

A woman with dark hair styled in a bun, wearing a pink and green patterned Indian outfit (kurti and shawl). She is sitting and looking directly at the camera. The background is a textured, light-colored wall.

Om Lex[®]

REFINING ETHNICITY

TAARA

Om Lex
REVOLUTION IN FASHION



D.NO.621



D.NO.622



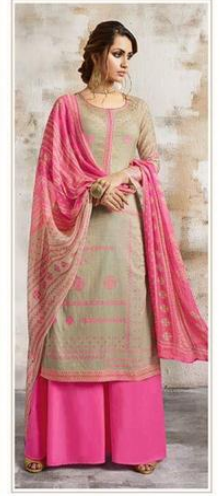
D.NO.623



D.NO.624



D.NO.625



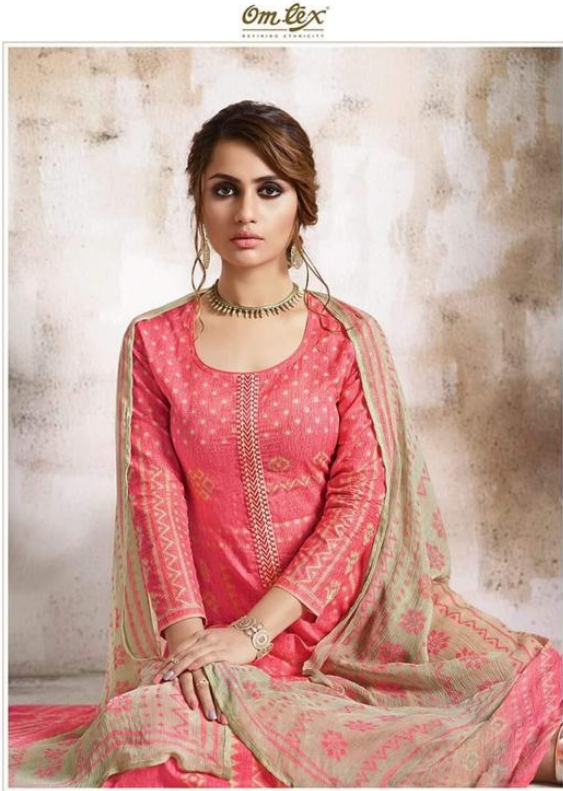
D.NO.626



Om Lex
WASHING INSTRUCTIONS



D.NO.624



Om Lex
DESIGNER FASHION

D.NO.622

Om Lex
DESIGNING CREATIVITY



D.NO.623





Om Lex
REVIVING TRADITION



D.NO.621





LAWN COTTON DIGITAL PRINT WITH WORK

D.NO	PRODUCT NAME	RATE
621	TAARA	1495/-
622	TAARA	1495/-
623	TAARA	1495/-
624	TAARA	1495/-
625	TAARA	1495/-
626	TAARA	1495/-

TOTAL Pcs.: 06

TOTAL AMT: 8970/-

TOP: LAWN COTTON

BOTTOM: HEAVY LAWN COTTON

DUP.: BEMBERG CHIFFON

www.omttx.in

Om Lex
DESIGNER CLOTHING



D.NO.625





PRODUCT NAME

TAARA

**DESIGN
NO.**

621 TO 626

**LAWN COTTON DIGITAL PRINT
WITH WORK**

TOP:

LAWN COTTON

BOTTOM:

HEAVY LAWN COTTON

DUPATTA:

BEMBERG CHIFFON

Om Lex[®]

REFINING ETHNICITY

www.omtex.in



Om Lex
REVOLUTION IN FASHION

D.NO.624

A woman with dark hair styled in a bun, wearing a pink and green patterned Indian outfit (kurti and dupatta). She is sitting and looking directly at the camera. The background is a textured, light-colored wall. The brand name 'Om Lex' is written in red cursive script in the upper right, with 'REFINING ETHNICITY' in small black capital letters below it. The word 'TAARA' is written in large red capital letters below the brand name. The woman is wearing a gold necklace, earrings, and a watch.

Om Lex[®]

REFINING ETHNICITY

TAARA



Om Lex
DESIGNING QUALITY

A woman with dark hair styled in a bun, wearing a pink and green patterned Indian outfit (kurti and dupatta). She is sitting against a textured, light-colored wall. The outfit features intricate geometric and floral patterns. She is also wearing a gold necklace, earrings, and a watch.

Om Lex[®]

REFINING ETHNICITY

TAARA

Om Lex
REVIVING TRADITIONS



D.NO.623



