

A woman with long, wavy brown hair is the central figure, looking down and to her right. She is wearing a vibrant red, long-sleeved tunic with intricate gold and green floral embroidery. A green shawl with gold floral patterns is draped over her left shoulder. She is also wearing a gold necklace. The background features a room with a lamp, a plant, and patterned curtains.

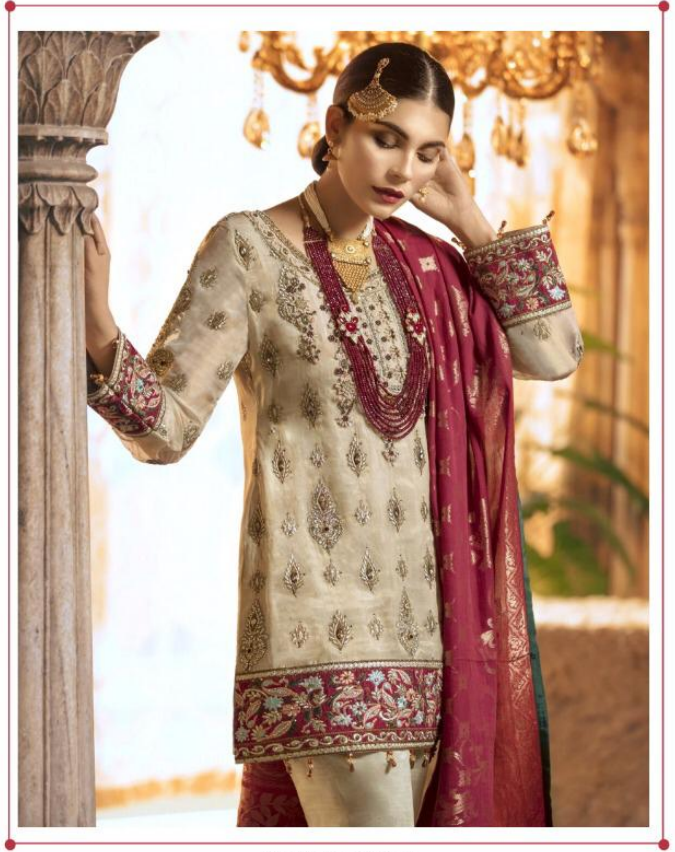
FEPIC®

ROSEMEEN

signature



D.NO.36003



D.NO.36006

A woman with long, wavy brown hair is the central figure, looking down and to her right. She is wearing a vibrant red, long-sleeved tunic with intricate gold and green floral embroidery. A green shawl with gold floral patterns is draped over her left shoulder. She is also wearing a gold necklace. The background features a room with a lamp, a plant, and patterned curtains.

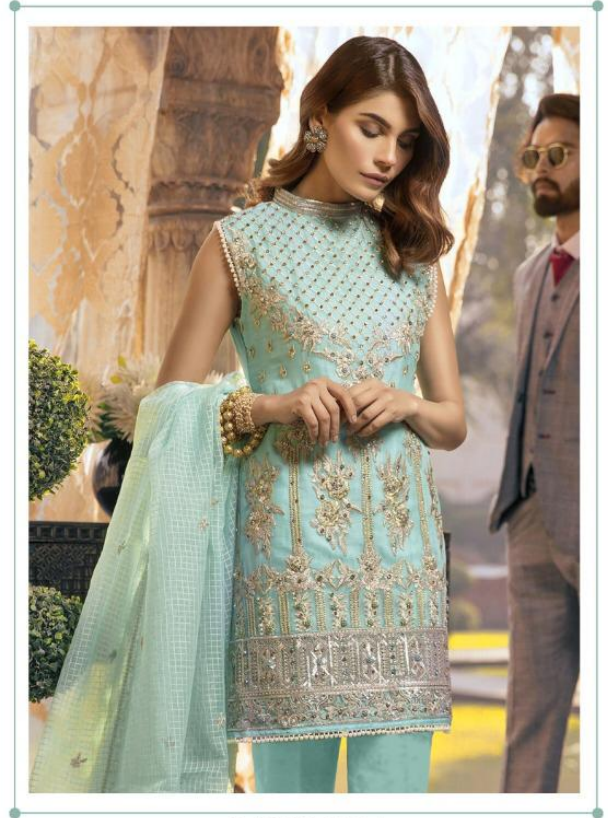
FEPIC®

ROSEMEEN

signature



D.NO.36005



D.NO.36004





Fepic[®]

ROSEMEEN

signature



D.NO.36002



D.NO.36001



D.NO.36001



D.NO.36002



D.NO.36003



D.NO.36004



D.NO.36005



D.NO.36006





Fepic[®]
ROSEMEEN
signature

Fepic®

ROSEMEEN

signature

 :_Fepic

 :Fb.com/Fepic11



D.NO	TOP	BOTTOM	INNER	DUPATTA
36001	FAUX GEORGETTE	SANTOON	SANTOON	NET WITH HEAVY EMBROIDERY
36002	HEAVY NET	SANTOON	SANTOON	PURE ORGANZA SILK
36003	FAUX GEORGETTE	SANTOON	SANTOON	NET WITH HEAVY EMBROIDERY
36004	FAUX GEORGETTE	SANTOON	SANTOON	KOTA CHECKS
36005	FAUX GEORGETTE	SANTOON	SANTOON	NET WITH HEAVY EMBROIDERY
36006	PURE ORGANZA SILK	SANTOON	SANTOON	HEAVY JAQUARD

Fepic[®]

ROSEMEEN
signature

 :_Fepic

 :Fb.com/Fepic11

A woman with long, wavy brown hair is the central figure, looking down and to her right. She is wearing a vibrant red, long-sleeved tunic with intricate gold and green floral embroidery. A green shawl with gold floral patterns is draped over her left shoulder. She is also wearing a gold necklace. The background features a room with a lamp, a plant, and patterned curtains.

FEPIC®

ROSEMEEN

signature