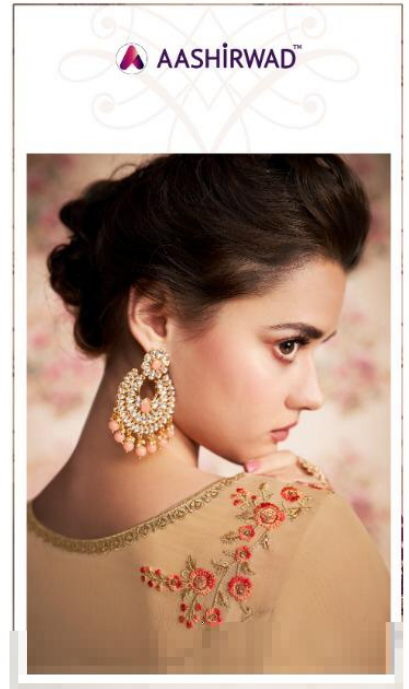


A woman is the central figure, wearing a long, flowing pink gown with intricate gold embroidery on the bodice and sleeves. The gown has a high slit revealing a gold-embroidered leg. She is posed with one hand near her face. The background is a wall with a repeating floral pattern of pink and red flowers. The overall aesthetic is elegant and formal.

 AASHIRWAD™

Siona

*A Product of Aashirwad creation*



AASHIRWAD™







8176

A woman with dark hair styled up is wearing a long, flowing pink gown with intricate gold embroidery on the bodice and sleeves. She is posing with one hand near her face. The background is a wall with a repeating floral pattern of pink and red flowers. The overall aesthetic is elegant and formal.

 AASHIRWAD™

Siona

*A Product of Aashirwad creation*









AASHIRWAD™







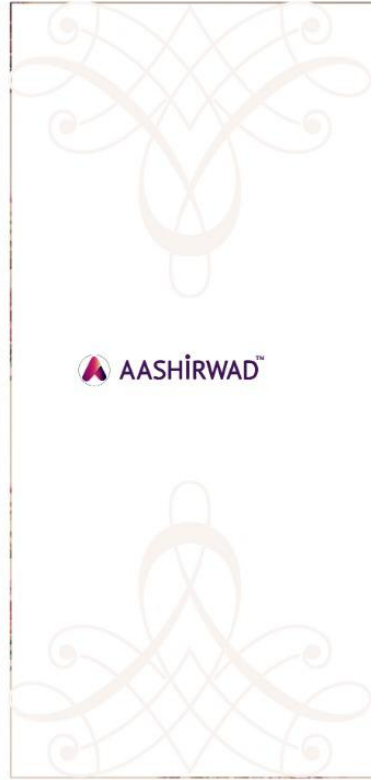
 AASHIRWAD™





8179









8175



8176



8179



8180



8177



8178

 AASHIRWAD™





AASHIRWAD™



8180



AASHIRWAD™

Siona



AASHIRWAD™



8175

