

Sampann<sup>nx</sup>

*Our greatest  
is not in never  
but in rising  
again*

S

THE  
ROYAL  
STORY

A

G



A

*Our greatest glori  
is not in never  
but in rising  
again*

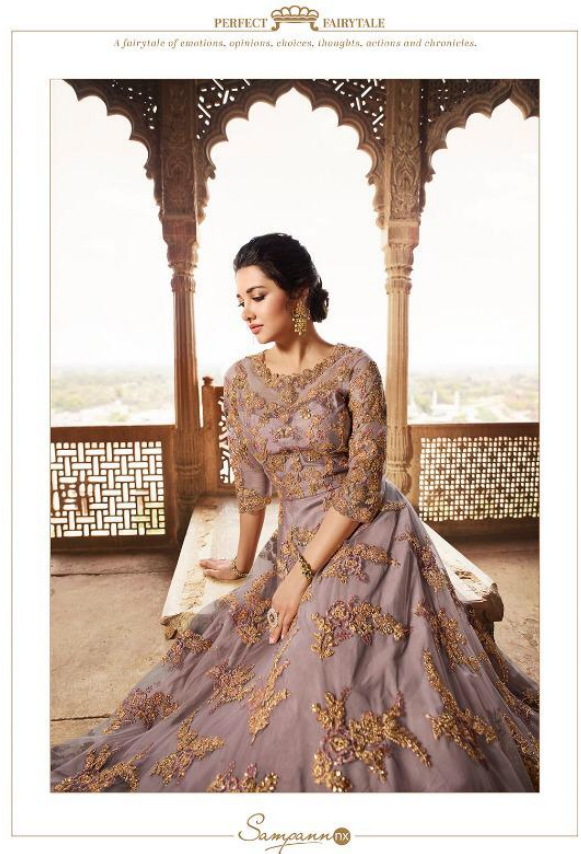


VOL.3











Sampann<sup>nx</sup>

*Our greatest  
is not in never  
but in rising  
time we*

S

THE  
ROYAL  
STORY

A G



A

*Our greatest glori  
is not in never  
but in rising  
time we*



VOL.3





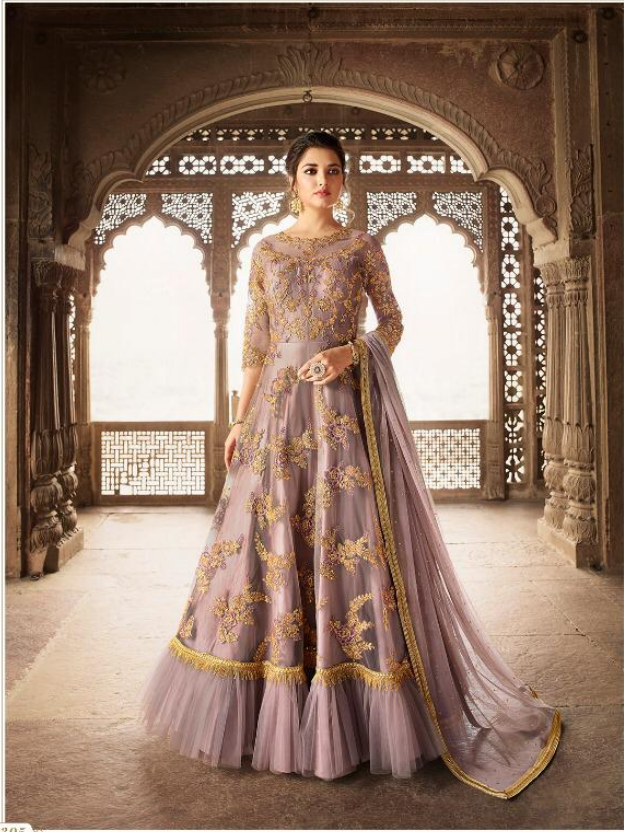
PERFECT FAIRYTALE  
*A fairytale of emotions, opinions, choices, thoughts, actions and chronicles.*

5305

Sangam



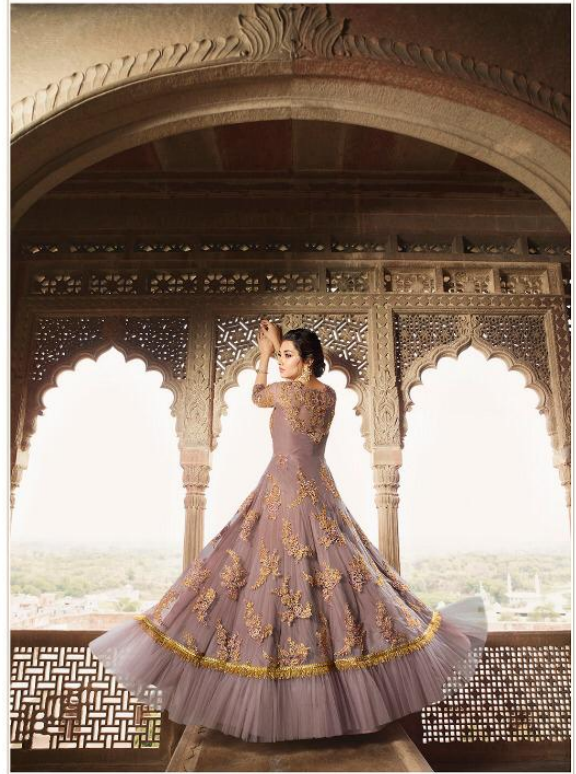




5305

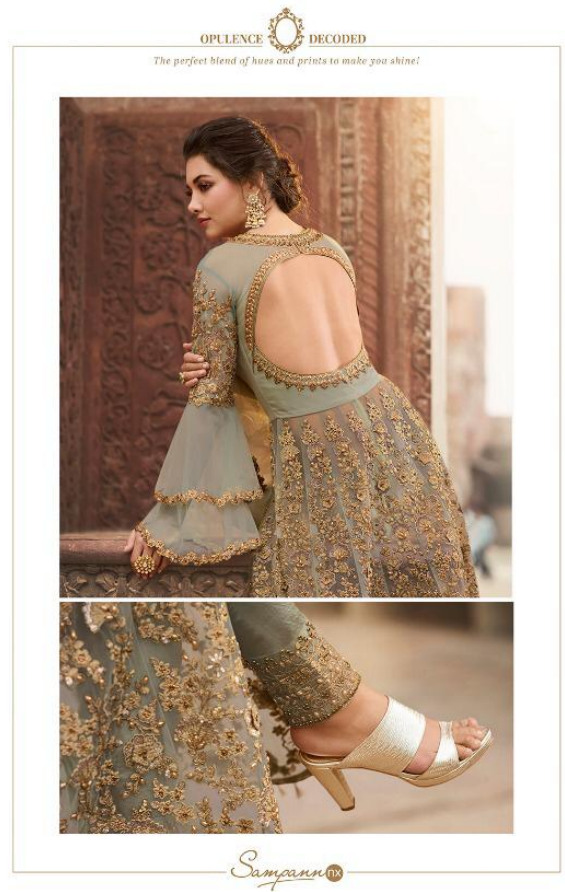
PERFECT FAIRYTALE

A fairytale of emotions, opulence, choices, thoughts, actions and chronicles.

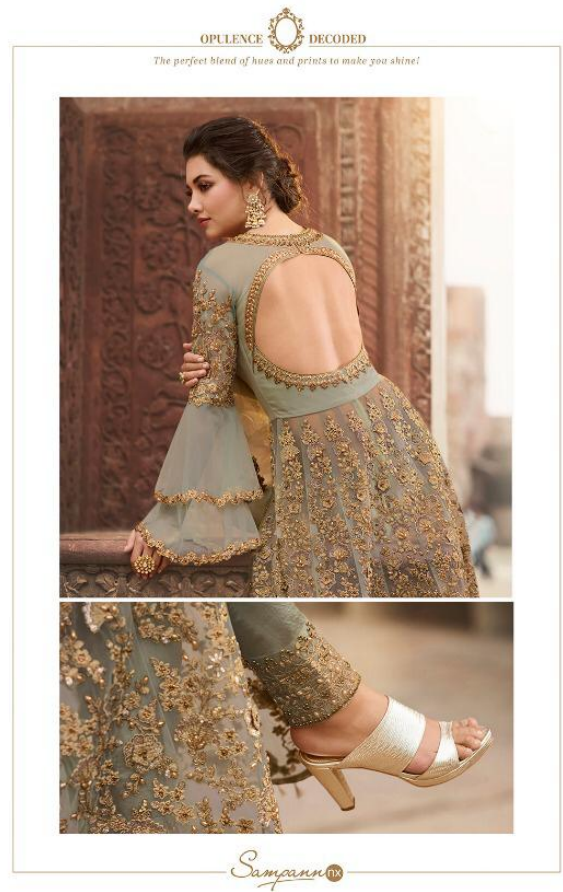


Sampann

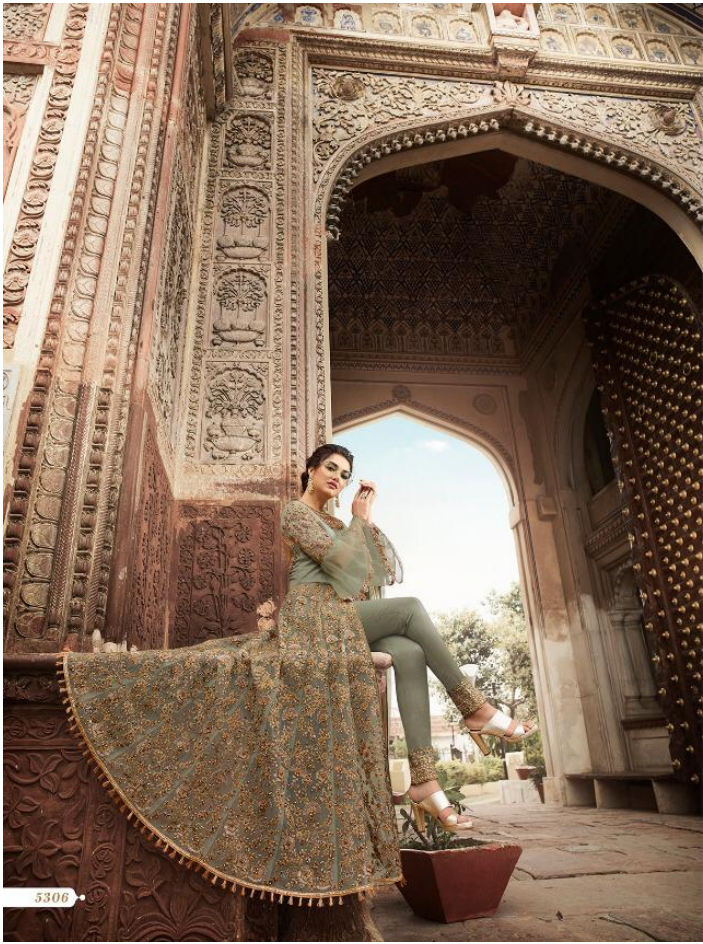






















IMMENSE  ROYALTY

*Feel like you've stepped straight into a regal empire!*



*Sangam* 

5307 







5301



5302



5303



5304



5305



5306



5307



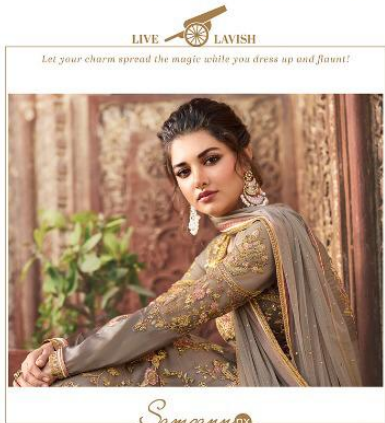
5308



## SAGA

D.NO	DETAILS	PRICE
5301	THIS SET FEATURES A FABULOUS PEACH & MAROON PARTY WEAR ANARKALI SUIT IN TAFETTA BASE EMBROIDERED WITH CODING, THREAD ,JARI, BADLA, SPARKLE, SEQUINS AND STONE EMBELLISHMENT .IT IS PAIRED WITH MAROON LEHENGA AND SOFT NET DUPATTA AND IT IS HEAVILY ENHANCED BY STONE EMBELLISHMENT.HIGHLIGHT OF THIS DRESS IS CUT WORK DONE ON KALI AND BEAUTIFUL BELT IS ATTACHED ON WAIST.	2695/-
5302	THIS SET FEATURES A GRACEFUL SEA BLUE ANARKALI IN BEAUTIFUL NET BASE EMBROIDERED WITH CODING ,THREAD ,JARI, BADLA AND SPARKLE SEQUINS AND STONE WORK. IT IS PAIRED WITH BANGALORI( LEHENGA AND PANT).PANT IS ENHANCED BY BEAUTIFUL EMBROIDERY WITH SOFT ROUND NET DUPATTA WHICH IS HEAVILY ENHANCED BY STONE WORK. HIGHLIGHT OF THIS DRESS IS FRILL LACE ATTACHED ON SLEEVES.	3175/-
5303	FEATURING THIS AMAZING GREY ANARKALI IN TAFETTA BASE DONE WITH CHAIN STITCH EMBROIDERY IN THREAD ,BADLA, SEQUINS AND STONE EMBELLISHMENT. IT IS PAIRED WITH BANGALORI SILK LEHENGA AND TAFETTA PANT. BEAUTIFUL EMBROIDERED BORDER IS ATTACHED ON PANT AND SOFT NET DUPATTA IS HEAVILY ENHANCED WITH STONE WORK.	3525/-
5304	FEATURING THIS PRETTY PEACH GOWN IN ROUND NET WITH LIGHT GREEN SATIN INNER. EMBROIDERY WORK IS COMPLETED WITH CODING ,THREAD, BADLA AND SPARKLE SEQUINS AND STONE EMBELLISHMENT. IT IS PAIRED WITH SOFT NET DUPATTA WHICH IS HEAVILY ENHANCED WITH STONE EMBELLISHMENT AND SANTOON BOTTOM.	2595/-
5305	FEATURING THIS GORGEOUS DUSTY MAUVE IN ROUND NET BASE EMBROIDERED WITH CODING THREAD, JARI, BADLA, SPARKLE SEQUINS AND STONE EMBELLISHMENT. IT IS PAIRED WITH SOFT NET DUPATTA WHICH IS HEAVILY ENHANCED WITH STONE EMBELLISHMENT AND SANTOON BOTTOM.	2995/-
5306	GLAMOROUS PISTA GREEN PARTY WEAR ANARKALI SUIT IN ROUND NET EMBROIDERED WITH CODING, THREAD, JARI, BADLA, SPARKLE SEQUINS AND STONE EMBELLISHMENTS. IT IS PAIRED WITH BANGLORI (LEHENGA AND PANT) PANT IS ENHANCED BY BEAUTIFUL EMBROIDERED BORDER AND SOFT ROUND NET DUPATTA WHICH IS HEAVILY ENHANCED WITH STONE EMBELLISHMENT.	3625/-
5307	FEATURING THIS STUNNING DARK BEIGE ANARKALI SUIT IN ROUND NET EMBROIDERD WITH CODING, THREAD, JARI AND SEQUINS. IT IS PAIRED WITH BANGLORI LEHENGA AND PANTS. EMBROIDERED BORDER IS ATTACHED ON PANTS. IT ALSO COMES ALONG WITH SOFT ROUND NET DUPATTA WHICH IS HEAVILY ENHANCED WITH STONE WORK.	3625/-
5308	RAVISHING GREY PARTY WEAR SHARARA STYLE SUIT WHICH WILL GIVE YOU A DIVA LOOK FEATURES AN EMBROIDERED ROUND NET KAMEEZ WITH EMBROIDERED SATIN SHARARA AND DUSTY PINK BANGLORI LEHENGA. AND THIS BEAUTIFUL DRESS COMES WITH SOFT ROUND NET DUPATTA WHICH IS HEAVILY ENHANCED WITH STONE WORK. EMBROIDERY IS COMPLETED WITH CODING, THREAD, JARI, BADLA SPARKLE SEQUINS AND STONE EMBELLISHMENTS.	2935/-
	<b>AVERAGE PRICE PER PCS = 3146/-</b>	<b>25170/-</b>
<b>GST CHARGES EXTRA</b>		





LIVE  LAVIS

Let your charm spread the magic while you dress up and flaunt!

5308

Sampann





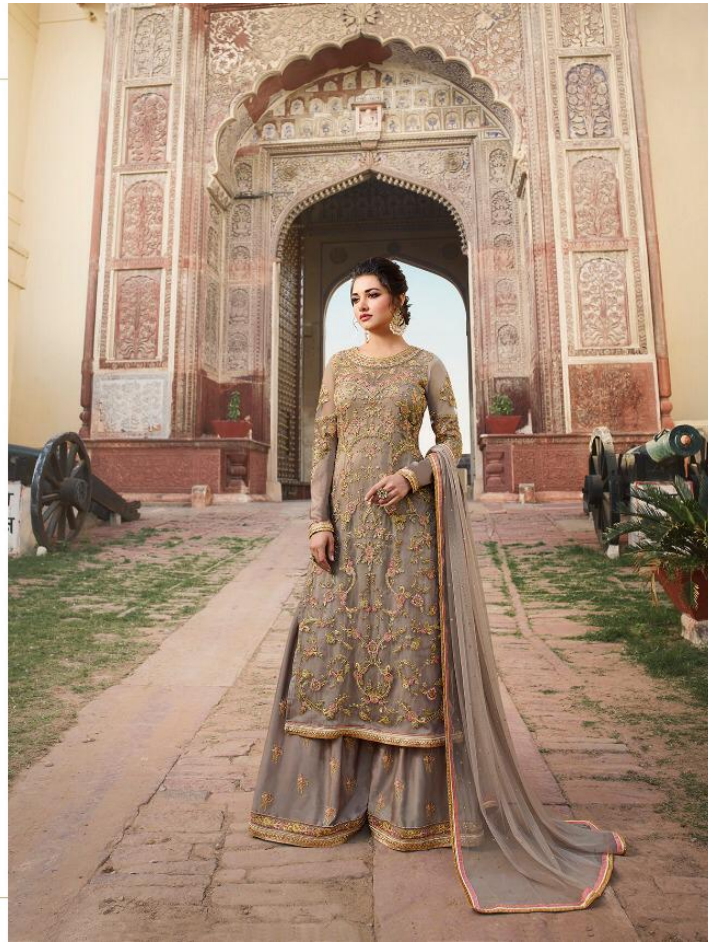


LIVE  LAVISH

Let your charm spread the magic while you dress up and flaunt!

5308

Sangam





Sampann<sup>nx</sup>

*Our greatest  
is not in never  
but in rising  
again*

S

THE  
ROYAL  
STORY

A

G



A

*Our greatest glori  
is not in never  
but in rising  
again*



VOL.3





# REIMAGINING • CELEBRATIONS

*The philosophy this season puts the spotlight on how we envision festive dressing. Presenting the collection, which perfectly matches both factors—comfort and style that today's women aspire for her dream celebration wear.*



















5302

Sampurna





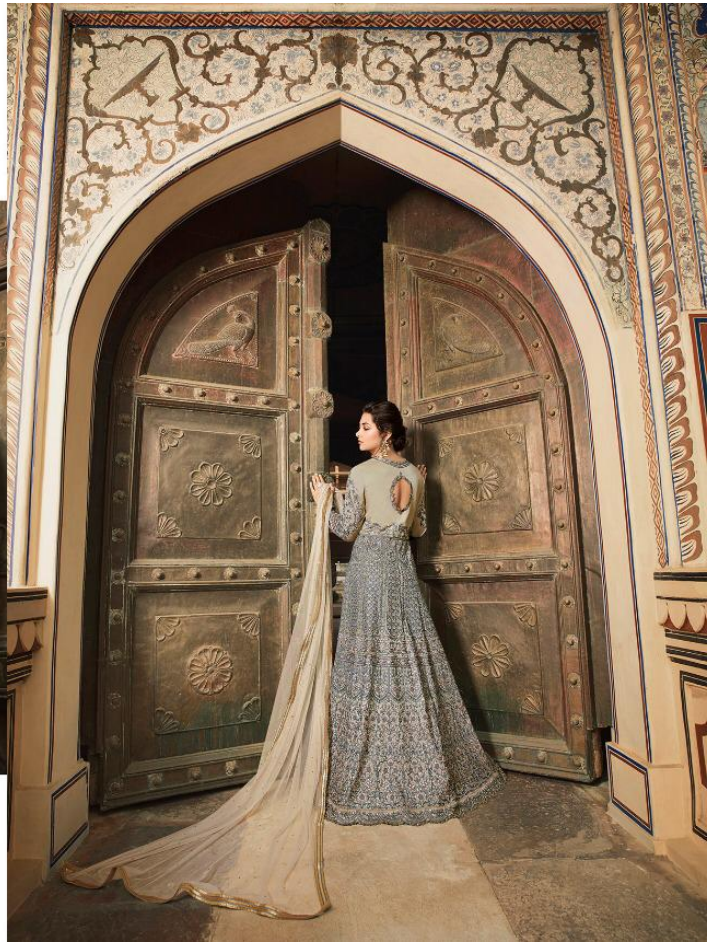
MESMERIZING BLISS

An expression of true luxury inspired by the Regals and colours that are truly bridal.

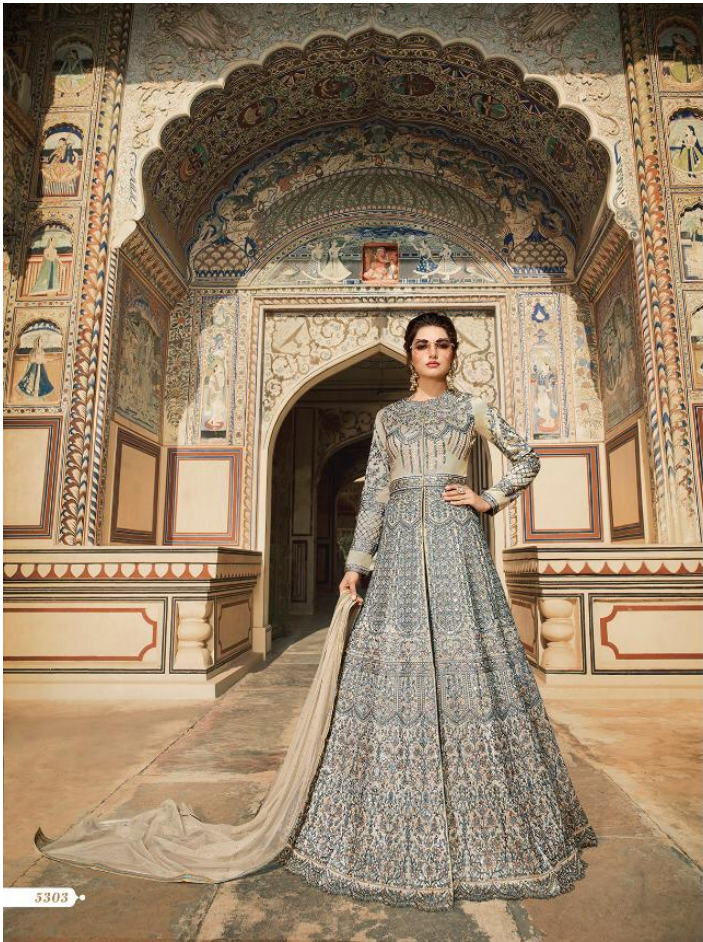


Sampann

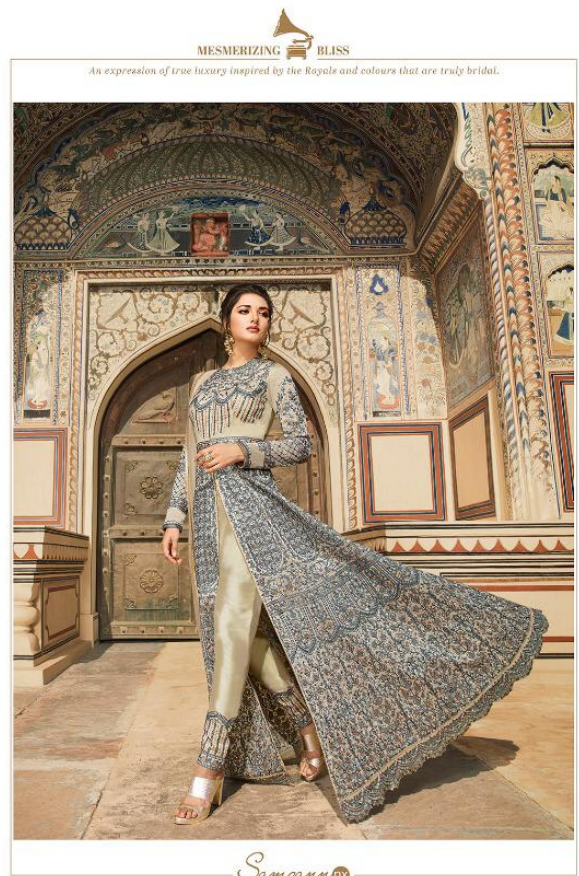
5303







5303



MESMERIZING BLISS

An expression of true luxury inspired by the royals and colours that are truly bridal.

Sampann





*What actually makes you graceful is  
how amazingly you style your look.*

5304

*Sangam* 





