

MAHIKA
By
zubeda[®]
essence to be seen

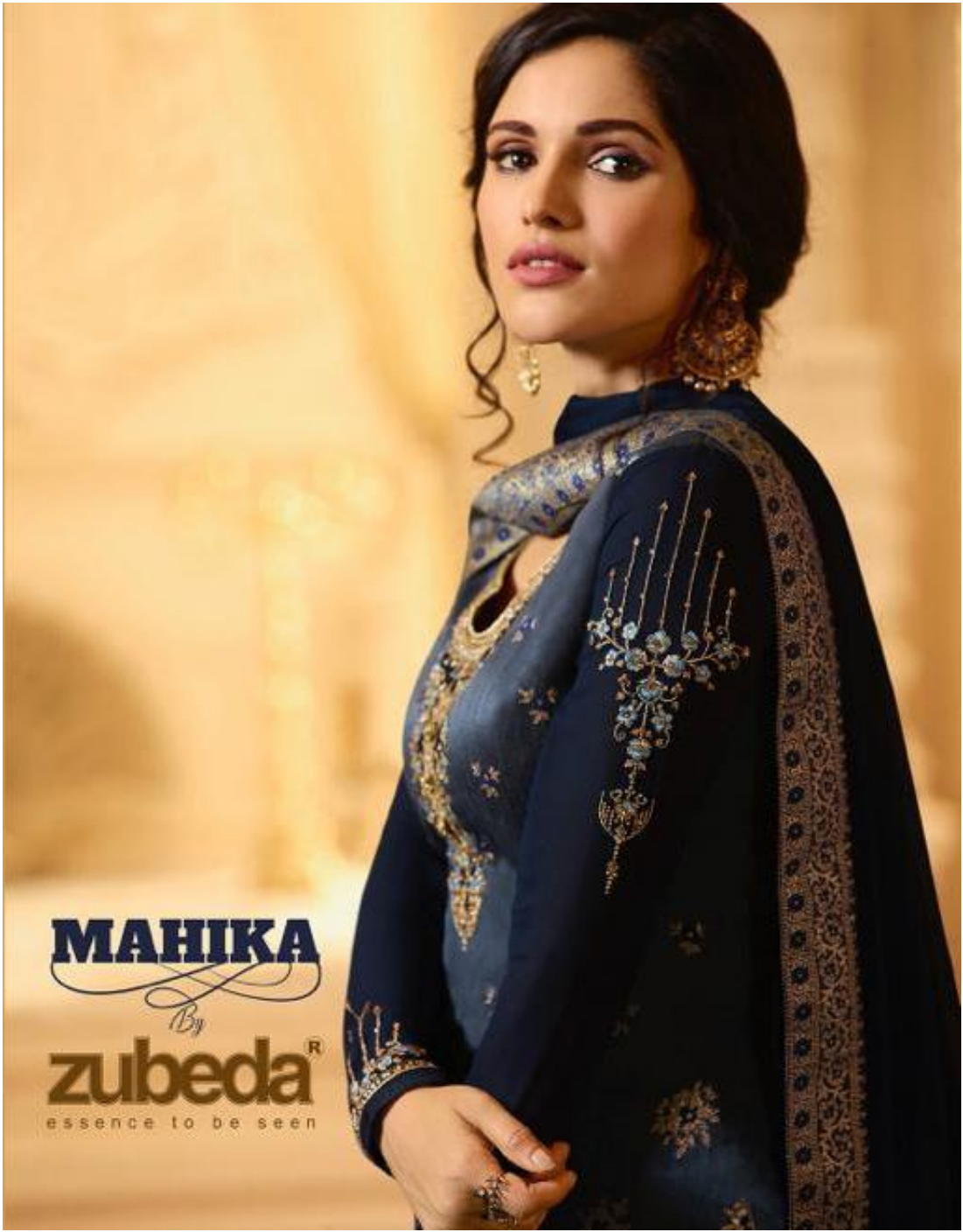


zubeda

"Stunning Embellishments"



zubeda
"Stunning Embellishments"
16304



MAHIKA
By
zubeda[®]
essence to be seen



zubeda

"Stunning Embellishments"

16305

MAHIKA



▲ 16301 ▲



▲ 16302 ▲



▲ 16303 ▲



▲ 16304 ▲



▲ 16305 ▲



▲ 16306 ▲

zubeda[®]
essence to be seen

© Zubeda & Co. 2019



"Stunning Embellishments"

The dress is embellished with intricate floral embroidery in gold and silver, creating a stunning and elegant look. The dress is made of a soft, flowing fabric, perfect for a special occasion.

zubeda®
DESIGNED IN BANGALORE



▲ 16306 ▲





- Decorative floral motif
- Decorative floral motif
- Decorative floral motif
- Decorative floral motif
- Decorative floral motif
- Decorative floral motif

zubeda

"Stunning Embellishments"



It's not a coincidence
it's a matter of style.
A well-chosen outfit
can make a woman's
appearance a work of art.
and it's never too late.

▲ 16306 ▲



zubeda

"Stunning Embellishments"

The finest combination of fabric, color and embroidery, creating a look that is truly stunning.

▲ 16905 ▲



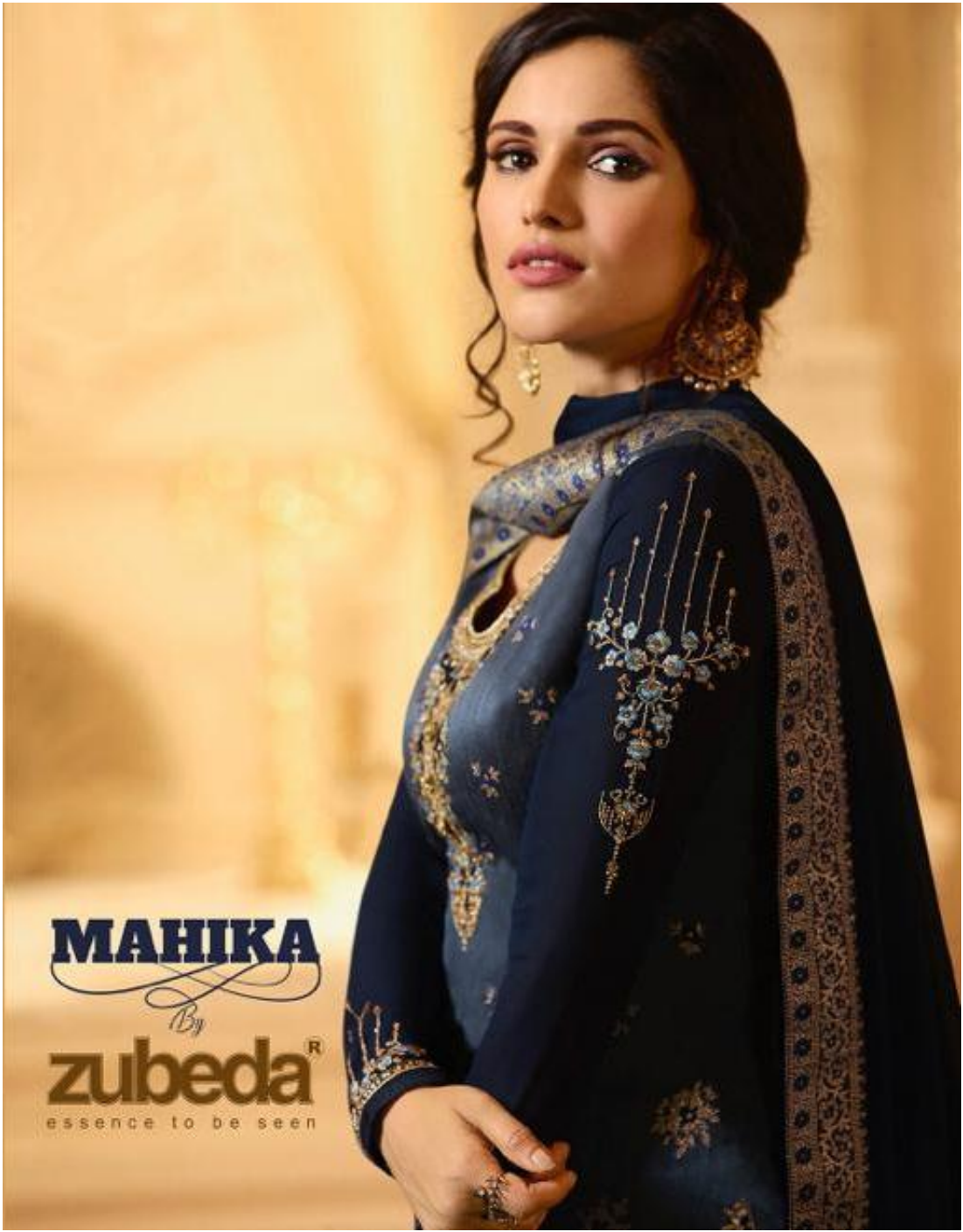
ROSHNI INTERNATIONAL PVT. LTD.

zubeda[®]

MAHIKA

Rate List of Catalogue

<i>D.no.</i>	<i>Description</i>	<i>Rate (Per Pcs.)</i>
16301	<i>Top-Pure Banarasi Jacquard with Emb.work Dupatta-Crystal Crape Gorgette with Banarasi Border Inner & Bottom Santoon</i>	1465/-
16302	<i>Top-Pure Banarasi Jacquard with Emb.work Dupatta-Crystal Crape Gorgette with Banarasi Border Inner & Bottom Santoon</i>	1465/-
16303	<i>Top-Pure Banarasi Jacquard with Emb.work Dupatta-Crystal Crape Gorgette with Banarasi Border Inner & Bottom Santoon</i>	1465/-
16304	<i>Top-Pure Banarasi Jacquard with Emb.work Dupatta-Crystal Crape Gorgette with Banarasi Border Inner & Bottom Santoon</i>	1465/-
16305	<i>Top-Pure Banarasi Jacquard with Emb.work Dupatta-Crystal Crape Gorgette with Banarasi Border Inner & Bottom Santoon</i>	1465/-
16306	<i>Top-Pure Banarasi Jacquard with Emb.work Dupatta-Crystal Crape Gorgette with Banarasi Border Inner & Bottom Santoon</i>	1465/-



MAHIKA
By
zubeda[®]
essence to be seen



zubeda

"Stunning Embellishments"

We've designed a look that's perfect for the festive season. Embellishments and intricate details give it a truly royal feel.

▲ 16903 ▲





zubeda®
DESIGNED TO BE GREAT

"Stunning
Embellishment"

100% Acacia fabric with
a subtle sheen
and a soft touch.
Available in black, navy blue,
and gold. Size 36-42.
▲ 16502 ▲





zubeda[®]
DESIGNER FASHION

"Stunning
Embellishments"

▲ 15904 ▲

