



LF

Lavli

VOL. II

HEAVY DUPATTA

A woman with long dark hair is shown from the chest up, wearing a vibrant green dupatta with intricate floral embroidery in red, gold, and green. She is looking down and smiling slightly. She wears large, ornate blue and gold earrings and a ring on her finger. The background is a softly lit room with white furniture.

LF

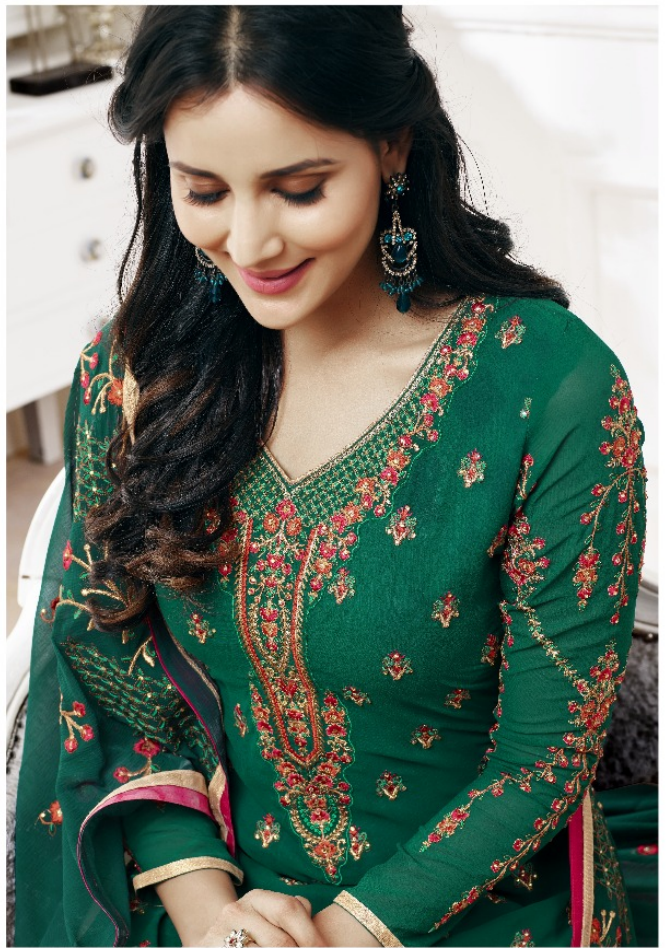
Lavli

VOL. II

HEAVY DUPATTA



D.NO. 11005



LF

Lavli

VOL. II





11001



11002



11003



11004



11005



11006

Lavli
VOL. II









D.NO. 11001

