

इत्योत्

I N A Y A



इत्प्रीट



1004

T I M E L E S S





1003



इत्योत्

G L A M O U R



इत्थोत्

1001



1002



1005



1006



1003



1004



1007



I N A Y A

इत्योत्

I N A Y A





इत्योत्

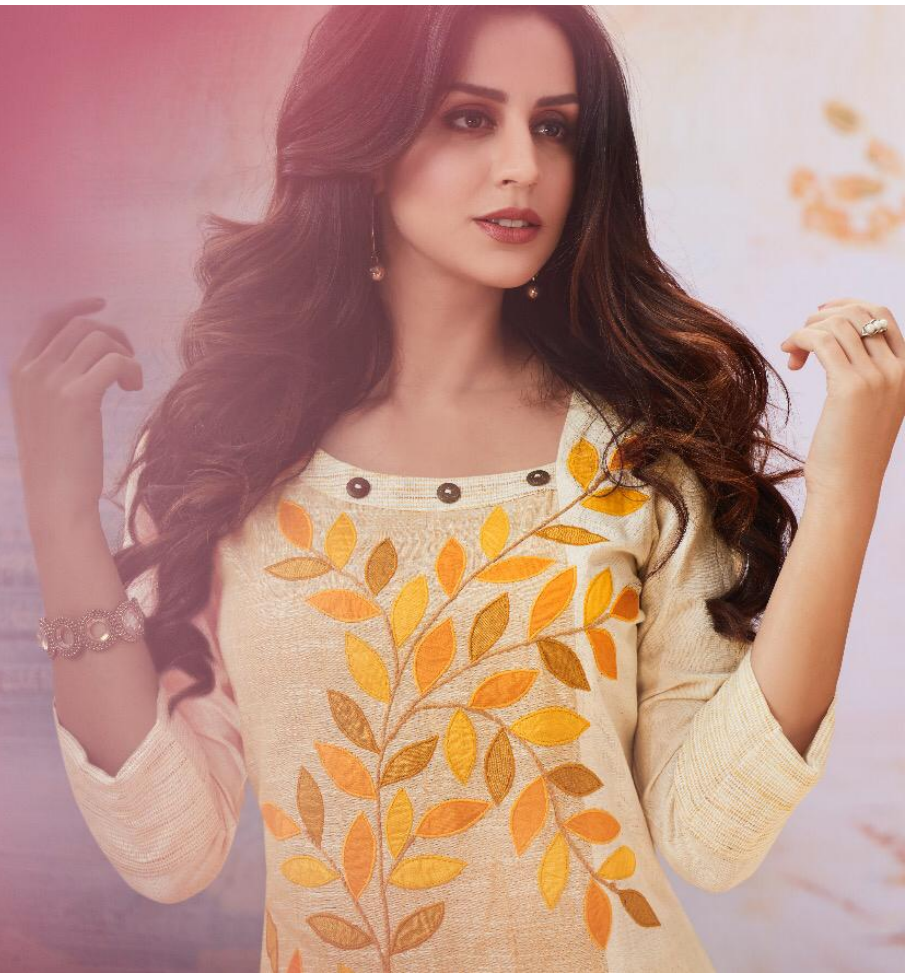
I N A Y A



I N A Y A



The key is to contrast two elements so you don't end up over doing the feminine quotient.



F L I G H T
- F O R -
F A N C Y



1002



C R E A T I N G



H E R I T A G E

इत्प्रीट



1001

इत्प्रीत

F A S H I O N



F O R W A R D

