

*BelliZa*<sup>®</sup>  
Designer Studio





*Belliza*<sup>®</sup>  
Designer Studio

113-004

A close-up photograph of the woman wearing the green and red patterned outfit, framed by a decorative border. The image shows the intricate details of the tunic and shawl. The tunic has a red border with a floral pattern and a central panel with a large, ornate floral design. The shawl is green with a red border and a floral pattern. The woman is wearing large, ornate earrings and a necklace. The background is a plain, light-colored wall.



*BelliZa*<sup>®</sup>  
Designer Studio



113-010



*BelliZa*<sup>®</sup>  
Designer Studio





*BelliZa*<sup>®</sup>  
Designer Studio



113-002





113-001

113-002

113-003



113-004

113-005

113-006



113-007

113-008

113-009



113-010

*BelliZa*<sup>®</sup>  
 Designer Studio  
**ZARINA**  
 100% Pure Cotton with Zari Work  
 And Cotton Dupatta with Foil



*Belliza*<sup>®</sup>  
Designer Studio



113-008



*BelliZa*<sup>®</sup>  
Designer Studio



113-007







*BelliZa*<sup>®</sup>  
Designer Studio

113-001

*BelliZa*<sup>®</sup>  
Designer Studio

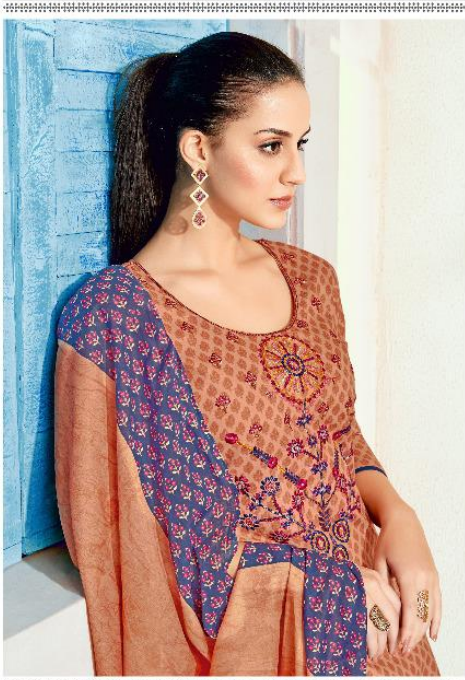


113-009





*Belliza*<sup>®</sup>  
Designer Studio



113-006



*Belliza*<sup>®</sup>  
Designer Studio



113-005





*BelliZa*<sup>®</sup>  
Designer Studio



113-003

