





Ganga

ASTER

◇◇◇ BEAUTY LIES IN THE EYES OF THE BEHOLDER



D.NO :- 7612



Ganga®



BEAUTY LIES IN THE EYES OF THE BEHOLDER



D.NO :- 7610





Ganga

ASTER

Ganga®



BEAUTY LIES IN THE EYES OF THE BEHOLDER

D.NO :- 7618





Ganga



BEAUTY LIES IN THE EYES OF THE BEHOLDER

D.NO.-7613



BEAUTY LIES IN THE EYES OF THE BEHOLDER

D.NO :- 7617



ASTER – DESIGNER SALWAR SUITS

DESIGN NO.	CATALOG NAME	DESCRIPTION	PRICE
7610	ASTER	Pure Bemberg Silk Digital Printed With Extra Sleeves With Embroidery and Hand Work and Sarvoski Work	1995/-
7611	ASTER	Pure Bemberg Silk Digital Printed With Extra Sleeves With Embroidery and Hand Work and Sarvoski Work	1995/-
7612	ASTER	Pure Bemberg Silk Digital Printed With Extra Sleeves With Embroidery and Hand Work and Sarvoski Work	1995/-
7613	ASTER	Pure Bemberg Silk Digital Printed With Extra Sleeves With Embroidery and Hand Work and Sarvoski Work	1995/-
7614	ASTER	Pure Bemberg Silk Digital Printed With Extra Sleeves With Embroidery and Hand Work and Sarvoski Work	1995/-
7615	ASTER	Pure Bemberg Silk Digital Printed With Extra Sleeves With Embroidery and Hand Work and Sarvoski Work	1995/-
7616	ASTER	Pure Bemberg Silk Digital Printed With Extra Sleeves With Embroidery and Hand Work and Sarvoski Work	1995/-
7617	ASTER	Pure Bemberg Silk Digital Printed With Extra Sleeves With Embroidery and Hand Work and Sarvoski Work	1995/-
7618	ASTER	Pure Bemberg Silk Digital Printed With Extra Sleeves With Embroidery and Hand Work and Sarvoski Work	1995/-

Total Pieces: 09

Total Amount: 17955 (+ gst extra)

Ganga®



BEAUTY LIES IN THE EYES OF THE BEHOLDER

D.NO :- 7611





Ganga



BEAUTY LIES IN THE EYES OF THE BEHOLDER

D.NO. - 7616



BEAUTY LIES IN THE EYES OF THE BEHOLDER

D.NO :- 7614



D.NO :- 7610



D.NO :- 7611



D.NO :- 7612



D.NO :- 7613



D.NO :- 7614



D.NO :- 7615

Ganga



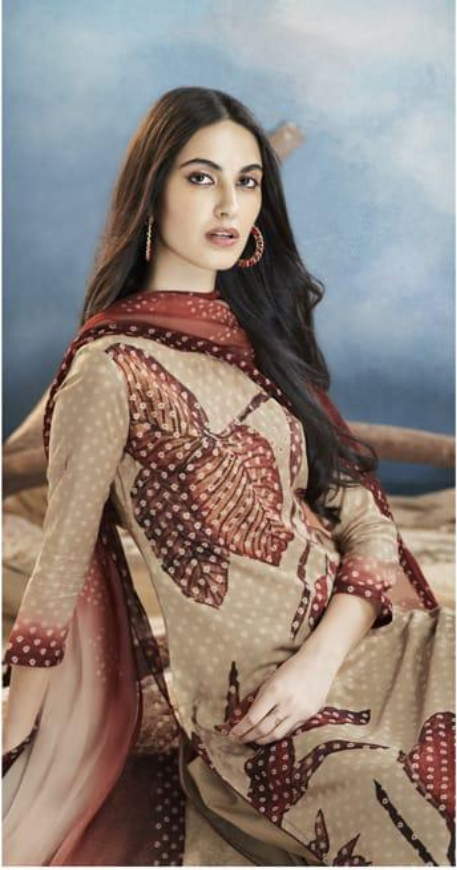
D.NO :- 7616



D.NO :- 7617



D.NO :- 7618



BEAUTY LIES IN THE EYES OF THE BEHOLDER

D.NO :- 7615



Ganga



Ganga

BEAUTY LIES IN THE EYES OF THE BEHOLDER

D.NO :- 7611