

VARSHA

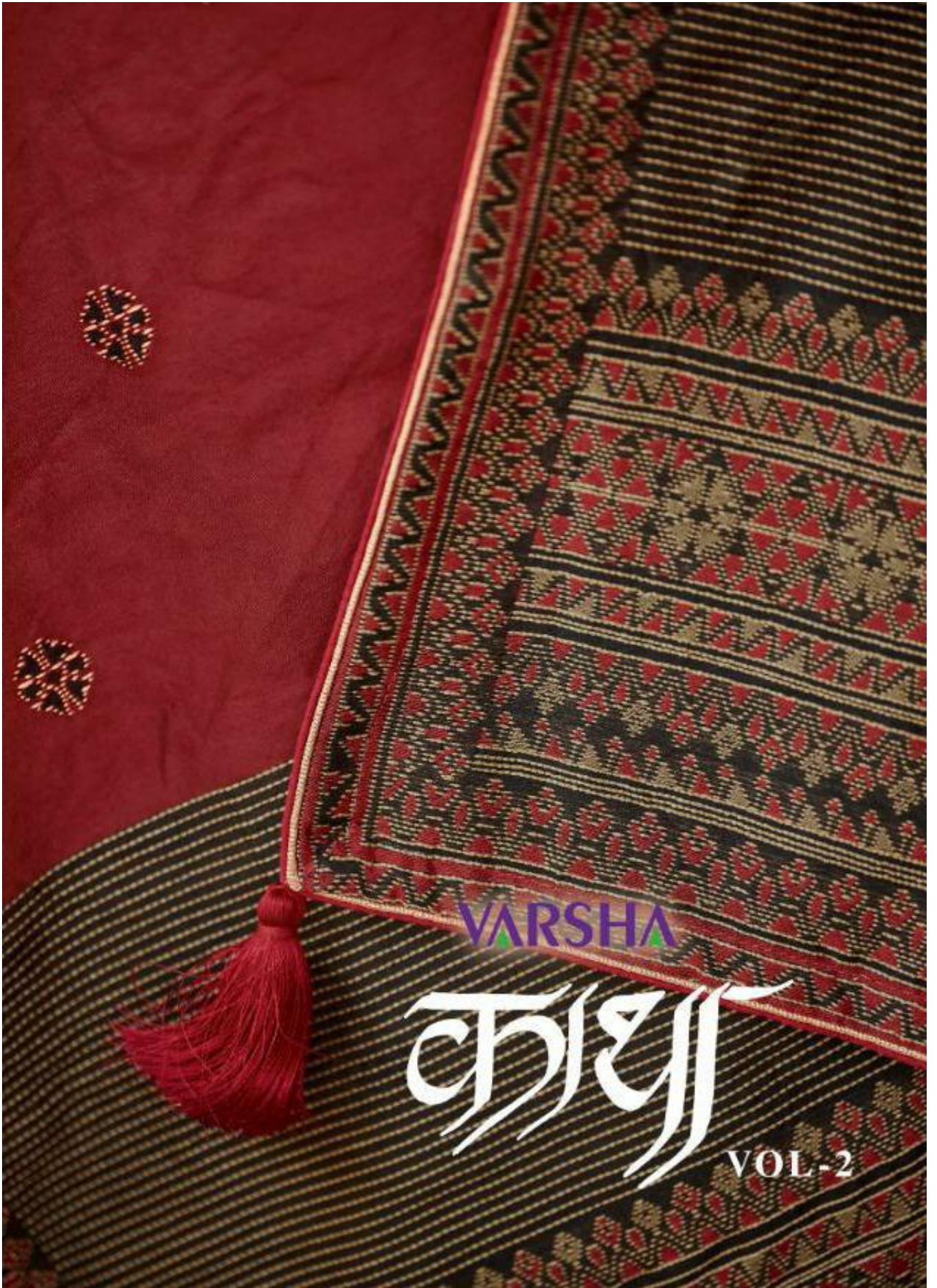
କାଶ୍ୟ

VOL-2

VARSHA



KT-27



VARSHA

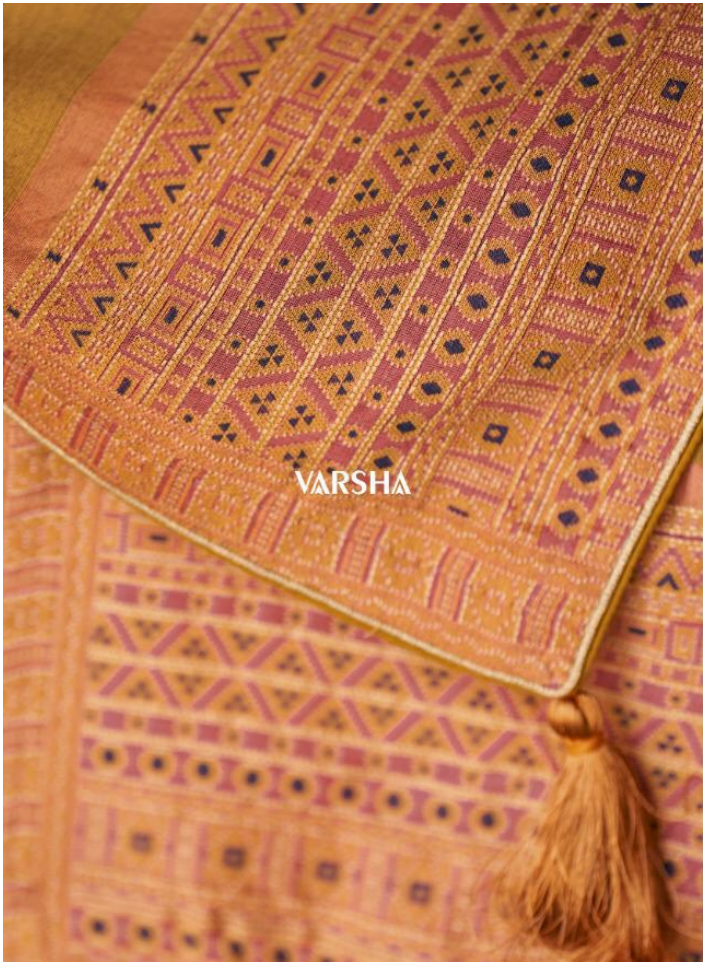
କାଶ୍ୟ

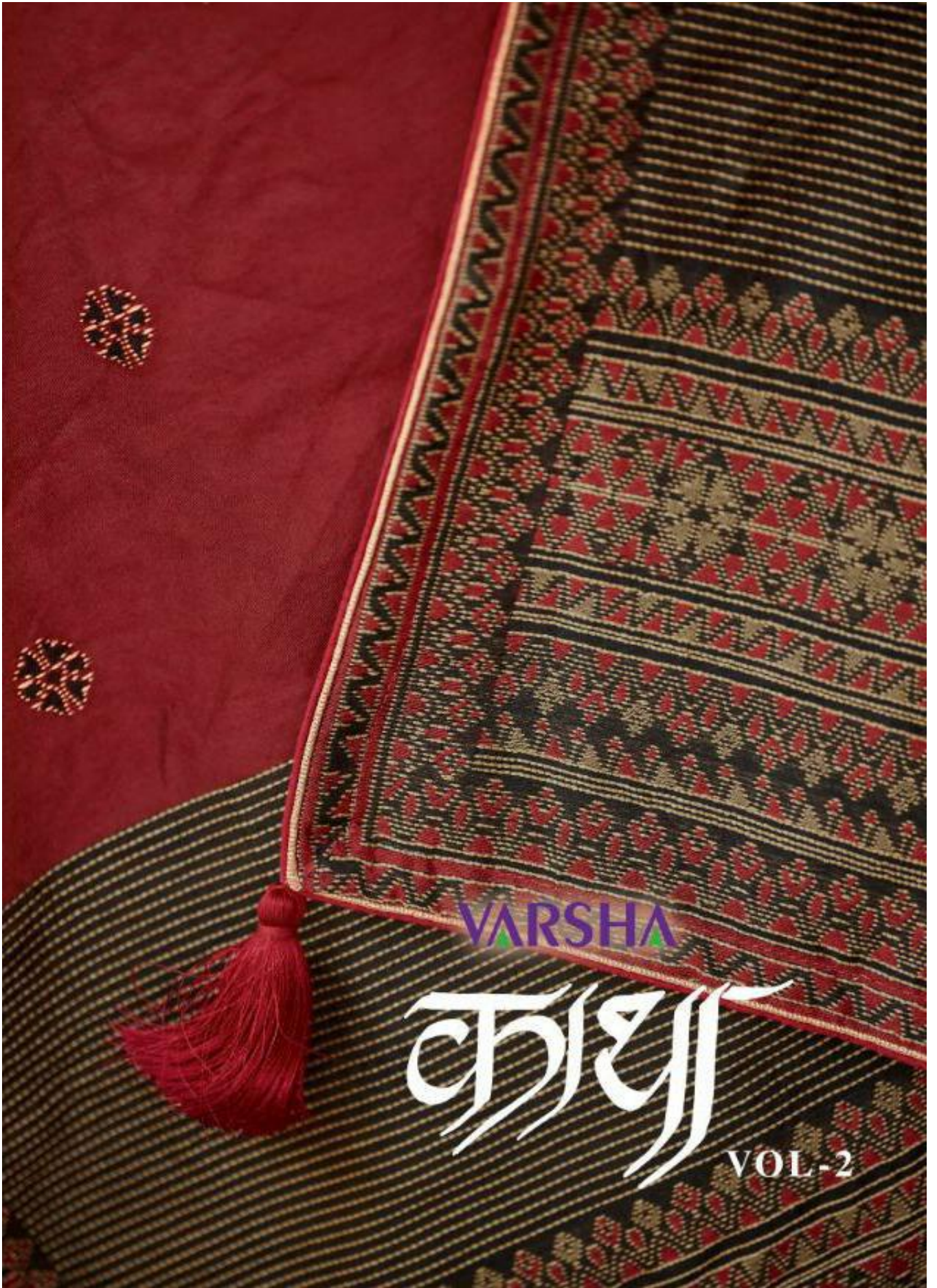
VOL-2

VARSHA



KT-23





VARSHA

कलश

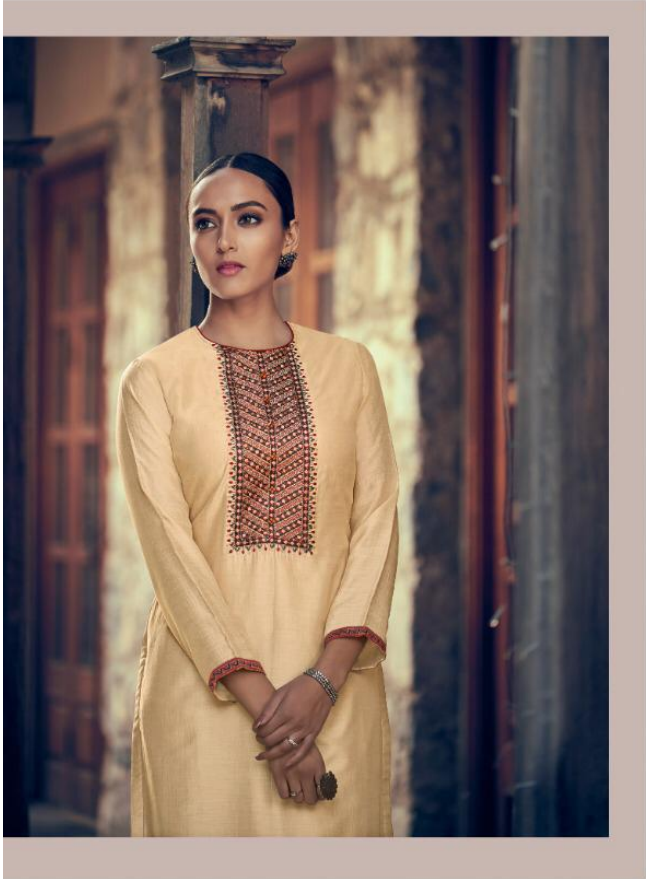
VOL.-2

VARSHA



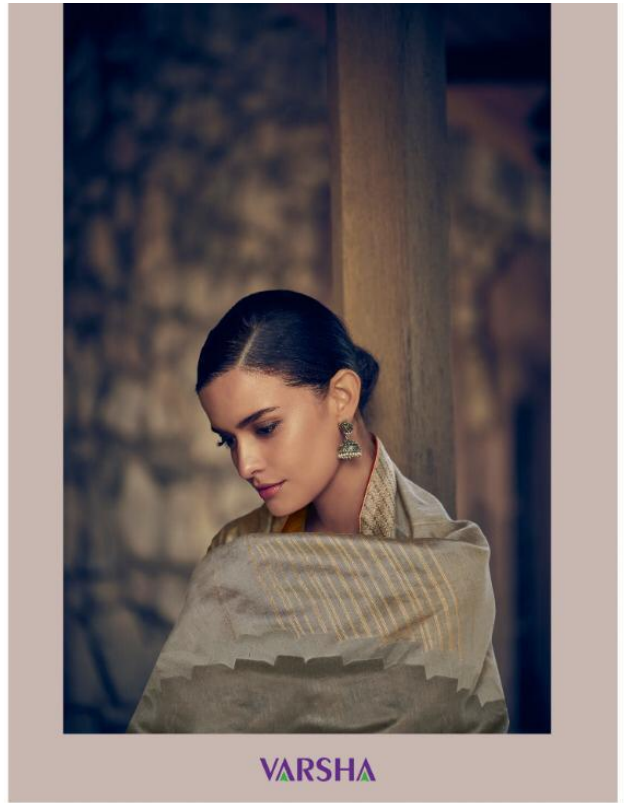
VARSHA





VARSHA





KT-25



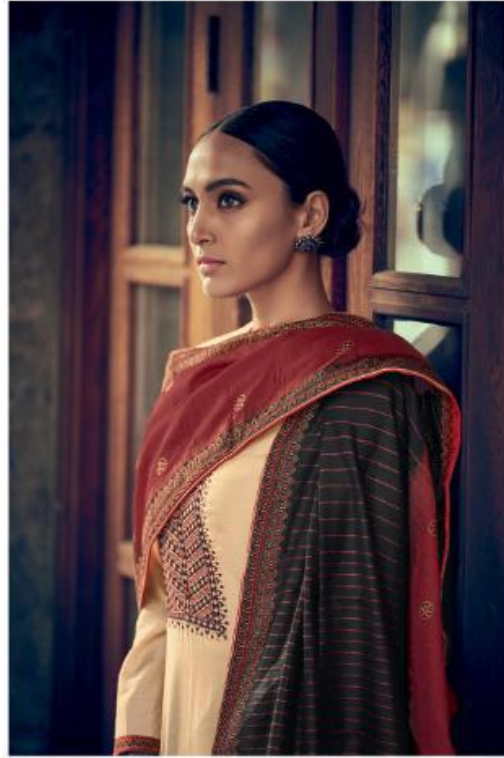
VARSHA



KT-26



PRESENTING TO YOU OUR NEW CATALOGUE



कथ
VOL-2

FROM VARSHA FASHIONS

DESIGN NO.	CATALOG NAME	DESCRIPTION	PRICE
KT-21	KATHAA-2	TOP : KORA SILK WITH EMBROIDERY & WEAVE STITCHING DETAILS BOTTOM : SUPERIOR COTTON SOLID DUPATTA : HANDWOVEN KATHA WEAVE	1680/-
KT-22	KATHAA-2	TOP : KORA SILK WITH EMBROIDERY & WEAVE STITCHING DETAILS BOTTOM : SUPERIOR COTTON SOLID DUPATTA : HANDWOVEN KATHA WEAVE	1680/-
KT-23	KATHAA-2	TOP : KORA SILK WITH EMBROIDERY & WEAVE STITCHING DETAILS BOTTOM : SUPERIOR COTTON SOLID DUPATTA : HANDWOVEN KATHA WEAVE	1680/-
KT-24	KATHAA-2	TOP : KORA SILK WITH EMBROIDERY & WEAVE STITCHING DETAILS BOTTOM : SUPERIOR COTTON SOLID DUPATTA : HANDWOVEN KATHA WEAVE	1680/-
KT-25	KATHAA-2	TOP : KORA SILK WITH EMBROIDERY & WEAVE STITCHING DETAILS BOTTOM : SUPERIOR COTTON SOLID DUPATTA : HANDWOVEN KATHA WEAVE	1680/-
KT-26	KATHAA-2	TOP : KORA SILK WITH EMBROIDERY & WEAVE STITCHING DETAILS BOTTOM : SUPERIOR COTTON SOLID DUPATTA : HANDWOVEN KATHA WEAVE	1680/-
KT-27	KATHAA-2	TOP : KORA SILK WITH EMBROIDERY & WEAVE STITCHING DETAILS BOTTOM : SUPERIOR COTTON SOLID DUPATTA : HANDWOVEN KATHA WEAVE	1680/-
Total Pieces: 7		Total Amount: 11,760 + GST	

VARSHA





VARSHA



KT-21

VARSHA



VARSHA



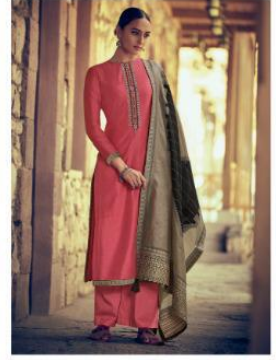
KT-21



KT-22



KT-25



KT-26



KT-23



KT-24



KT-27

VARSHA

