



MUZLIN
P R E M I U M

S



Silky grace Moving with silky grace, your elegance will be clear for all to behold and enjoy, celebrate your delicate side with the exquisite Indian voile collection



CODE.: 026





Cream and gold is a classically traditional color combo embellished with bright pops of embroidery. Perfect for warm summer festivities.

CODE.: 024





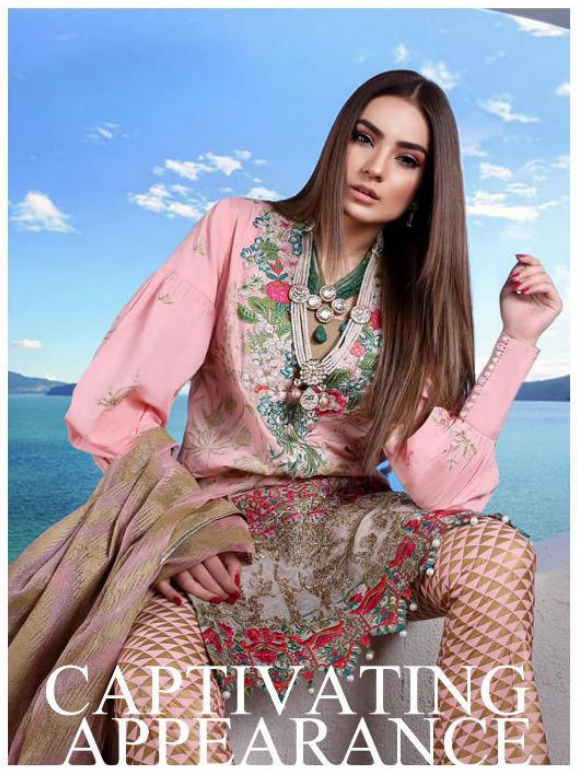
MUZLIN
PREMIUM



CHIC EASY PIECES

Add the lace borders as you wish to enhance your look.





CAPTIVATING APPEARANCE

did you ever go to fashion college? if you didnt, then let us enlighten you on what happens there

CODE.: 028





CODE.: 022





MUZLIN
P R E M I U M



CHIC EASY PIECES

Add The Luxe Border As You Wish To Enhance Your Look

CODE.: 027





THE
BEST
Of
COLOR

Make A deep red colour statement offset by cream and gold



CODE.: 023





DEEPSY
suits

presents our new catlounge

MUZLIN
PREMIUM

D.No	TOP	BOTTOM	DUPATTA
021	Pure cotton Gold print with heavy self embroidery	Semi Loan Gold print	Brasso print with extra pallu border lace
022	Pure cotton Gold print with heavy self embroidery	Semi Loan Gold print	Brasso print with extra pallu border lace
023	Pure cotton Gold print with heavy embroidery	Semi Loan Gold print	Chiffon print
024	Pure cotton Gold print with heavy embroidery	Semi Loan Gold print	Chiffon print
025	Pure cotton Gold print with heavy self embroidery & embroidery patches	Semi Loan Gold print	Brasso Gold print
026	Pure cotton Gold print with heavy self embroidery & embroidery patches	Semi Loan Gold print	Brasso Gold print
027	Pure cotton Gold print with heavy embroidery	Semi Loan Gold print	Chiffon print
028	Pure cotton Gold print with heavy embroidery	Semi Loan Gold print	Chiffon Gold print

RATE: 899+ GST EXTRA

LOOKING FORWARD FOR POSITIVE RESPONSE FROM YOU ALL.



ive into the DEEP

A rich red and gold color-blocked daman is offset by peach and sage embroidery with gold jaal sprinkled over the cream shirt. Add layered red ruffles for dramatic statement sleeves and head out the door feeling invincible.



**Bold
intentions**



CODE : 025



CODE.: 021



CODE.: 022



CODE.: 025



CODE.: 026



CODE.: 023



CODE.: 024



CODE.: 027



CODE.: 028