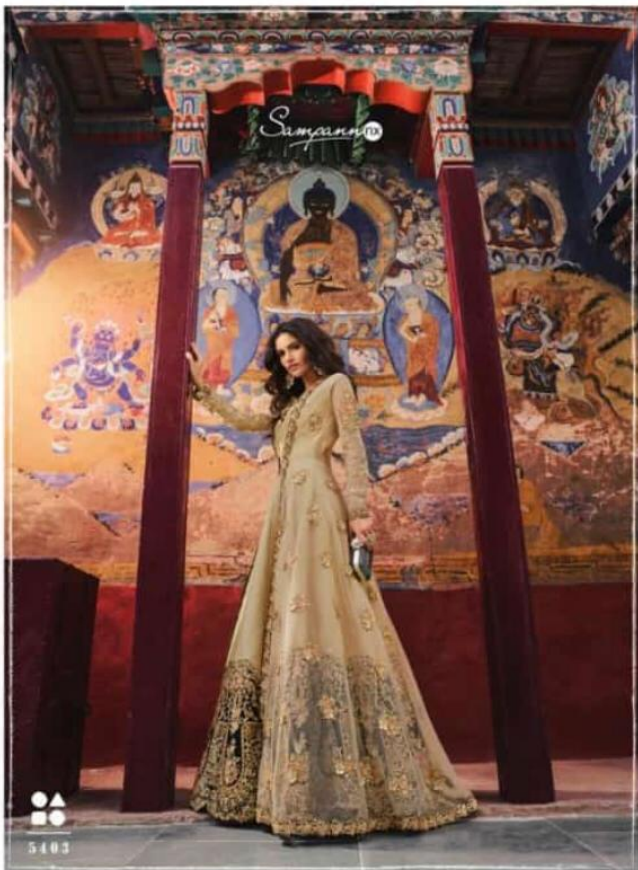


# SAGA

VOLA

*Sampann*nx



5401



5402



5403



5404



5405



5406

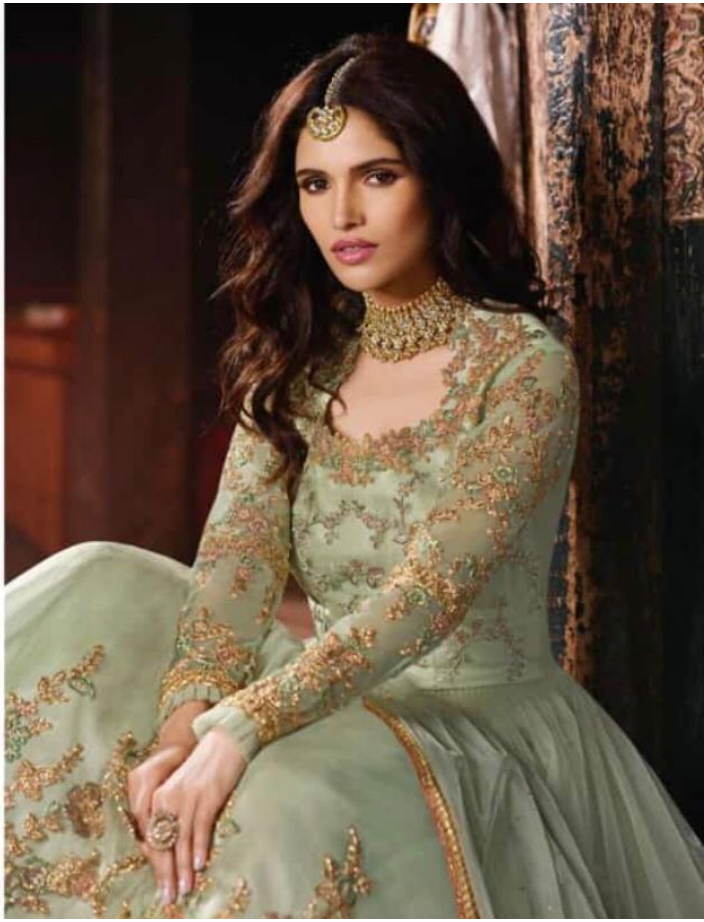


5407

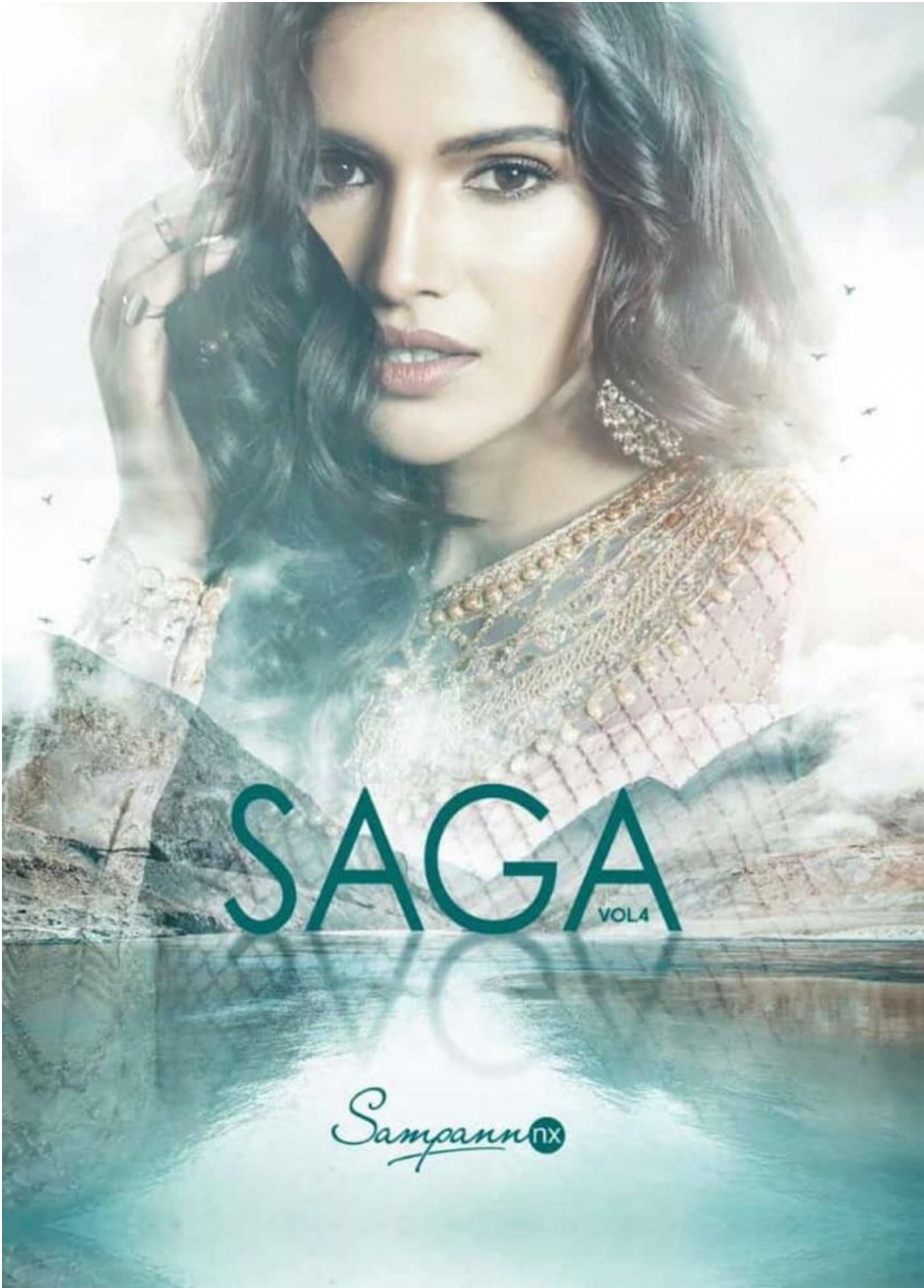


5408





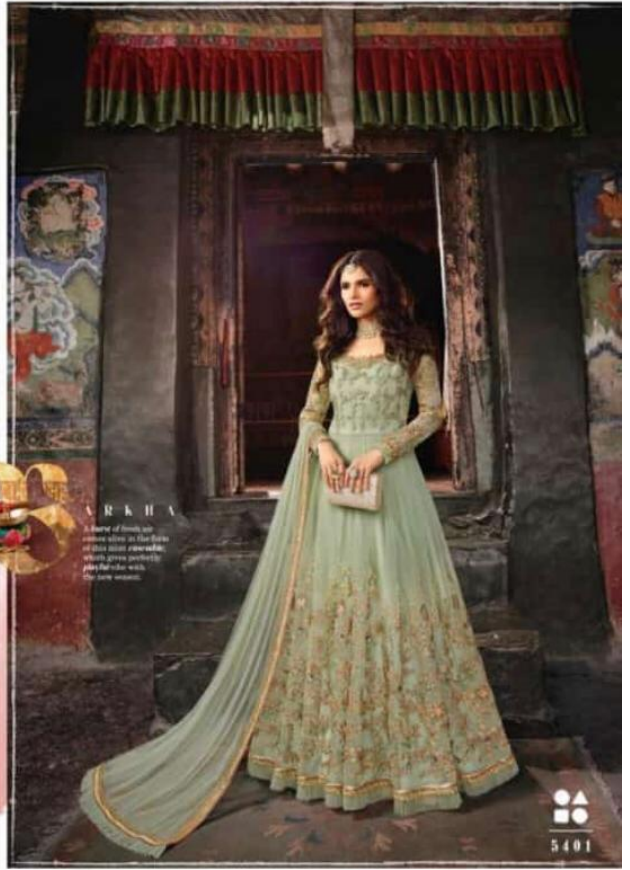


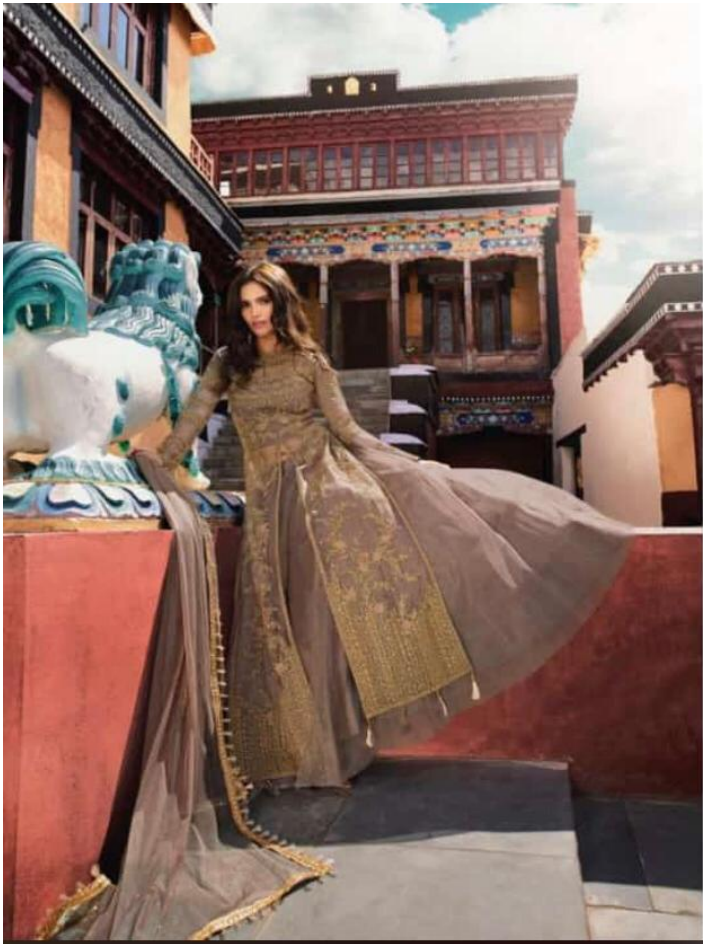


# SAGA

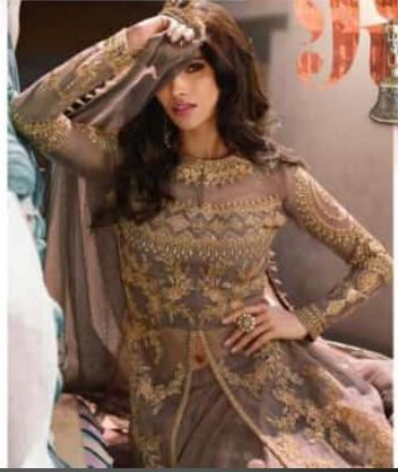
VOLA

*Sampann*nx





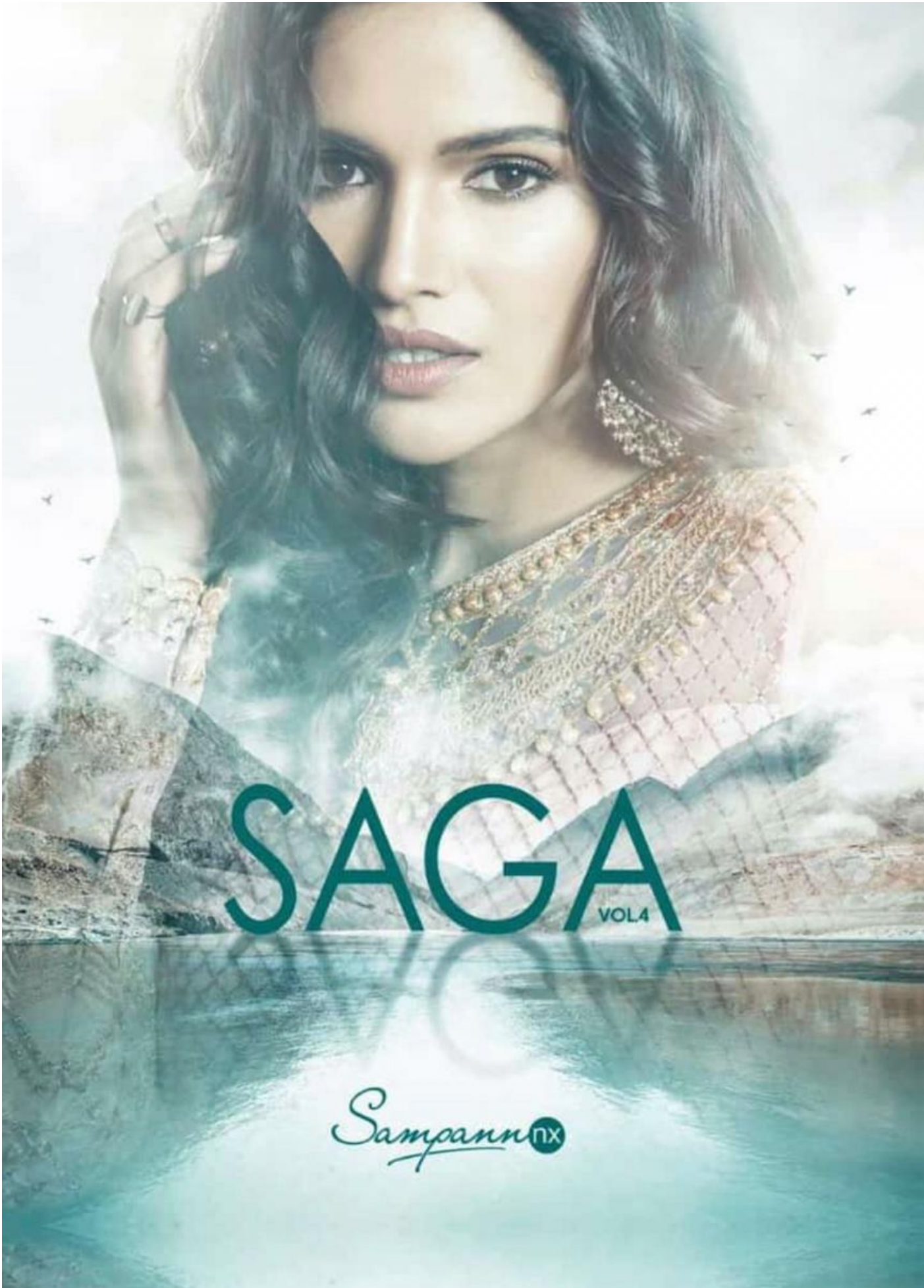
Sampark



ISSET  
Personal and elegant,  
the essential to perfect the  
evening wardrobe, under  
the stars, lighting etc.

5105

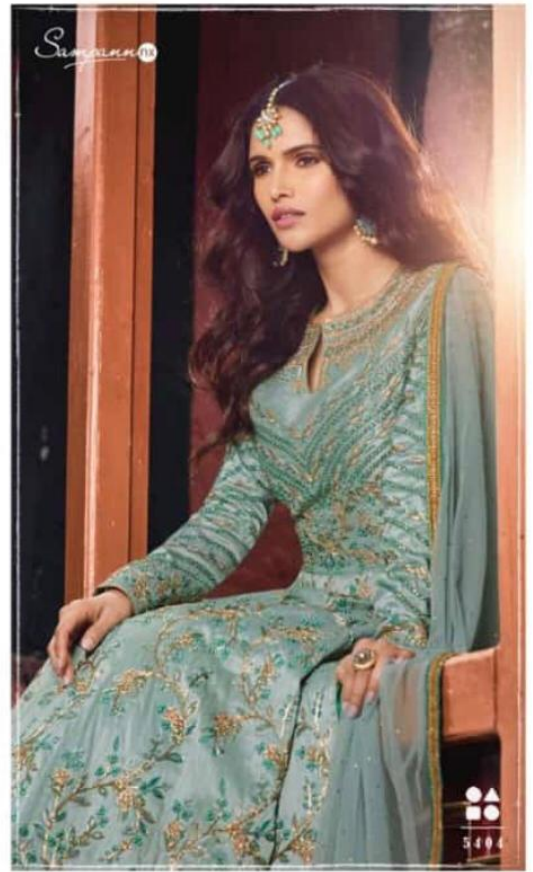


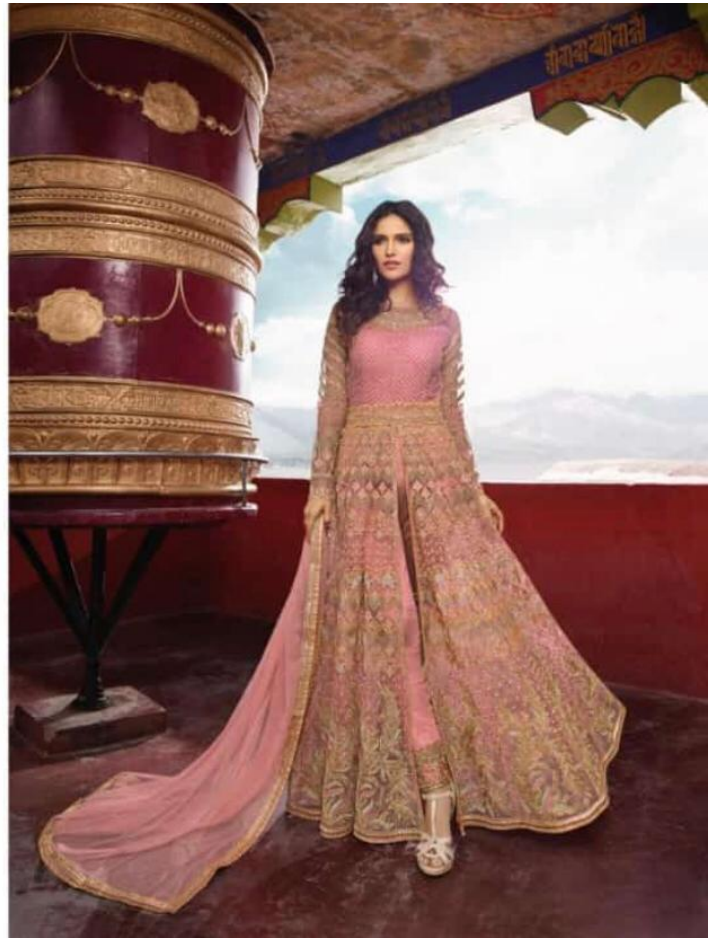
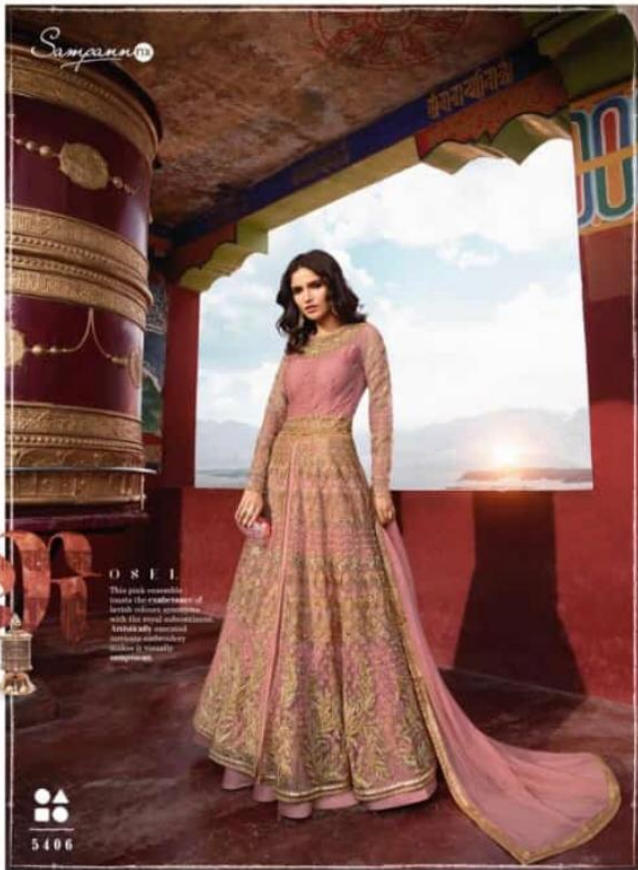


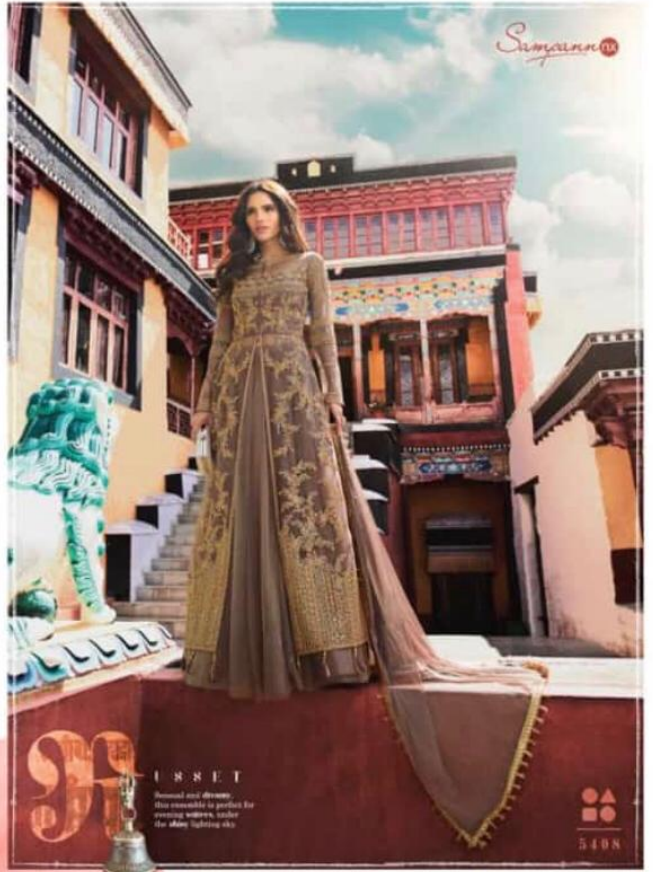
# SAGA

VOLA

Sampann<sup>nx</sup>







URSEI  
Removal and dresses  
This ensemble is perfect for  
evening events, under  
the shiny lighting sky

5108





21

Symbolizes the first years of  
the life, the dawn of a new dawn and  
new possibilities. The name for this collection  
is **Ladakh**. Every night in **Ladakh**, every child is  
a painting come to life, the smiling faces,  
the nature in its most raw and unfiltered  
form is a larger inspiration for this  
January collection.

Suzanne





Sempino

What makes you unique is how you are like differently  
celebrate each moment with full of love and life.

5405

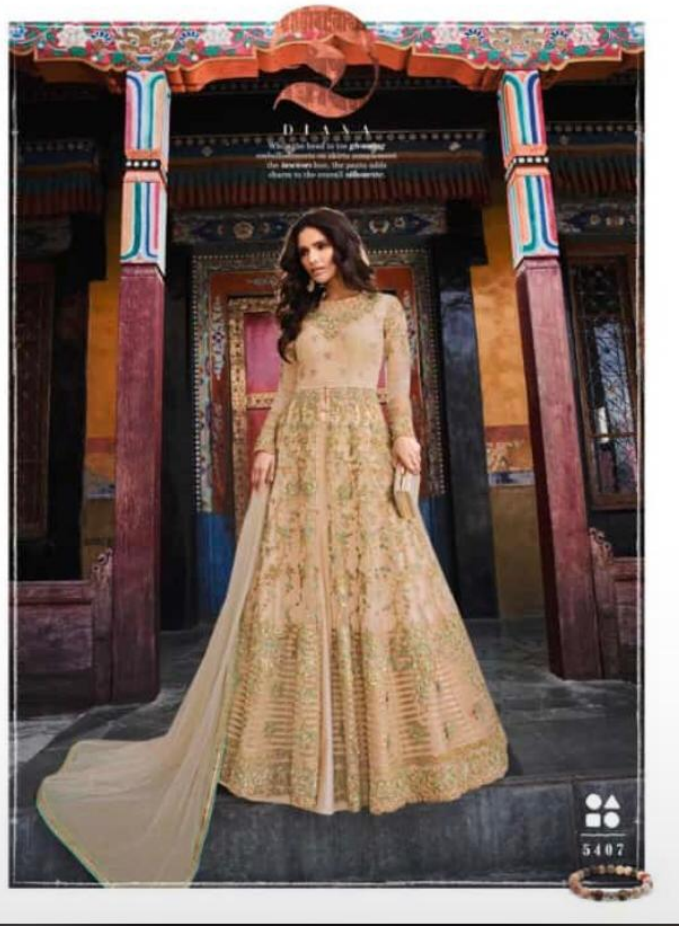
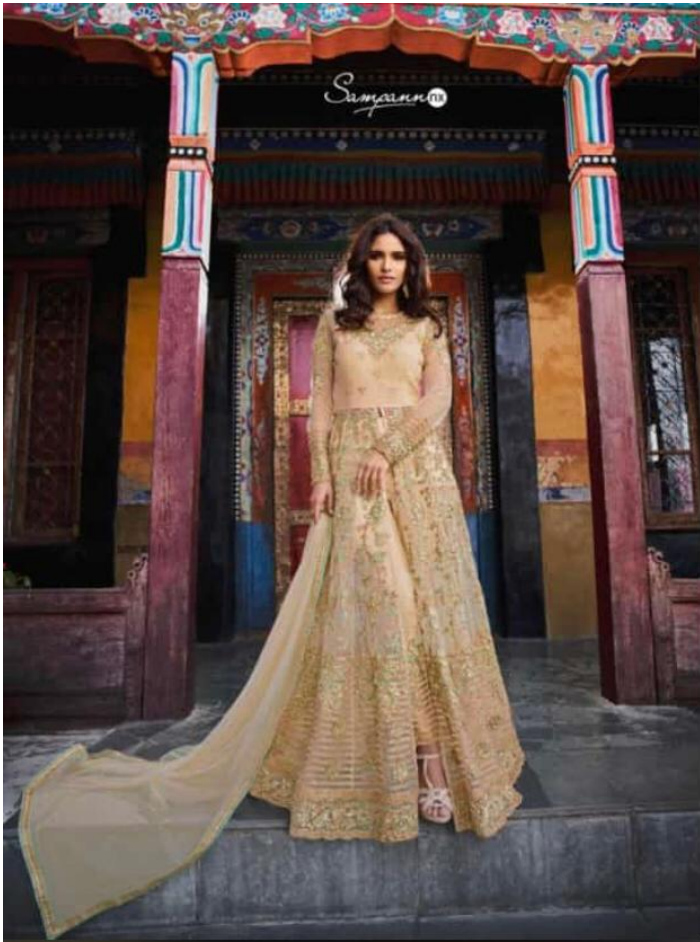


Suzanne®



5408

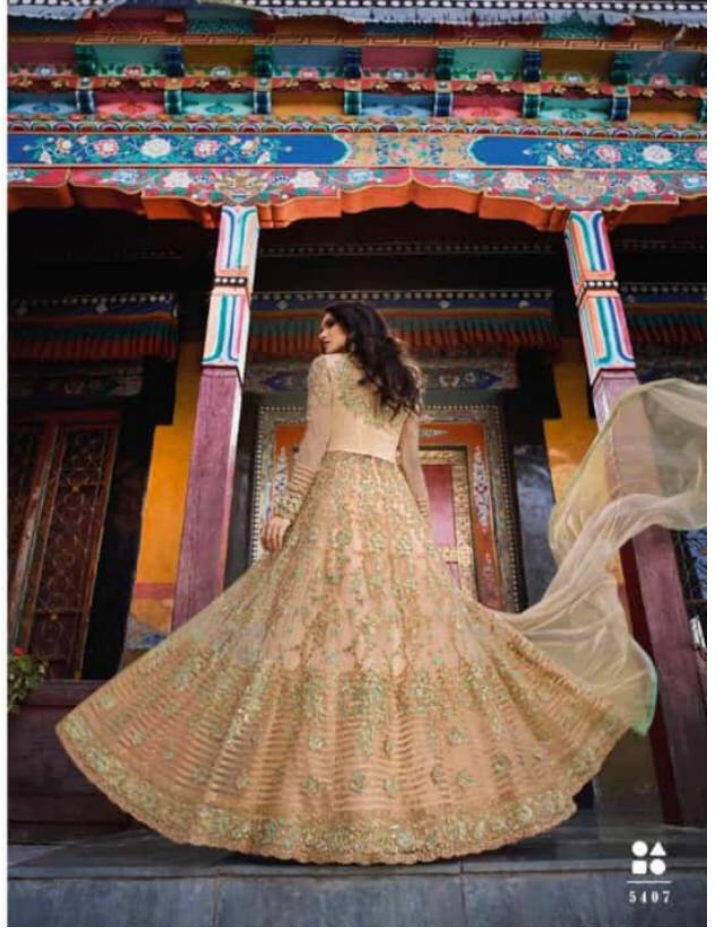


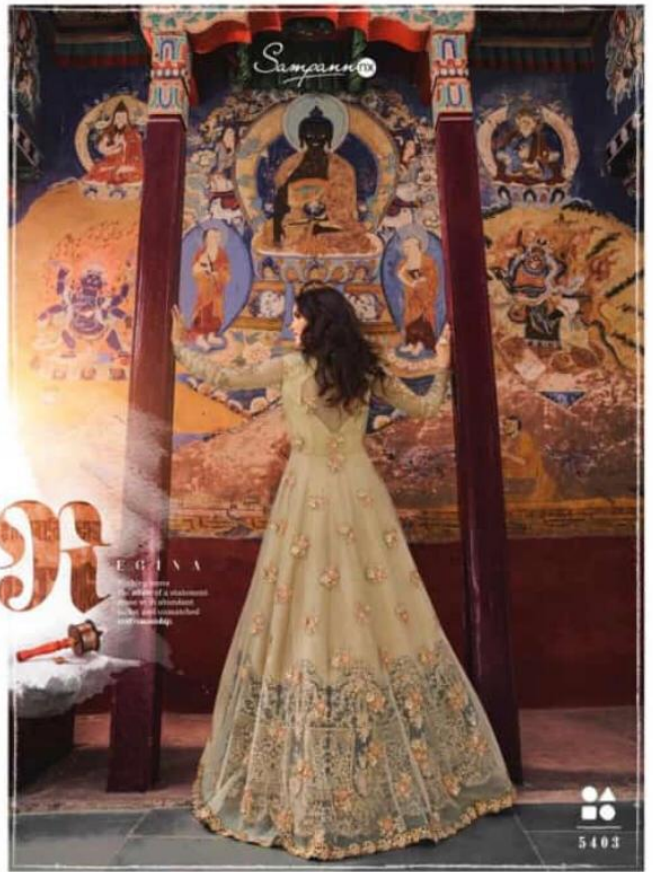
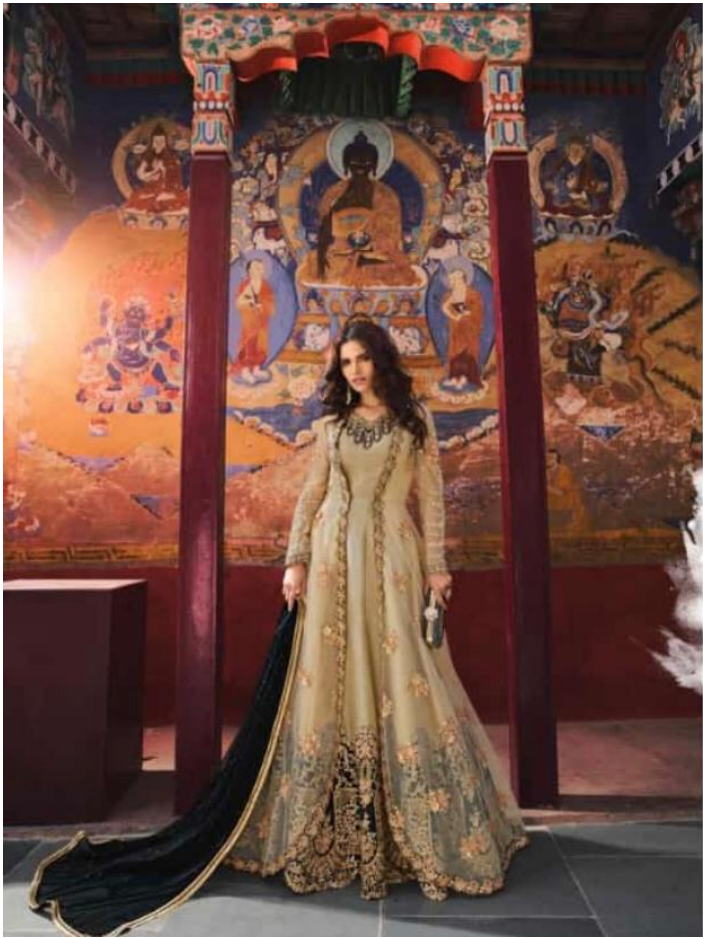


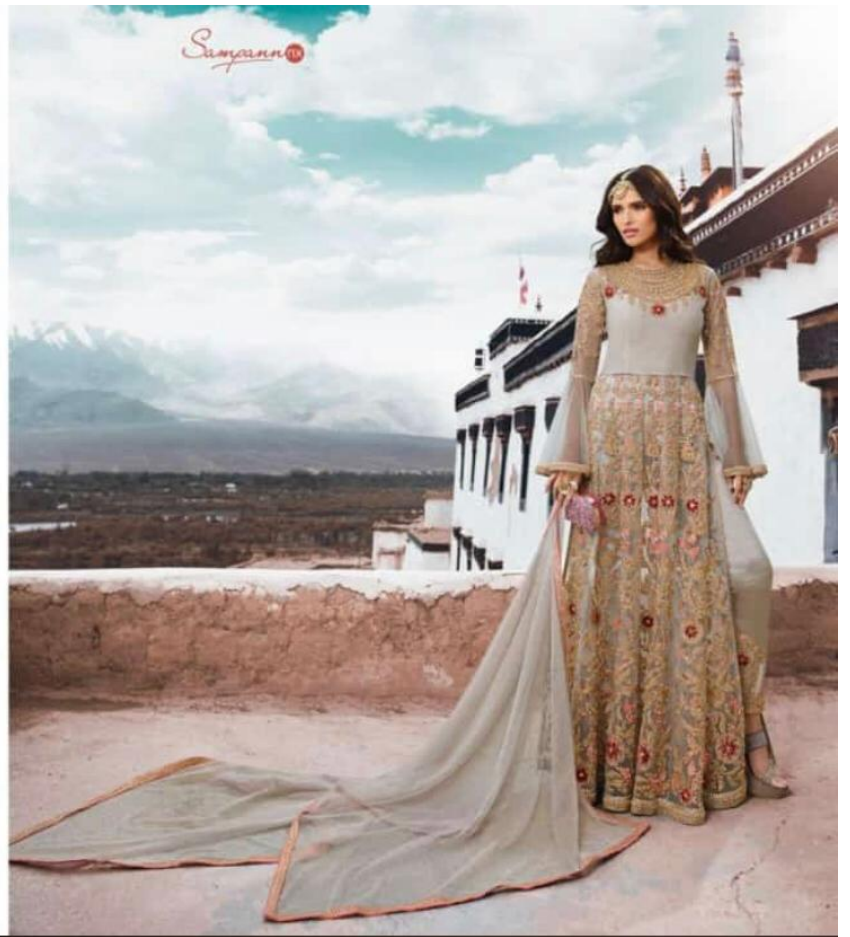
Sangam 18



**JANA**  
With the lead in our glowing  
embellishments on darks complement  
the new tone, the past white  
there in the overall silhouette.









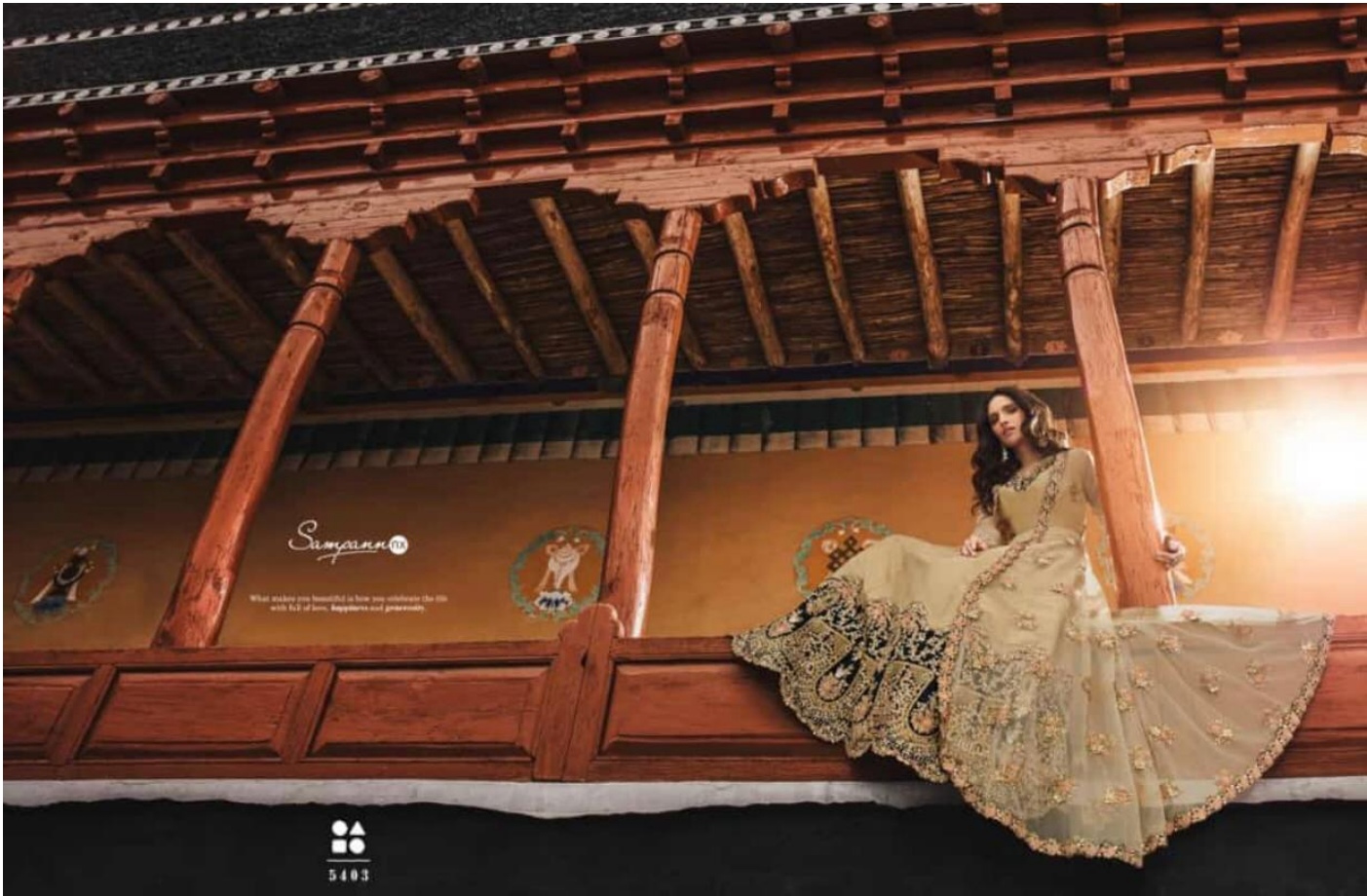


Sanyal

ZURE

Inspired by the warm  
blue skies and natural  
backdrops, the new season  
collection is the perfect  
bridge to today's lifestyles.

5401



Sangam

What makes you beautiful is how you embrace the life with full of love, happiness and generosity.

5403







EISHA

The quiet edge palette gives a serene, subtle essence, while the ornate, intricate detailing brings in life, a glow, and the radiant beauty of the occasion evening.

5485





**OREI**  
 The pink ensemble makes the statement of bold nature contrast with the royal embroidery. Artfully contrast intricate embroidery make it stylish ensemble.



3486