

KASMEERATM
KOEEN



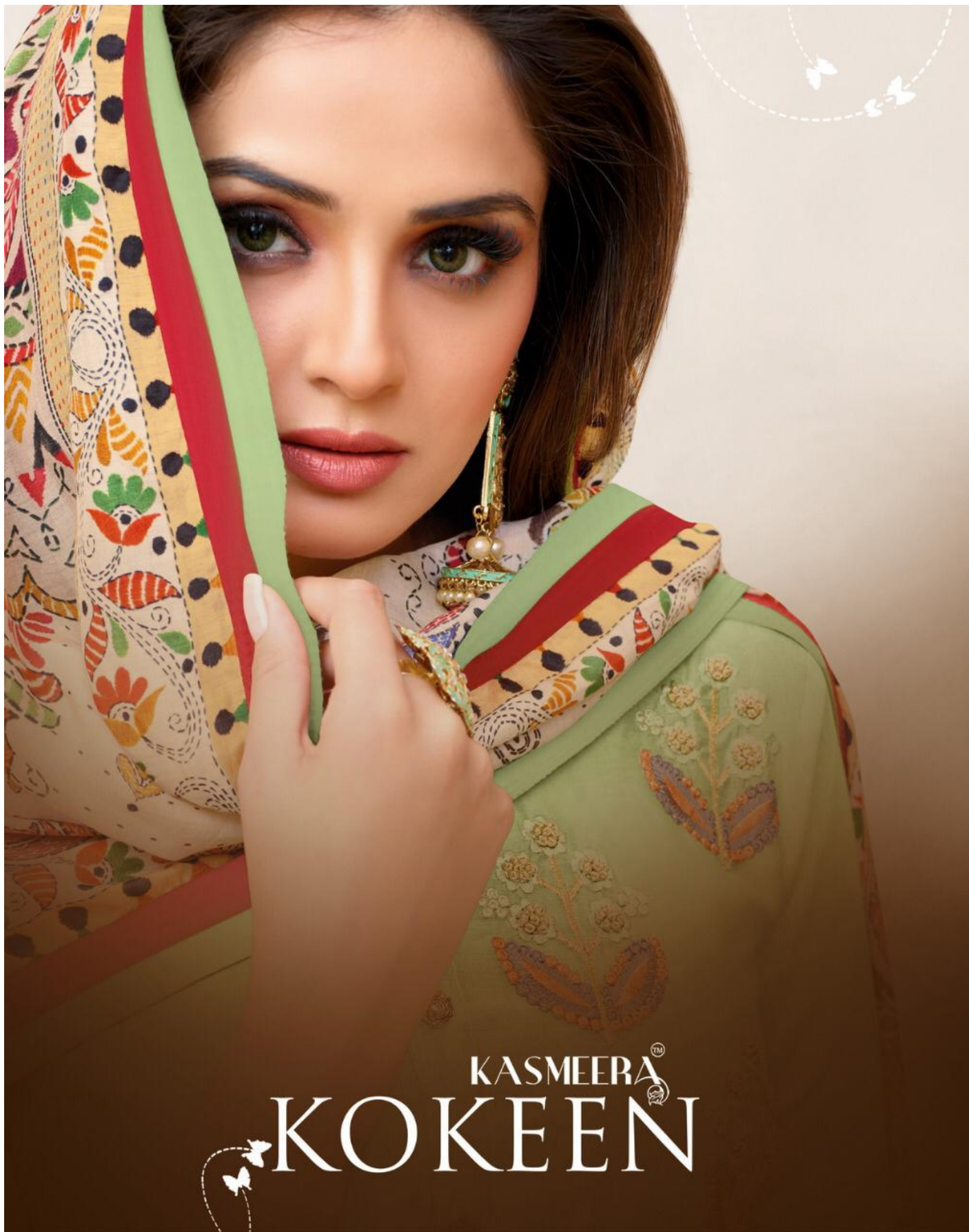
KASMEERA

RULE
OVER
THE
STYLE

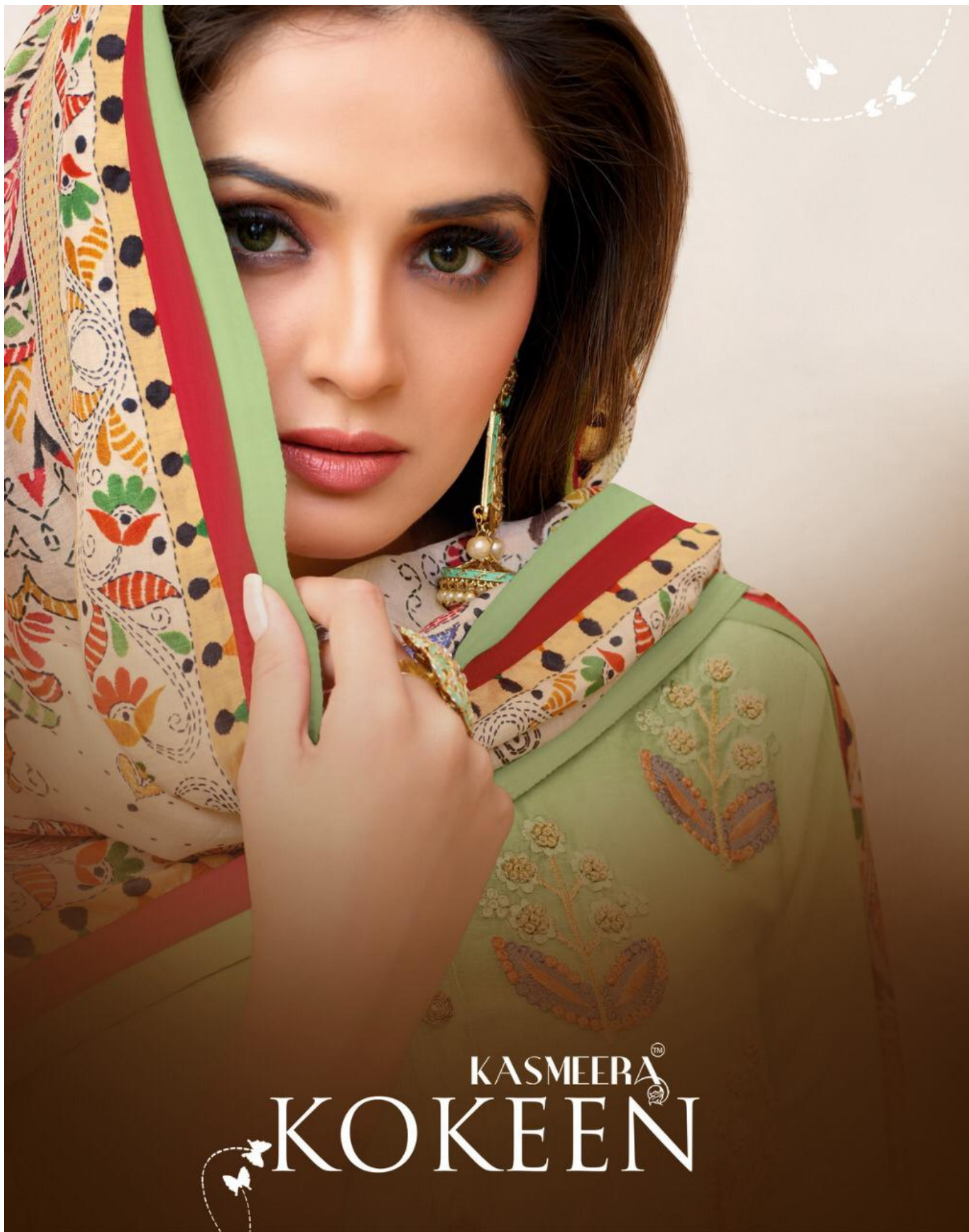
KOKEEN

MASSES WITH THE SEASONS
REINTERPRETATION OF IMPERIAL
ANDROGYNY, BEST SHOWCASED
THROUGH A GALLERY OF ROYAL
PORTRAITURE





KASMEERATM
KOEEN



KASMEERATM
KOEEN

LOOK EXCLUSIVE FEEL RADIANT
AN UNATTAINABLE LOOK



410



A GIRL SHOULD BE TWO THINGS
CLASSY AND FABULOUS





KASMEERA®

KASMEERA®
a quality product

Fabric Detail

D No.	TOP	BOTTOM	DUPATTA
405	Maslin with designer pettern 2.40mtr	Heavy Indo 2.50mtr	Maslin Digital Print 2.25mtr
406	Jam Silk with Embroidery Work 2.40mtr	Heavy Indo 2.25mtr	Chanderi With Heavy Work 2.25mtr
407	Modal Lining Digital 2.40mtr	Heavy Indo 2.50mtr	Naznin With Four Side Work Lace
408	Maslin Embroidery With Sequence 2.40mtr	Heavy Indo 2.25mtr	Maslin Digital Print 2.25mtr
409	Tasar Silk with Sequence Work 2.40mtr	Heavy Indo 2.25mtr	Chanderi Silk with Sequence Work
410	Modal SilkEmbroidery With Khatli Work 2.40mtr	Heavy Indo 2.25mtr	Maslin Digital Print 2.25mtr

MASSES WITH THE SEASONS
REINTERPRETATION OF IMPERIAL
ANDROGYNY, BEST SHOWCASED
THROUGH A GALLERY OF ROYAL
PORTRAITURE





405



406



407



408



409



410

KASMEERA
KOEEN

LOOK EXCLUSIVE FEEL RADIANT
AN UNATTAINABLE LOOK



409





IN ORDER TO BE IRREPLACEABLE
ONE MUST ALWAYS
BE DIFFERANT.





A GIRL SHOULD BE TWO THINGS;
CLASSY AND FABULOUS



A GIRL SHOULD BE TWO THINGS;
CLASSY AND FABULOUS



407

