

A woman with dark hair pulled back is the central figure. She is wearing a saree with a pinkish-purple base and green and gold borders. Her jewelry includes large, ornate earrings with colorful beads and tassels, a large, intricate necklace with a triangular pendant and colorful beads, a wide, ornate bracelet, and a large, dark ring. The background is a light-colored wall with a white, decorative, geometric pattern.

Ananya

Vol. 04



B-38





B-39

A woman with dark hair pulled back is the central figure. She is wearing a saree with a pinkish-purple base and green and gold geometric patterns. Her jewelry includes large, colorful earrings, a large necklace with a triangular pendant and colorful beads, a wide bracelet, and a ring. The background is a light-colored wall with a white decorative lattice pattern.

Ananya

Vol. 04



B-36



B-34



B-40



WOMEN FASHION



B-33

WOMEN AND FASHION ARE ALWAYS TOGETHER. THEY CHOOSE THE BEST COMBINATION & COLOR WHEN IT COME ABOUT THEIR STYLE. THE COMBINATION OF THE DESIGN HAS EVERYTHING.

FLORAL BEAUTY

RICH BROCADES, SHIMMERING PRINTS, INTRICATE HANDWORK, AND A MAGNIFICENT DISPLAY OF COLORS. ALL OUPHERED IN THIS SEASON WITH A SELECTIVE OF AMAZING KURTYS. INDULGE IN A VARIETY OF AMAZING COLLECTION.



B-35



B-37



B-31

A woman with dark hair pulled back is the central figure. She is wearing a saree with a pinkish-purple base and green and gold geometric patterns. Her jewelry includes large, ornate earrings with colorful beads and tassels, a large, intricate necklace with a triangular pendant and colorful beads, a wide, ornate bracelet, and a large, dark ring. The background is a light-colored wall with a white, decorative, scalloped pattern.

Ananya

Vol. 04

BEING FRIVOLOUS



FASHION IS NOT FRIVOLOUS. IT IS A PART OF BEING ALIVE TODAY. ALWAYS KEEP YOUR EYES OPEN, KEEP WATCHING, BECAUSE WHATEVER YOU SEE CAN INSPIRE YOU.



B-32



B-42



B-41



B-31



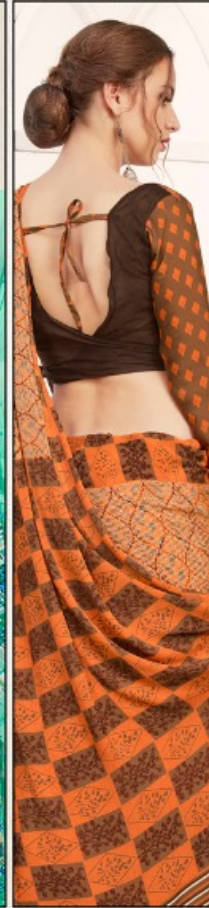
B-32



B-33



B-34



B-35



B-36



B-37



B-38



B-39



B-40



B-41



B-42