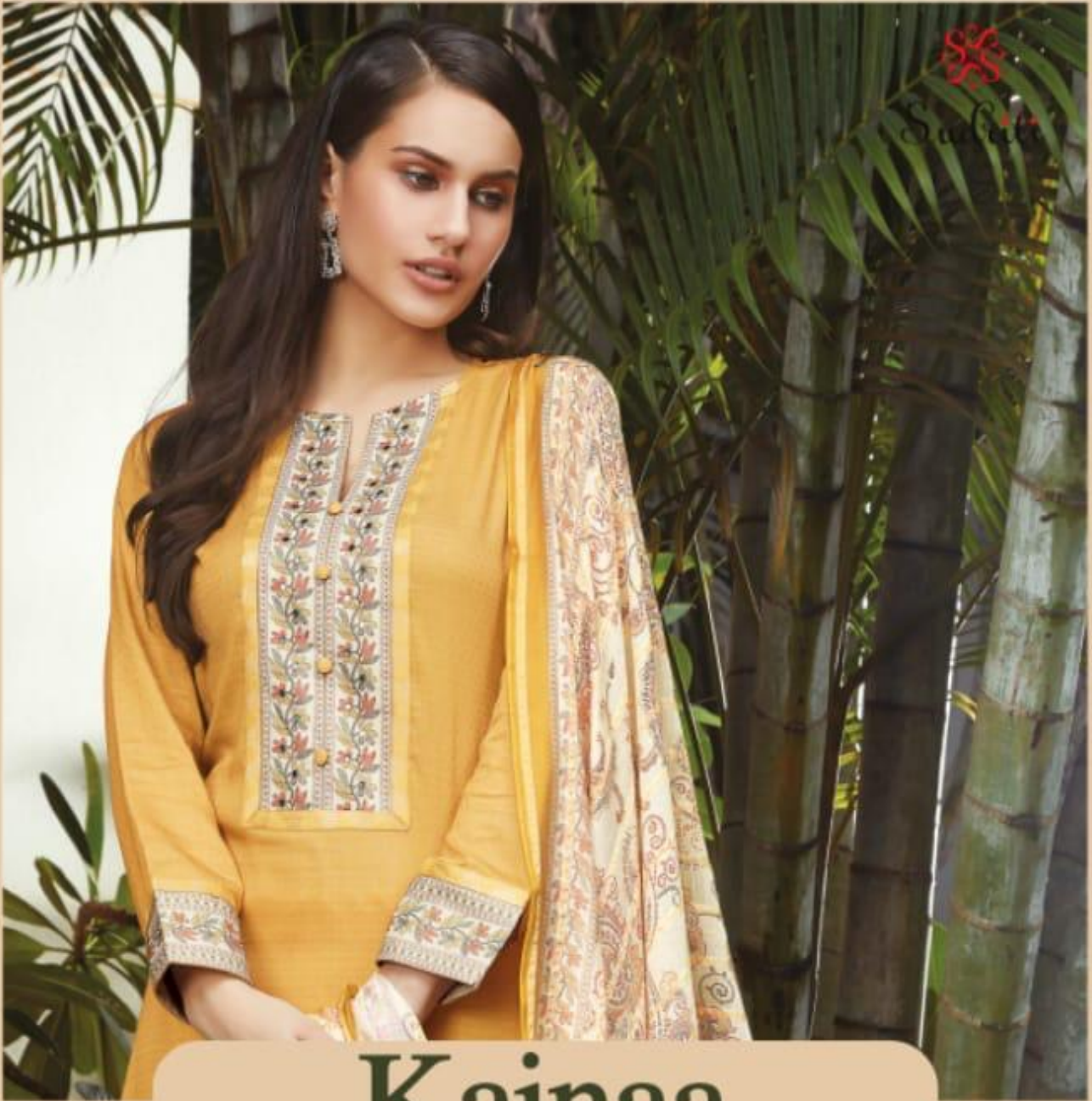




Suditi



Kainaa



Kainaa

H S N CODE - 5208

| DESIGN NO | DESCRIPTION | RATE |
|-----------|--|--------|
| 887 - 810 | | 1155/- |
| 836 - 850 | TOP - SATIN DYED WITH COTTON SATIN DIGITAL PRINTED | |
| 840 - 890 | SLEEV PATTI & NECK PATTI WITH HAND WORK | |
| 865 - 826 | BOTTOM - COTTON | |
| 899 - 800 | DUPATTA - FANCY ZARI DIGITAL PRINTED | |
| 870 - 858 | | |

TOTAL SUITS = 12 TOTAL AMOUNT - 13860/- AVG. RATE - 1155/-



Suditi



Kainaa

Sukiti

Kainaa



Design No.887



Design No.836



Design No.870



Design No.865



Design No.840



Design No.890



Design No.899



Design No.858



Design No.850



Design No.810



Design No.826



Design No.800



Design No.800







Design No. B50



Design No. 836


Suditi



All accessories are for shoot purpose only



Suditi



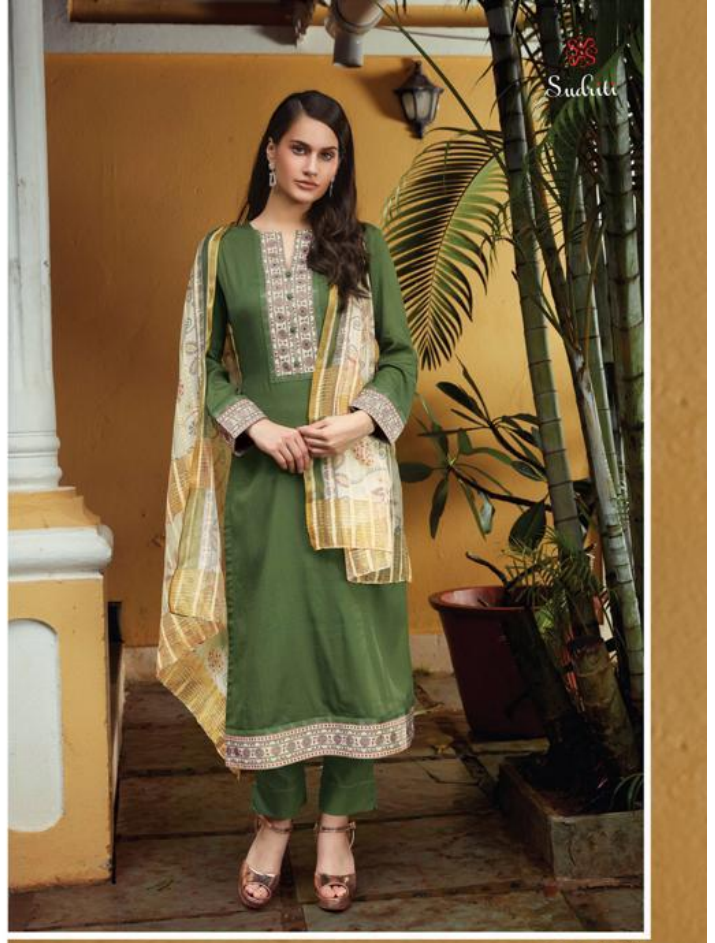
Kainaa

Design No.826

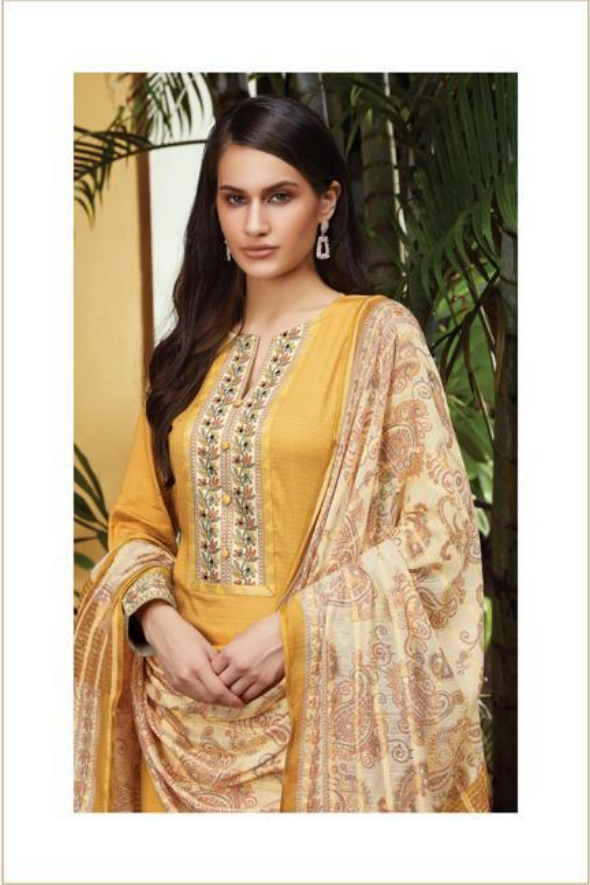




Design No.337

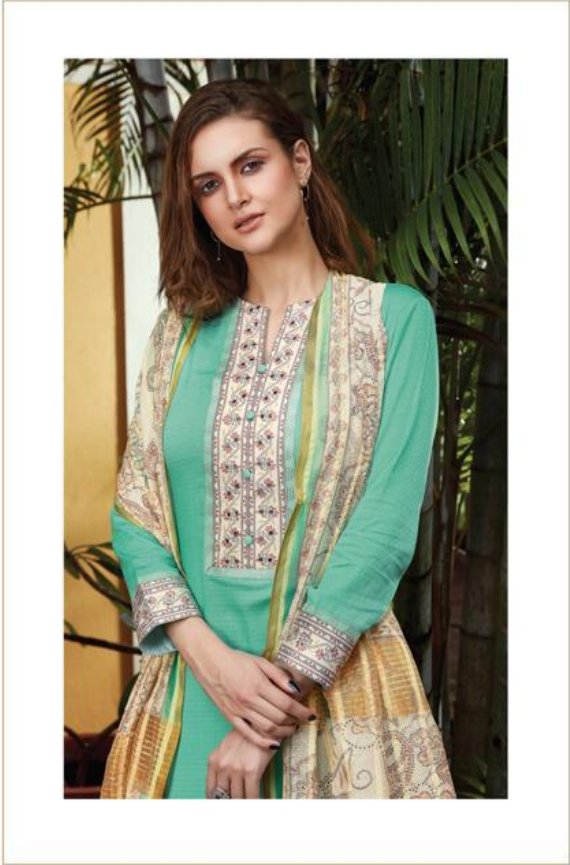


Design No.399



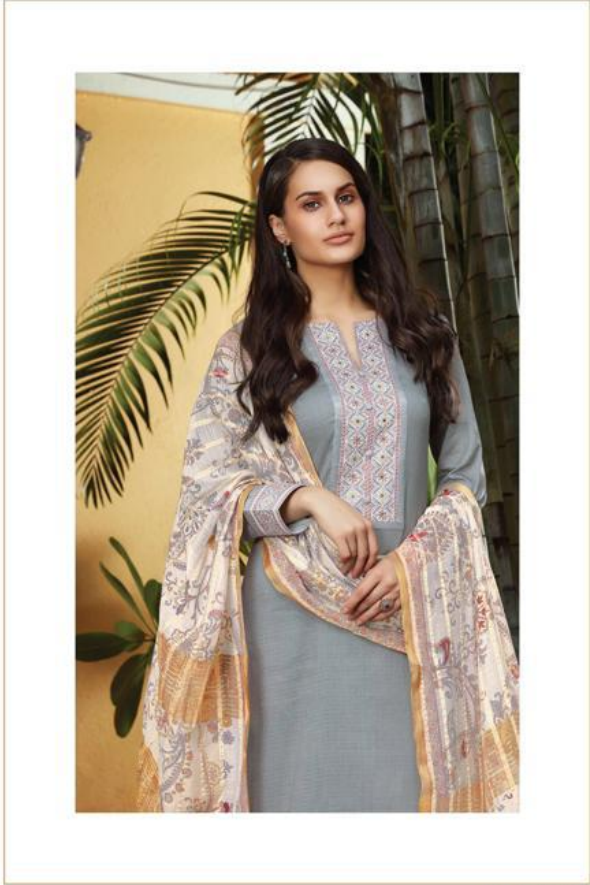
Design No. 870





Sukhiti

Design No. 390



Design No. 810



Suhita



Design No. 858



Design No.840

