



Silk SHINE





CATALOG NAME

Silk Shine

PIECES : **8**

	FABRICS DETAILS (Material Only)
TOP	Jam Silk Embroidery Work with Khatli Work
BOTTOM	Cotton
DUPATTA	Silk Diamond Work with Four Side Lace



5232





Silk SHINE







5231



5232



5235



5236



5233



5234



5237



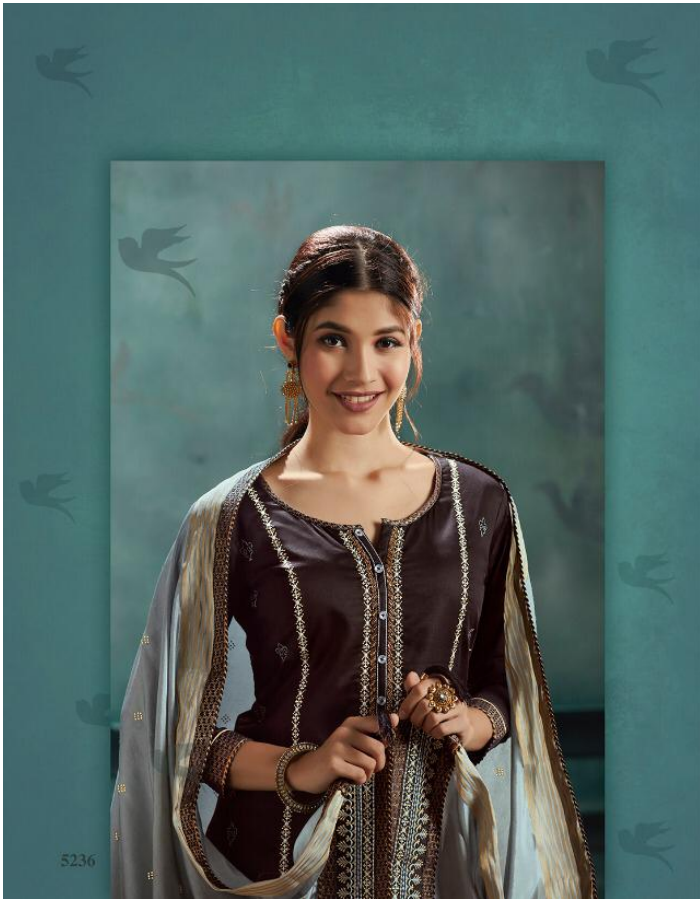
5238





5237







We're excited to announce



Has Launched New Catalog

Silk
SHINE

BOOK NOW

Fabrics Details

TOP :- Jam Silk Embroidery Work
with Khatli Work

BOTTOM :- Cotton

DUPATTA :- Silk Diamond Work with
Four Side Lace

No.of Design :- 08

Dispatching :- 5 to 6 Days Later

Booking Started From Now.....

Book Your Order ASAP.....





5231



TRADITIONAL
design





5238

ICE

TOP	JAM SILK EMBROIDERY WITH KHATLI WORK
DUPATTA	SILK DIAMOND WORK WITH FOUR SIDE LACE
BOTTOM	COTTON



SAREE | SUITS | LEHENGA | TUNICS

Follow us on



complimentary copyright for sale



Silk SHINE





5234



5234