

A woman with dark hair pulled back, wearing a yellow long-sleeved top with intricate gold embroidery down the center and on the cuffs. She is draped in a light beige, textured shawl. She wears large, ornate gold earrings. The background is a textured, golden-brown wall with green leaves and vines. The word 'VARSHA' is printed in purple in the upper right, and 'Nividha' is printed in white in the lower right.

VARSHA

Nividha







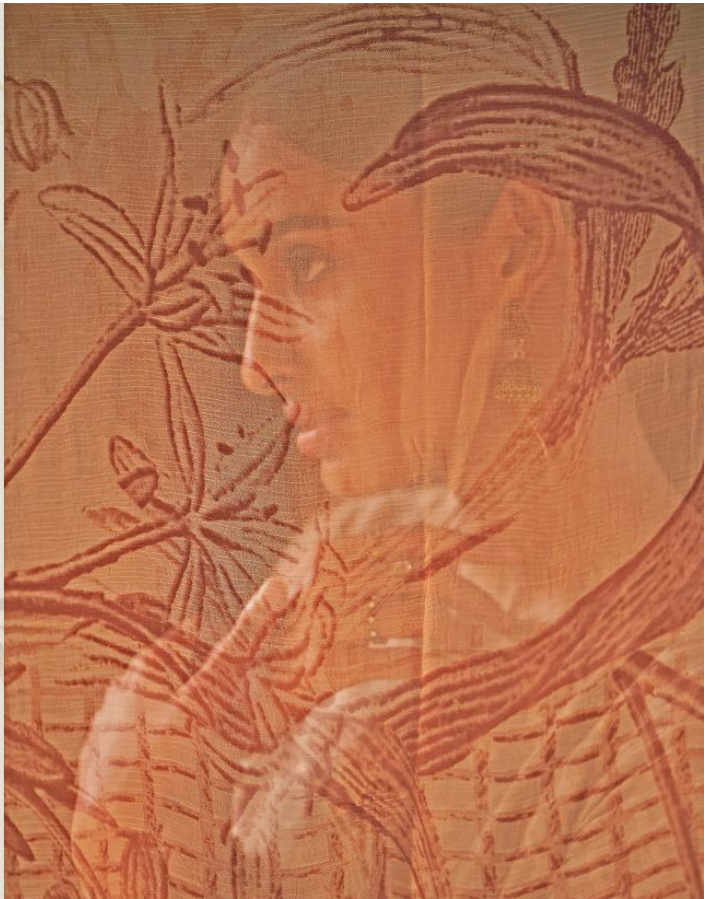


VARSHA

Nividha











VARSHA

Nividha

VARSHA



ND-21



ND-22



ND-24



ND-25



ND-23



ND-26

PRESENTING TO YOU OUR NEW CATALOGUE



Nividha

FROM VARSHA FASHIONS

DESIGN NO.	CATALOG NAME	DESCRIPTION	PRICE
ND-21	NIVIDHA	TOP : BANARSI WEAVE SELF FABRIC WITH LINING AND EMBROIDERY BOTTOM : SUPERIOR COTTON PRINTED DUPATTA : COTTON PRINTED	1480/-
ND-22	NIVIDHA	TOP : BANARSI WEAVE SELF FABRIC WITH LINING AND EMBROIDERY BOTTOM : SUPERIOR COTTON PRINTED DUPATTA : COTTON PRINTED	1480/-
ND-23	NIVIDHA	TOP : BANARSI WEAVE SELF FABRIC WITH LINING AND EMBROIDERY BOTTOM : SUPERIOR COTTON PRINTED DUPATTA : COTTON PRINTED	1480/-
ND-24	NIVIDHA	TOP : BANARSI WEAVE SELF FABRIC WITH LINING AND EMBROIDERY BOTTOM : SUPERIOR COTTON PRINTED DUPATTA : COTTON PRINTED	1480/-
ND-25	NIVIDHA	TOP : BANARSI WEAVE SELF FABRIC WITH LINING AND EMBROIDERY BOTTOM : SUPERIOR COTTON PRINTED DUPATTA : COTTON PRINTED	1480/-
ND-26	NIVIDHA	TOP : BANARSI WEAVE SELF FABRIC WITH LINING AND EMBROIDERY BOTTOM : SUPERIOR COTTON PRINTED DUPATTA : COTTON PRINTED	1480/-
Total Pieces: 6		Total Amount: 8,880 + GST	







