



MRIGNI<sup>®</sup>  
Be a mrigni lady  
SARARA





THE FLAVOR  
OF SUBTLE ETHNIC WEAR THAT  
MEETS THE CONTEMPORARY GLAM  
VIVIDLY EXPLODES WITH MINUTE  
DETAILS OF ELEGANCE.





\*\*\*\*\*  
IMMERSE YOURSELF IN UNEXPECTED BRIGHT  
COLORS AND TEXTURES.

\* 8006 \*



**MRIGNI**<sup>®</sup>  
Be a mrigni lady  
**SARARA**





MRIGNI<sup>®</sup>  
Be a mrigni lady  
SARARA





**MRV GNI**  
Be a mrigni lady



CLASSIC STYLES WITH LUXURIOUS SOFT FABRICS ARE HIGHLIGHTED BY  
REFINED AND FEMINE DETAILS.

\* 8001 \*



MRV GNI  
Be a mrigya lady  
SARARA



A BLEND  
OF COLORS  
THAT  
HIGHLIGHT  
EVERY CORNER  
OF THE  
ATTRACTIVE  
DESIGNS THAT  
IN TURN  
ADORN YOU  
WITH VAST  
BEAUTY.



THE CONTEMPORARY DESIGN FOR THE FASHION CONSCIOUS WOMAN WHILE PRESERVING THE TRADITIONAL ART AND CULTURE OF INDIA.

\* 8003 \*







**MRV GNI**  
Be a mrigni lady



SIMPLE  
ELEGANCE  
AND  
TRADITIONAL  
WITH  
LUXURIOUS  
FABRICS  
\* 8002 \*



\*\*\*\*\*  
EMBRACE THE PUREST TRENDS THIS SEASON.  
\*\*\*\*\*

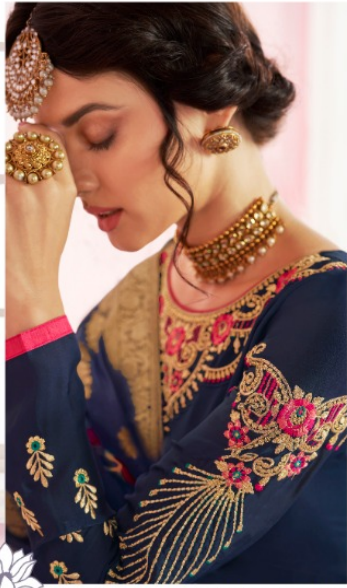


**MRYGNI**  
Be a mrygnl lady

\* 8004 \*



**MRYGNI**  
Be a mrygni lady



ELEGANCE AND  
SOPHISTICATION  
CREATE A CHARMING  
SYMPHONY...

\* 8005 \*



\* 8001 \*



\* 8002 \*



\* 8005 \*



\* 8006 \*



\* 8003 \*



\* 8004 \*

  
Be a mrigni lady  
**SARARA**