

MONIKA

by

MUGDHA



11015



11016



11017

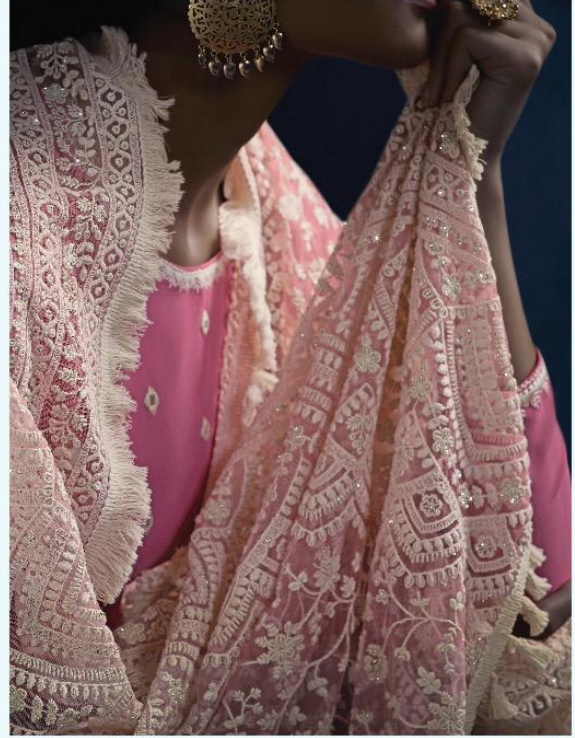


11048



11049

MUGDHA

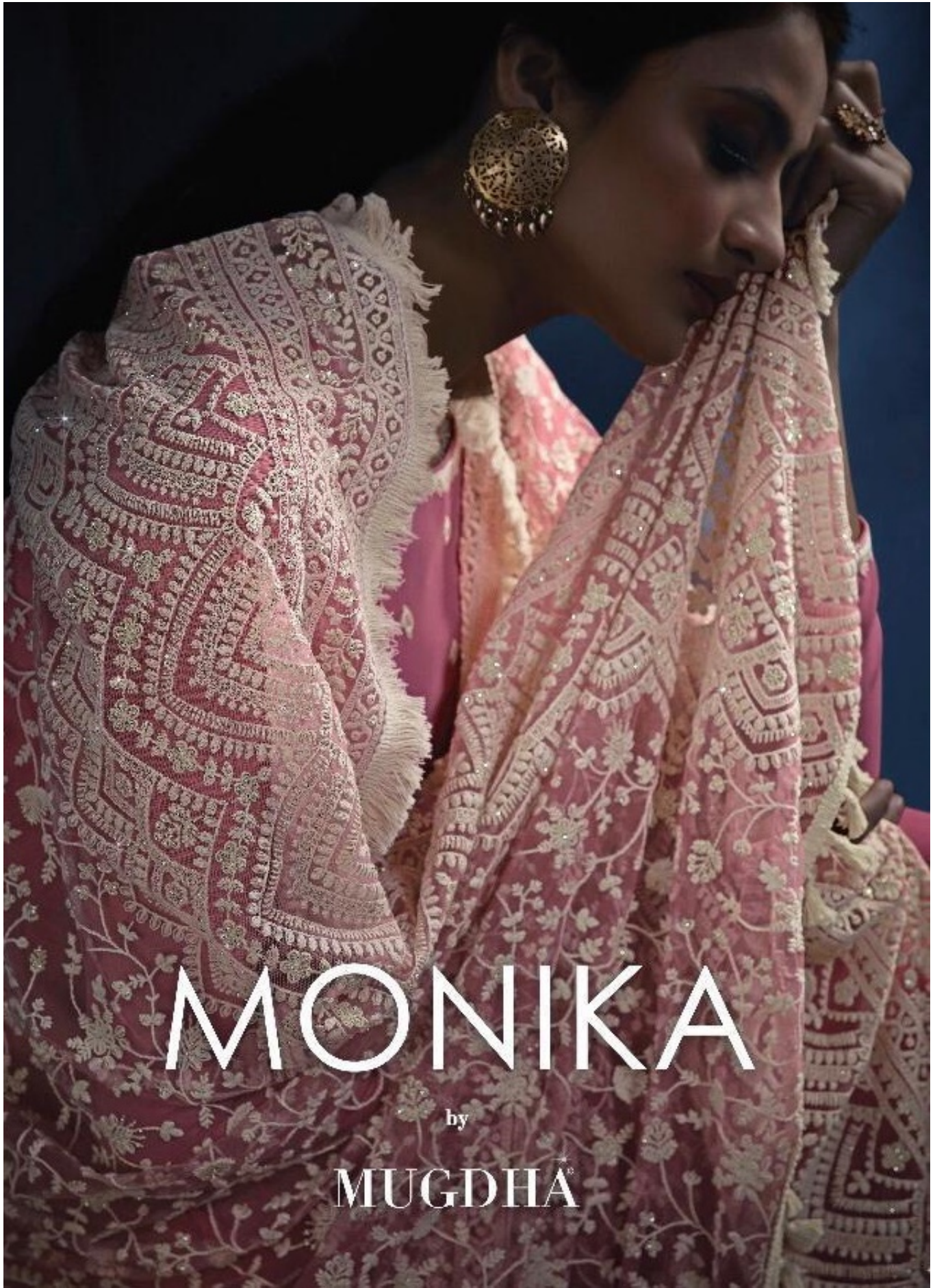


MUGDHA



11019





MONIKA

by

MUGDHA



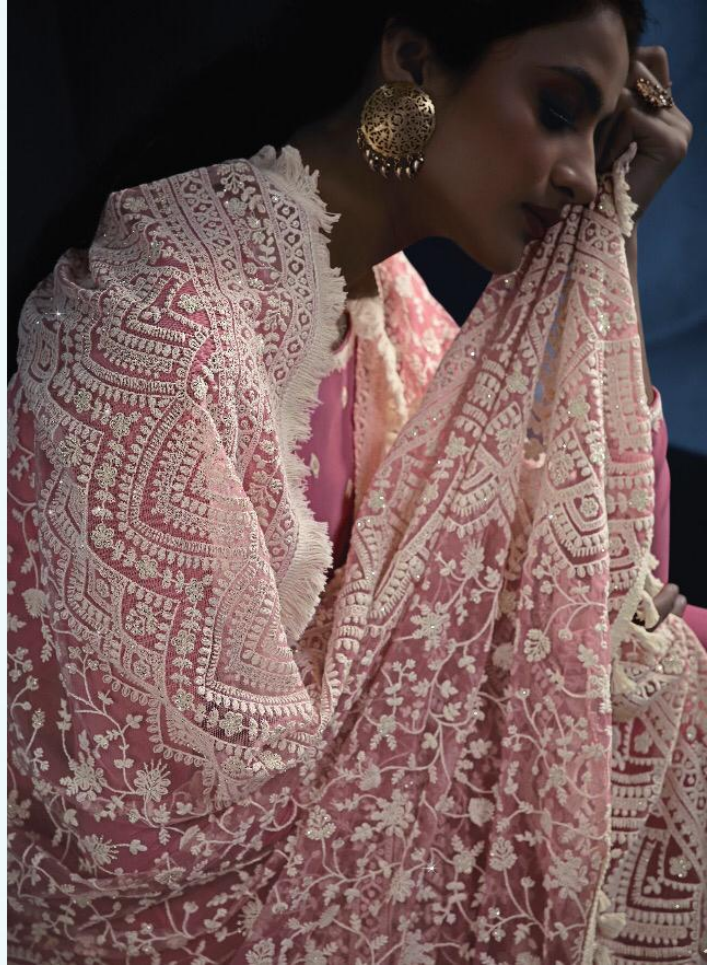
MUGDHA

11015

MUGDHA



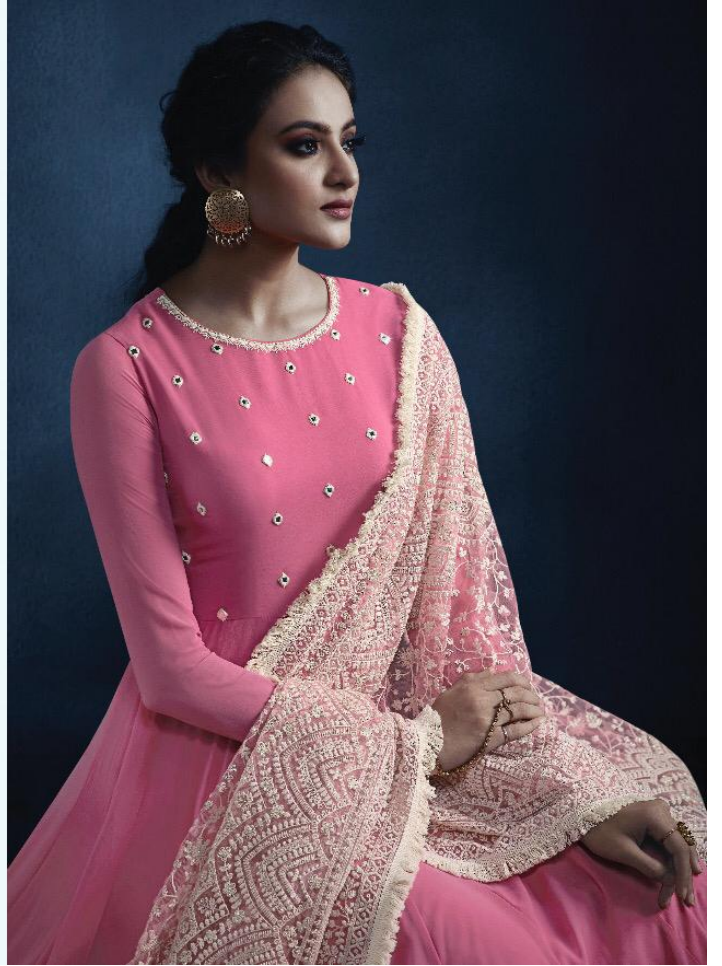
11017



MUGDHA



11047





MUGDHA

11047



**MONIKA BY MUGDHA**

DESIGN NO.	DESCRIPTION	WORK DETAILS	USP	RATE
11045	GEORGETTE, NET, INNER-SANTOON, RAW SILK	SEQUIN, RESHAM EMBROIDERY, HANGING LACE, WHITE CORDING LACE	RICH LUCKHNAWI HEAVY DUPATTA, FLOOR LENGTH ANARKALI WITH NEW ENGLISH COLOUR TOP	2145
11046	SILKY GEORGETTE, NET, INNER-SANTOON	SEQUIN, RESHAM EMBROIDERY, HANGING LACE, HANDWORK PEARL	TORQUISH BLUE TOP WITH PEARL BUTTONS, LUCKHNAWI HEAVY DUPATTA, FLOOR LENGTH BIAS CUT OUTFIT.	2045
11047	FAUX GEORGETTE, NET, INNER-SANTOON, RAW SILK	RESHAM EMBROIDERY WORK, MIRROR WORK	ITS DUPATTA & MIRROR WORK YOKE, SHARP & RICH LUCKHNAWI DUPATTA, FLOOR LENGTH ANARKALI WITH CONTRAS BACK BORDER	2155
11048	FAUX GEORGETTE, NET, INNER-SANTOON, DIGITAL PRINT BORDER	SEQUIN, RESHAM EMBROIDERY, HANGING LACE, ZARI WORK	UNIQUE CONTRAS MATCHING TOP DUPATTA WITH DIGITAL PRINT BORDER, FLOOR LENGTH ANARKALI, HEAVY LUCKHNAWI DUPATTA	2195
11049	SILKY GEORGETTE, NET, INNER-SANTOON, BANGALORI SILK	RESHAM EMBROIDERY WORK, MIRROR WORK	NEW BOTTLE GREEN COLOUR WITH HRAVY LUCKHNAWI DUPATTA, FLOOR LENGTH ANARKALI, MIRROR WORK ON SLEEVES & YOKE	2145

AVERAGE PRICE :- 2137

FULL SET PRICE :- 10685

EDIT

www.karagöz.it

# MONIKA

by

MUGDHA

MUGDHA®



MUGDHA



11016

MUGDHA



11018





11045

MUGDHA

MUGDHA



11019

MUGDHA



110 16







MUGDHA



11048