

The background of the entire page is a close-up photograph of a red fabric, likely a saree, featuring wide gold-colored stripes and intricate floral embroidery. The fabric is draped, creating soft folds and shadows. The word 'VARSHA' is printed in a blue, sans-serif font with a green triangle under the 'A'.

VARSHA

KARIGARI

VOLUME-2



PRESENTING TO YOU OUR NEW CATALOGUE

KARIGARI

VOLUME-2

FROM VARSHA FASHIONS

PRODUCT DETAILS

: TOP :

IBIZA PASHMINA WITH EMBROIDERY

: BOTTOM :

IBIZA PASHMINA

: DUPATTA :

PURE CHINON DIGITAL PRINTED



PRESENTING TO YOU OUR NEW CATALOGUE



KARIGARI

VOLUME-2

FROM VARSHA FASHIONS

DESIGN NO.	CATALOG NAME	DESCRIPTION	PRICE
101	KARIGARI VOLUME-2	TOP : IBIZA PASHMINA WITH EMBROIDERY BOTTOM : IBIZA PASHMINA DUPATTA : PURE CHINON DIGITAL PRINTED	1680/-
102	KARIGARI VOLUME-2	TOP : IBIZA PASHMINA WITH EMBROIDERY BOTTOM : IBIZA PASHMINA DUPATTA : PURE CHINON DIGITAL PRINTED	1680/-
103	KARIGARI VOLUME-2	TOP : IBIZA PASHMINA WITH EMBROIDERY BOTTOM : IBIZA PASHMINA DUPATTA : PURE CHINON DIGITAL PRINTED	1680/-
104	KARIGARI VOLUME-2	TOP : IBIZA PASHMINA WITH EMBROIDERY BOTTOM : IBIZA PASHMINA DUPATTA : PURE CHINON DIGITAL PRINTED	1680/-
105	KARIGARI VOLUME-2	TOP : IBIZA PASHMINA WITH EMBROIDERY BOTTOM : IBIZA PASHMINA DUPATTA : PURE CHINON DIGITAL PRINTED	1680/-
106	KARIGARI VOLUME-2	TOP : IBIZA PASHMINA WITH EMBROIDERY BOTTOM : IBIZA PASHMINA DUPATTA : PURE CHINON DIGITAL PRINTED	1680/-
107	KARIGARI VOLUME-2	TOP : IBIZA PASHMINA WITH EMBROIDERY BOTTOM : IBIZA PASHMINA DUPATTA : PURE CHINON DIGITAL PRINTED	1680/-
108	KARIGARI VOLUME-2	TOP : IBIZA PASHMINA WITH EMBROIDERY BOTTOM : IBIZA PASHMINA DUPATTA : PURE CHINON DIGITAL PRINTED	1680/-

Total Pieces: 8

Total Amount: 13440 + GST



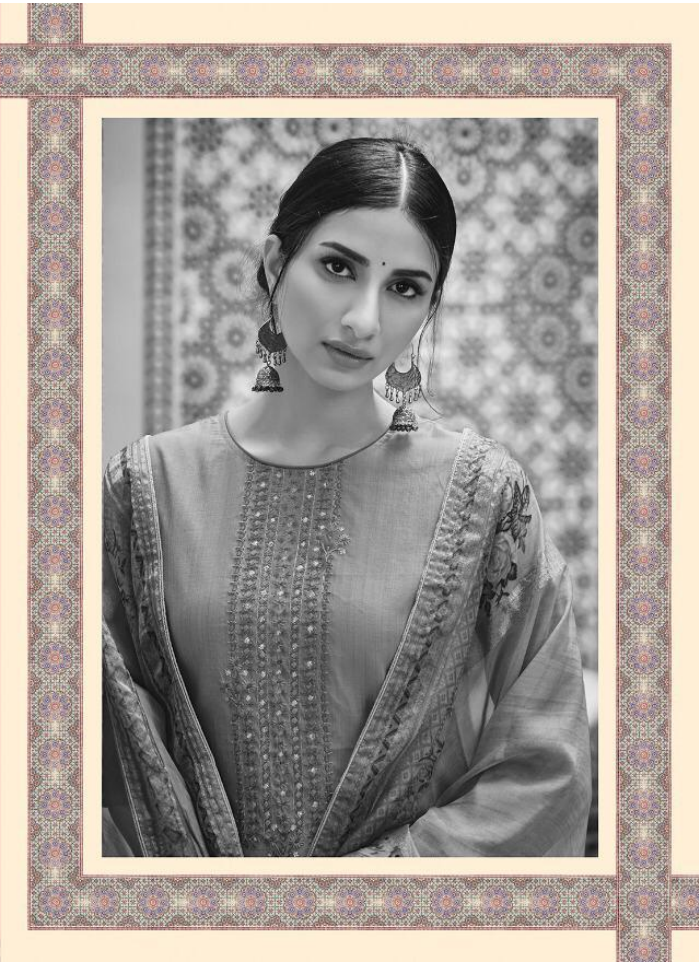
(Design no. 104)

The background of the entire page is a close-up photograph of a red fabric, likely a saree, featuring wide gold-colored stripes and intricate floral embroidery. The fabric is draped, creating soft folds and shadows. The word 'VARSHA' is printed in a blue, sans-serif font with a green triangle at the base of the 'A'.

VARSHA

KARIGARI

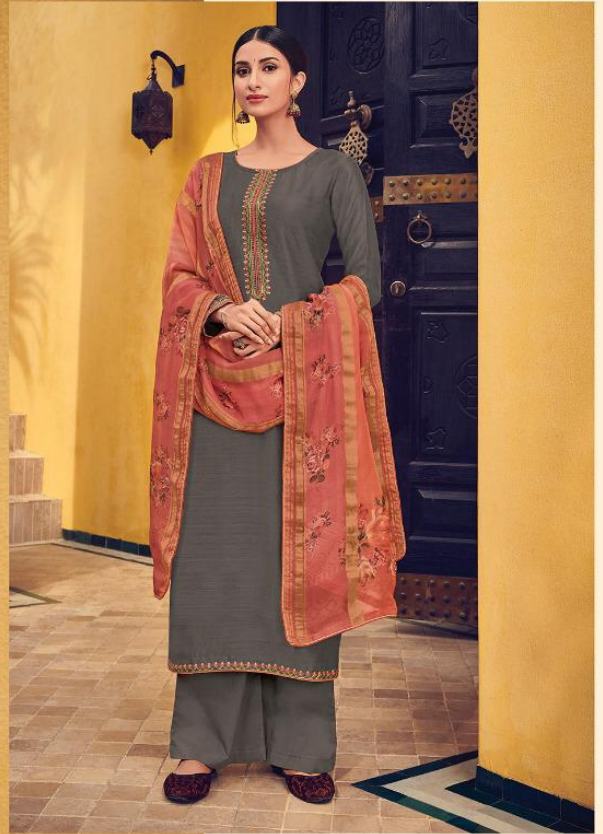
VOLUME-2







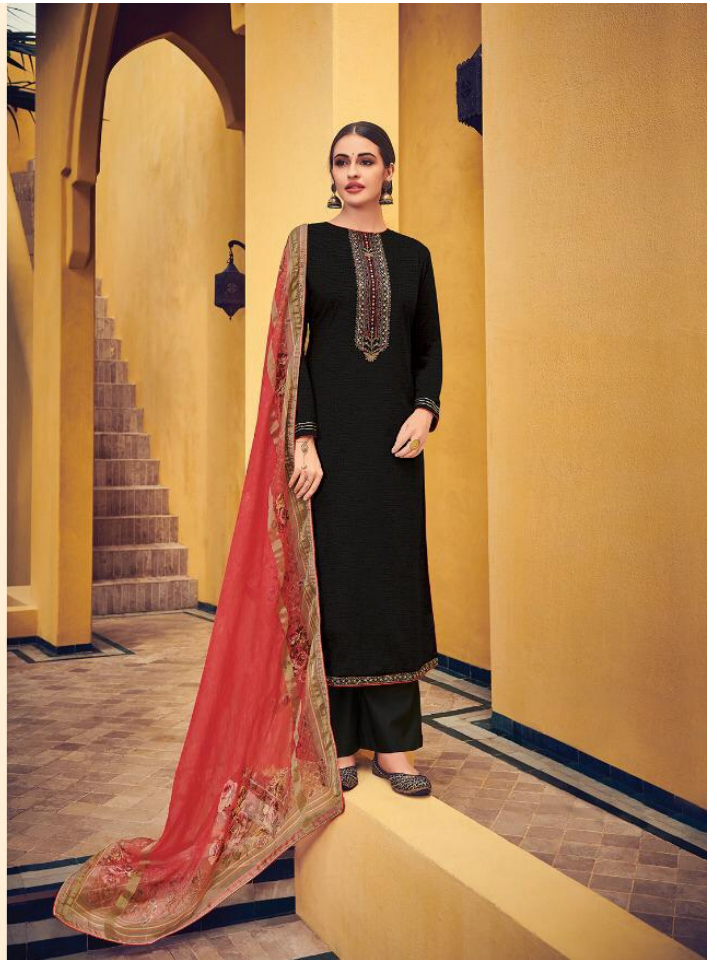




(Design no. 101)



(Design no. 102)





The background of the entire page is a close-up photograph of a red fabric, likely a saree, featuring gold-colored stripes and floral embroidery. The fabric is draped, creating soft folds and shadows. The gold stripes are horizontal and have a shimmering, metallic texture. The floral patterns consist of large, detailed roses in shades of pink and red, with green leaves and stems. The overall aesthetic is traditional and elegant.

VARSHA

KARIGARI

VOLUME-2

(Design no. 101)



(Design no. 102)



(Design no. 105)



(Design no. 106)



(Design no. 103)



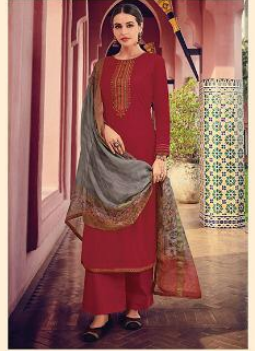
(Design no. 104)



(Design no. 107)



(Design no. 108)

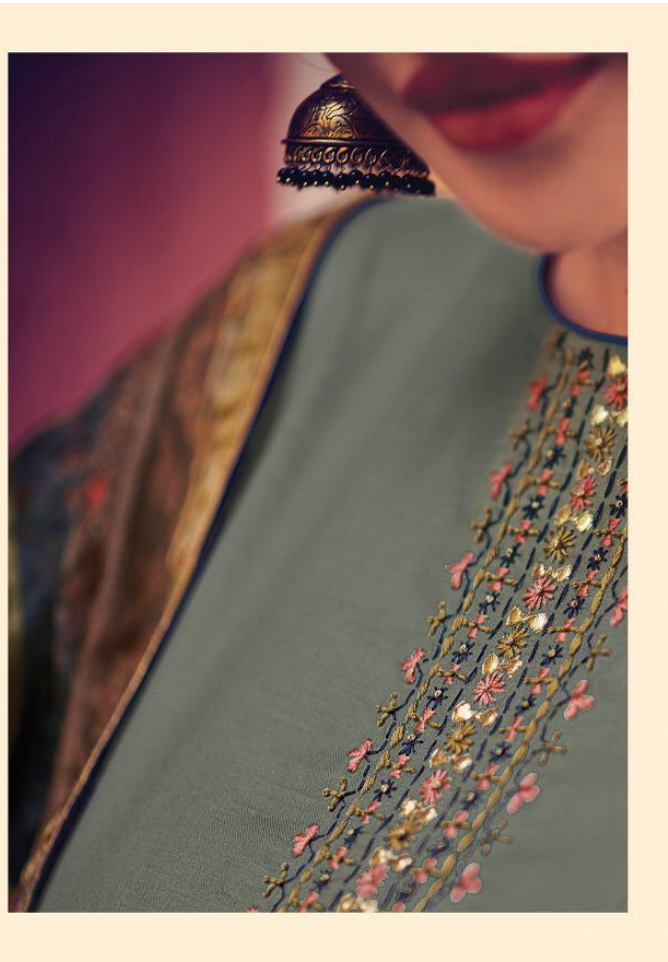






(Design no. 108)





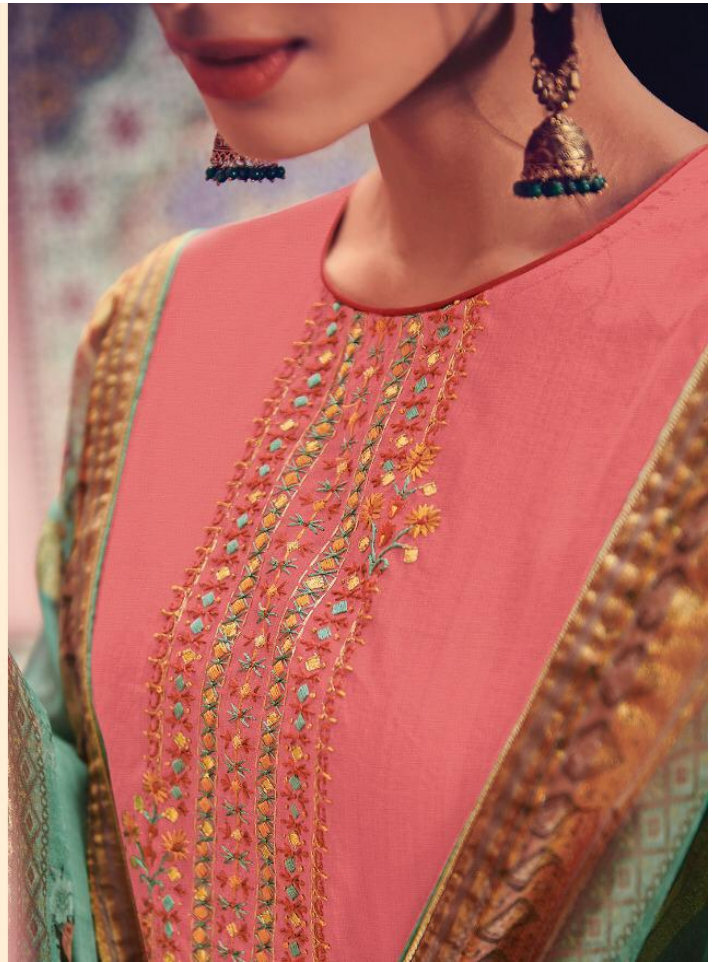


(Design no. 103)





(Design no. 107)





(Design no. 105)