

SARG®

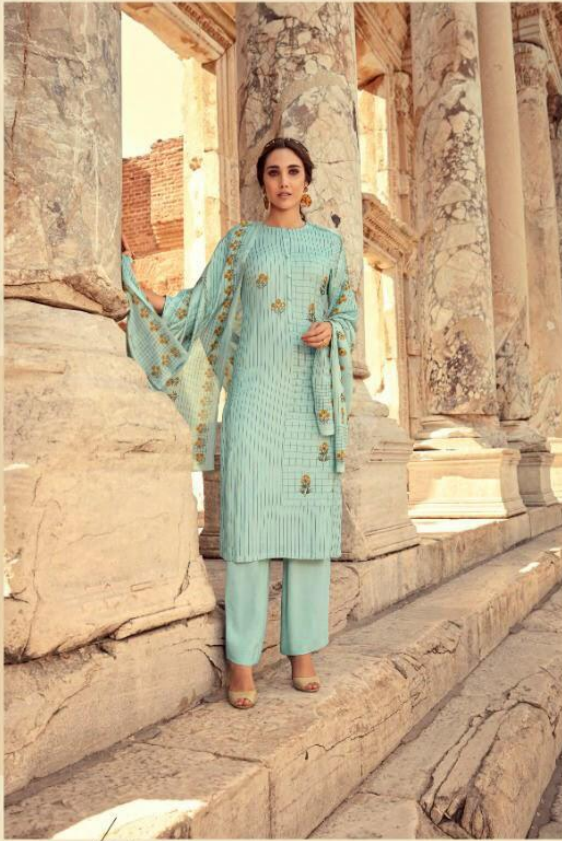
Flower  
Passage













SARG®

Flower Passage / 465



SARG®

Flower  
Passage



SARG®

Flower  
Passage



Flower  
Passage

SARG®



Flower Passage // 499



Flower Passage // 467



Flower Passage // 428



Flower Passage // 409



Flower Passage // 480



Flower Passage // 448



Flower Passage // 465



Flower Passage // 460



Flower Passage // 497



Flower Passage // 408



Flower Passage // 492



Flower Passage // 404





SARG®



"Lower Passage" / 497









SARG®

EPHESUS - ANCIENT CITY (TURKEY)



SARG®

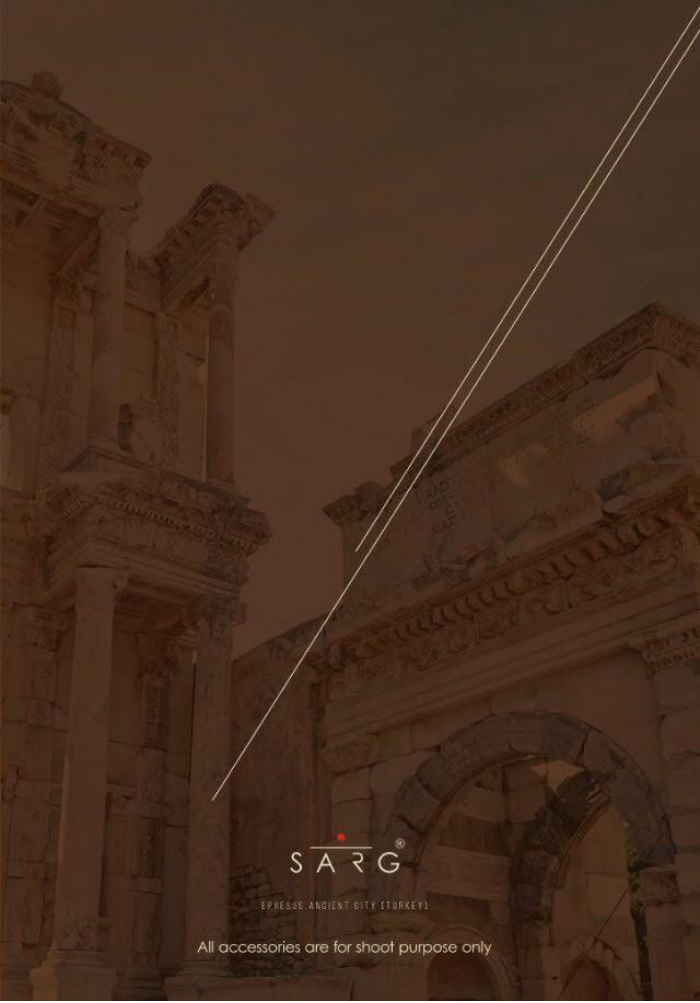


Flower Passage / 460









SARG®

EPHESUS ANCIENT CITY (TURKEY)

All accessories are for shoot purpose only

# Flower Passage

## RATE LIST

H S N CODE - 5208

| DESIGN NO | DESCRIPTION                                       | RATE   |
|-----------|---|--------|
| 499 - 497 |   |        |
| 467 - 465 | TOP - PASHMINA TWILL DIGITAL PRINT WITH HAND WORK |        |
| 428 - 404 | BOTTOM - PASHMINA TWILL                           | 1695/- |
| 460 - 448 | DUPATTA - SHAWL PASHMINA DIGITAL PRINTED          |        |
| 409 - 408 |   |        |
| 480 - 492 |   |        |

|             |              |           |
|-------------|--------------|-----------|
| TOTAL SUITS | TOTAL AMOUNT | AVG. RATE |
| 12          | 20340/-      | 1695/-    |







SARG

Flower Passage 409







Flower Passage / 467

