

Ganga™

Aani





8316



Ganga

8317



Ganga™

Aani



Ganga®



8318





8313



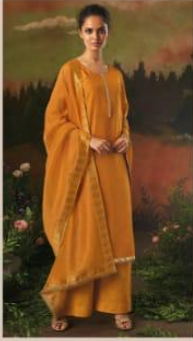
8314



8315



8316



8317



8318

Ganga®

AANI

PRODUCT DETAILS

TOP

BEMBERG SILK SOLID WITH HEAVY
EMROIDERY & JARI LACE BORDER
FOR DAMAN & SLEEVES

BOTTOM

SILK SATIN SOLID

DUPATTA

BANARASI SILK JACQUARD SOLID WITH
BOTH SIDE GOTA LACE

Ganga™
Fashions Private Limited





AANI – DESIGNER SALWAR SUITS

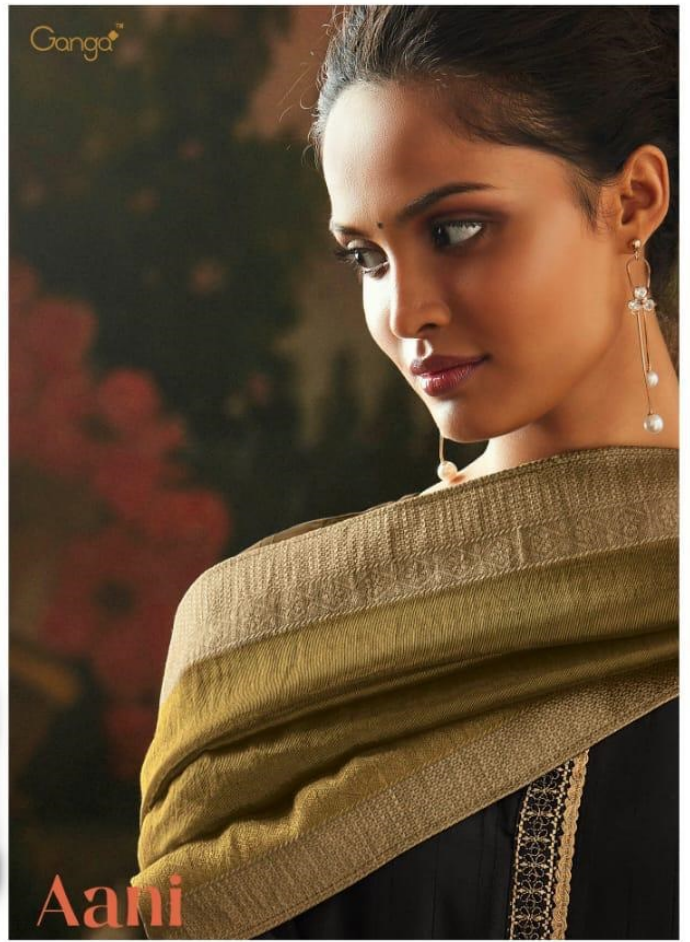
DESIGN NO.	CATALOG NAME	DESCRIPTION	PRICE
8313	AANI	Bemberg Silk Solid With Heavy Embroidery & Jari Lace Border For Daman & Sleeves	1950/-
8314	AANI	Bemberg Silk Solid With Heavy Embroidery & Jari Lace Border For Daman & Sleeves	1950/-
8315	AANI	Bemberg Silk Solid With Heavy Embroidery & Jari Lace Border For Daman & Sleeves	1950/-
8316	AANI	Bemberg Silk Solid With Heavy Embroidery & Jari Lace Border For Daman & Sleeves	1950/-
8317	AANI	Bemberg Silk Solid With Heavy Embroidery & Jari Lace Border For Daman & Sleeves	1950/-
8318	AANI	Bemberg Silk Solid With Heavy Embroidery & Jari Lace Border For Daman & Sleeves	1950/-

Total Pieces: 06

Total Amount: 11700(+ gst extra)

Ganga™

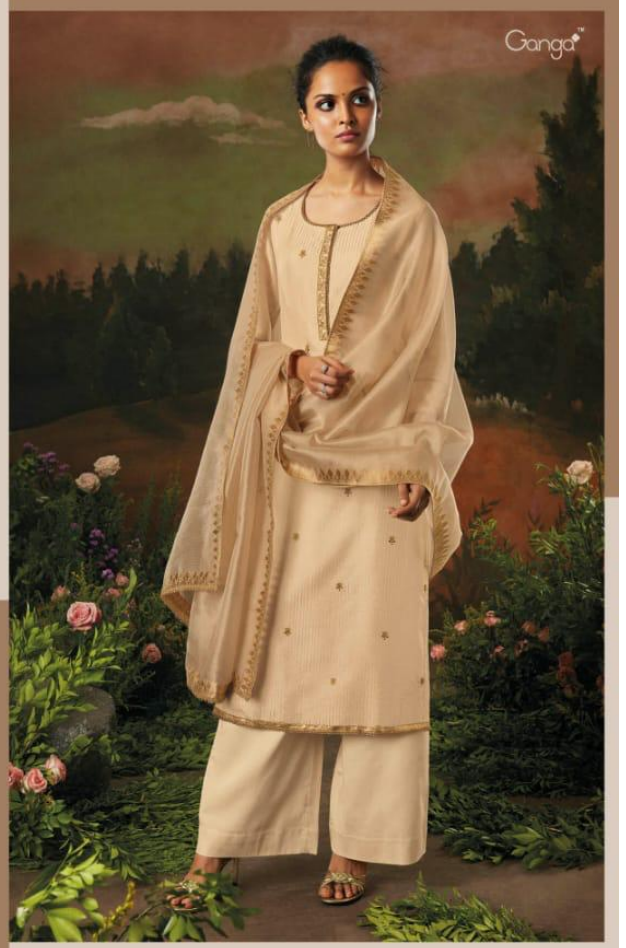
Aani







8313







8314



Ganga™



8315