

# SOGA

VOL-5



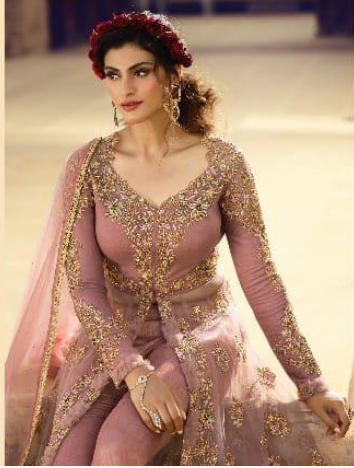
BY  
*Sampannnx*



Sangre

• 5504 •

— the princess povoski —



Sampson

• 5506 •

-the queen of the night-





Sangam 10

• 5504 •

Show off  
the queen in you  
with 2 B. Classic  
-celebrity-



# SOGA

VOL-5



BY  
*Sampannnx*

• 5501 •



• 5502 •



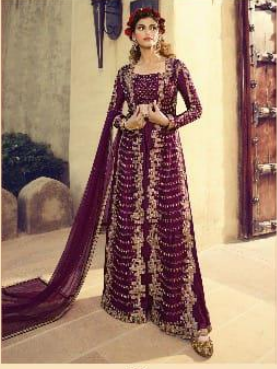
• 5505 •



• 5506 •



• 5503 •



• 5504 •



• 5507 •



Sampann





Rediscover the princess in you, with  
embellished formal in this  
saree collection.



Sangam  
• 5505 •



Express the pride in you  
with beign & bold  
— ruffled women





Samana

• 5501 •

affirm  
the dramatic you  
with this  
-be. At. I. blase-







Sangamini

• 5601 •



affirm the dramatic you  
with this  
-beautiful dress-



Sangam

• 5503 •

-the fashionista lla ...





Sangam

• 5504 •

Redeem  
the princess in you  
with embezzled  
floral in this  
uniquely styled





Express the pride in you  
with bright & bold  
-mustache- with it.





Sangre

• 5803 •

Introduce  
the fashionista in you  
with this splendid  
beauty.





Sampannnx

Let's define  
the Rightness for Rightness  
with  
- classic creations -



explore the dreamer in you  
with this  
-dazzling corpe-



## SAGA

D.NO	DETAILS	PRICE
5501	FEATURING THIS GORGEOUS BLACK PARTY WEAR GOWN IN BUTTERFLY NET WITH BEIGE SATIN INNER. EMBROIDERY WORK IS DONE WITH CODING, THREAD , BADLA, SPARKLE SEQUINS AND STONE EMBELLISHMENT . NECKLINE IS HIGHLIGHTED WITH CUTDANA EMBELLISHMENT. IT IS PAIRED WITH SOFT NET DUPATTA WHICH IS HEAVILY ENHANCED WITH STONE EMBELLISHMENT AND SANTOON BOTTOM.	3165/-
5502	THIS SET FEATURES AN EXQUISITE PASTEL GREEN PARTY WEAR JACKET IN BUTTERFLY NET WITH CROP TOP. EMBROIDERED WITH THREAD, CODING,BADLA, SEQUINS ,STONE & MIRROR WORK. IT IS PAIRED WITH ORGANZA SKIRT & SOFT NET DUPATTA WHICH IS ENHANCED WITH STONE EMBELLISHMENT .	2895/-
5503	FEATURING THIS RADIANT WINE HEAVY EMBROIDERED LONG JACKET IN SILK BASE IS TEAMED WITH MODAL SATIN SHARARA. EMBROIDERED WITH THREAD, BADLA, CODING, JARI, SEQUINS & STONE EMBELLISHMENT . IT IS PAIRED WITH SOFT NET DUPATTA WHICH IS HEAVILY ENHANCED WITH STONE EMBELLISHMENTS .	3385/-
5504	FEATURING THIS STUNNING DARK BEIGE ANARKALI SUIT IN BUTTERFLY NET EMBROIDERED WITH THREAD, BADLA,JARI,SEQUINS & LASER CUT FLOWERS.IT IS PAIRED WITH BANGLORI (LEHENGA AND PANTS). PANT IS ENHANCED BY BEAUTIFUL EMBROIDERY. IT ALSO COMES ALONG WITH SOFT ROUND NET DUPATTA WHICH IS HEAVILY ENHANCED WITH STONE WORK.	3595/-
5505	FEATURING THIS CHARCOAL GREY PARTY WEAR GOWN WHICH WILL GIVE YOU A DIVA LOOK. FEATURES AN EMBROIDERED BUTTERFLY NET WITH SANTOON INNER. EMBROIDERY IS BEAUTIFIED WITH CODING, JARI, BADLA, THREAD, SEQUINS, STONE EMBELLISHMENT. NECKLINE IS HAND EMBROIDERED IN MIRROR, BEAD & JARKAN . IT ALSO COMES ALONG WITH SOFT ROUND NET DUPATTA WHICH IS HEAVILY ENHANCED WITH STONE WORK AND SANTOON BOTTOM.	3275/-
5506	RAVISHING GREY PARTY WEAR GOWN IN BUTTERFLY NET BASE WITH SANTOON INNER. EMBROIDERY IS COMPLETED WITH CODING, JARI, BADLA, THREAD, SEQUINS, STONE & MIRROR EMBELLISHMENT.IT ALSO COMES ALONG WITH SOFT ROUND NET DUPATTA WHICH IS HEAVILY ENHANCED WITH STONE WORK AND SANTOON BOTTOM.	3345/-
5507	STUNNING YELLOW PARTY WEAR ANARKALI STYLE SUIT IN BUTTERFLY NET BASE EMBROIDERED WITH CODING, THREAD, BADLA & SEQUINS.IT IS PAIRED WITH BANGLORI (LEHENGA AND PANTS). PANT IS ENHANCED BY BEAUTIFUL EMBROIDERY. IT ALSO COMES ALONG WITH SOFT ROUND NET DUPATTA WHICH IS HEAVILY ENHANCED WITH STONE WORK.	3095/-
<b>AVERAGE PRICE PER PCS = 3250/-</b>		<b>22755/-</b>



introduce the fashionista to you  
with this subdued -beauty-



Sanyam

• 5804-5805 •

Rediscover  
the princess in you  
in the most elegant  
forms in these  
exclusive styles





# SOGA

VOL-5



BY  
*Sampannnx*