

A woman with dark hair pulled back, wearing a red Kantha saree with intricate gold and green embroidery. She is holding a white fabric that partially obscures her face. The background is a soft, warm-toned wall.

KANTHA

Heer

BY KIMORA

CONTEMPORARY INDIAN WEAR



9871





HEER

9878

A woman with dark hair pulled back, wearing a red Kantha saree with intricate gold and green embroidery. She is holding a white fabric that partially obscures her face. The background is a soft, warm-toned wall.

KANTHA

Heer

BY KIMORA

CONTEMPORARY INDIAN WEAR

HEER





HEER



9873



HEER



9874

A woman with dark hair pulled back, wearing a red Kantha saree with intricate gold and green embroidery. She is holding a white fabric that partially obscures her face. The background is a soft, warm-toned wall.

KANTHA

Heer

BY KIMORA

CONTEMPORARY INDIAN WEAR



9871



9872



9875



9876



9873



9874



9877



9878



9877



HEER

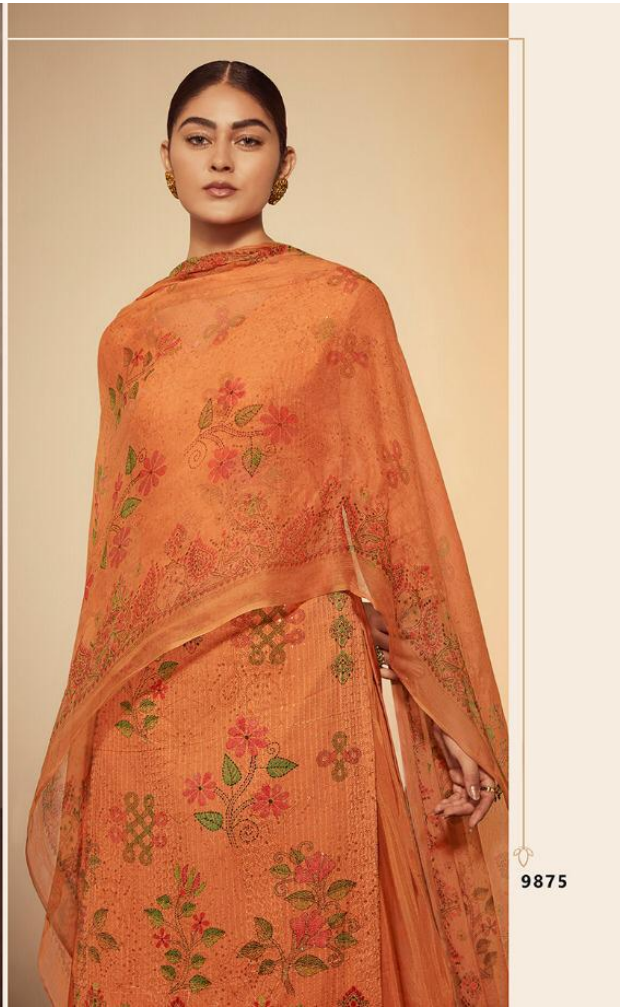


9872



HEER

HEER



9875



HEER

CONTEMPORARY INDIAN WEAR

Heera & Ranjha, a romantic folk tale epitomises the beauty and grace of Heer, our muse.

A charming and playful free spirits, Heer is a synonym for a loved one and an eternal inspiration for kimora as we craft colourful and intricate collections for Heer's of today, to be remembered fondly and cherished with love.

Team Kimora



HEER



HEER



KANTHA

VOLUME 58

TOP

PURE MUSLIN SILK WITH
EMBROIDERY AND DIGITAL PRINT

BOTTOM

PURE COTTON SATIN

DUPATTA

PURE BAMBER CHIFFON
WITH DIGITAL PRINT

DESIGN NO: 9871-9878

Heer

KIMORA

www.kimora.in



HEER

