

# Noorie

PURE PASHMINA COLLECTION

*Station Style*

Beauty begins the moment you decide to be yourself.



S - 456 - 006

*Artistic appeal*

Clothes means nothing until someone lives in them..

*Alfa*

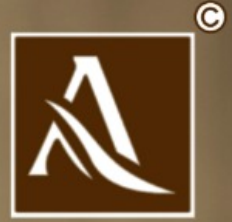


Noorie



S - 456 - 005





# Noorie

PURE PASHMINA COLLECTION



Noorie



S - 456 - 007

*Style icon*

Beauty comes in its style. In real,  
fashion as well as tradition,  
you have to keep yourself  
Update on the fashion front.

*© 2013*





S - 456 - 001



S - 456 - 002



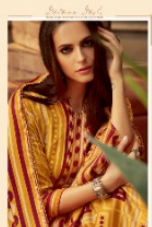
S - 456 - 003



S - 456 - 004



S - 456 - 005



S - 456 - 006



S - 456 - 007



S - 456 - 008





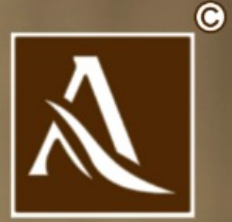


## *Splashes of style*

We invites you to explore  
the language of texture  
with original details,  
ruffles color electro style.  
your look gets better definition  
with just a little attention to detail.







# Noorie

PURE PASHMINA COLLECTION



*Beauty is you*

*Style is a way to say who you are without having to speak.*

*©*



Norie



S - 456 - 001

*Stylish elegance*

Fashion is no more the key to be presentable but it an essential to maintain in this ever-changing world in a trendy way putting forward your own style statement to the world.

*MS*

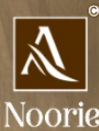


  
Noorie

S - 456 - 004

*Fashion Focus*

simplicity is the ultimate form of sophistication.



S - 456 - 002

*Signature*

Get new collection in your wardrobe. Now the Style,  
One step close to Perfection wear your  
look gets better definition with just a little Attention to Detail.

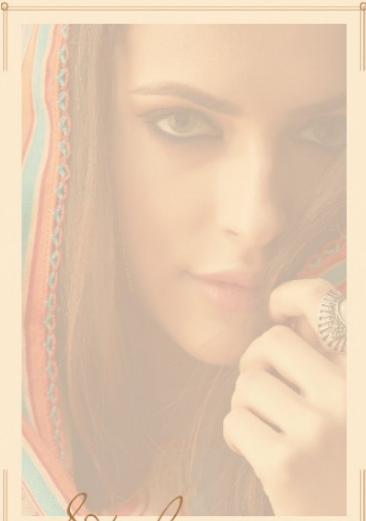


*Royal Elegance*



Noorie

S - 456 - 003



*Style icon*

A gorgeous dress with contemporary design would add freshness and stunning glamour to her look.

