



# Mehek-2

D.NO 5223 to 5228

TOP : JAM SATIN

BOTTOM : SEMILON

DUPATTA : CHINON WITH FOIL & EMBROIDERY WORK



  
MEGHA  
**Mehek-2**  
TOP : JAM SATIN  
BOTTOM : SEMILON  
DUPATTA : CHINON WITH  
FOIL & EMBROIDERY  
WORK  
DESIGN : 5224



MEGHA

*Mehak-2*

TOP : JAM SATIN

BOTTOM : SEMILON

DUPATTA : CHINON WITH  
FOIL & EMBROIDERY  
WORK

DESIGN : 5223



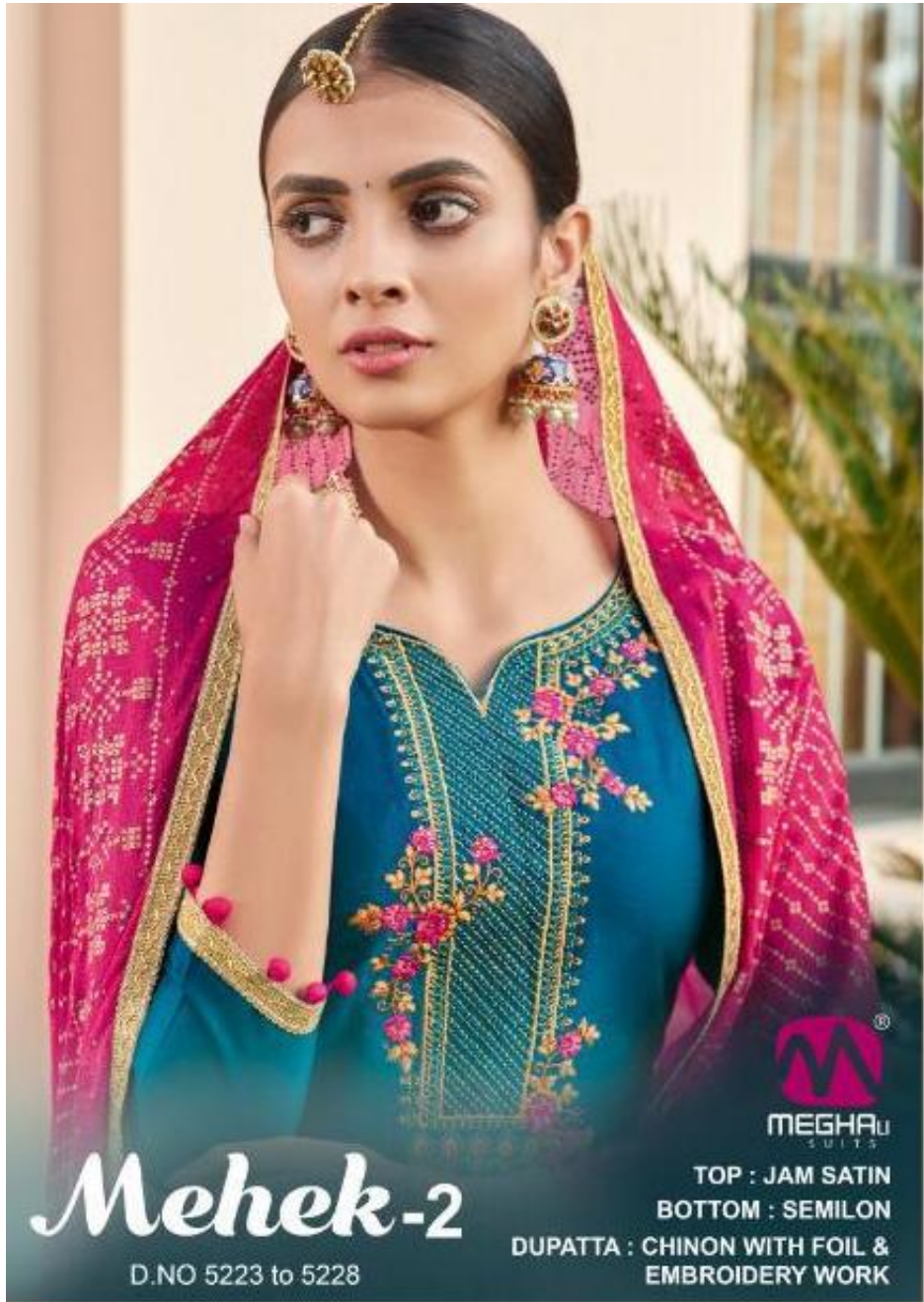
# Mehek-2

D.NO 5223 to 5228



TOP : JAM SATIN  
BOTTOM : SEMILON

DUPATTA : CHINON WITH FOIL &  
EMBROIDERY WORK



# Mehek-2

D.NO 5223 to 5228

TOP : JAM SATIN

BOTTOM : SEMILON

DUPATTA : CHINON WITH FOIL & EMBROIDERY WORK



MEGHA

*Mehak-2*

TOP : JAM SATIN

BOTTOM : SEMILON

DUPATTA : CHINON WITH  
FOIL & EMBROIDERY  
WORK

DESIGN : 5225





**Mehek-2**



**FABRICS DETAILS**

D . NO	TOP	BOTTOM	DUPATTA
5223	JAM SATIN	SEMILON	CHINON WITH FOIL & EMBROIDERY WORK
5224	JAM SATIN	SEMILON	CHINON WITH FOIL & EMBROIDERY WORK
5225	JAM SATIN	SEMILON	CHINON WITH FOIL & EMBROIDERY WORK
5226	JAM SATIN	SEMILON	CHINON WITH FOIL & EMBROIDERY WORK
5227	JAM SATIN	SEMILON	CHINON WITH FOIL & EMBROIDERY WORK
5228	JAM SATIN	SEMILON	CHINON WITH FOIL & EMBROIDERY WORK



D.NO.5223



D.NO.5224



D.NO.5225



D.NO.5226



D.NO.5227



D.NO.5228



# Mehek-2

D.NO 5223 to 5228



TOP : JAM SATIN  
BOTTOM : SEMILON  
DUPATTA : CHINON WITH FOIL & EMBROIDERY WORK





MEGHALI

*Mehek-2*

TOP : JAM SATIN

BOTTOM : SEMILON

DUPATTA : CHINON WITH

FOIL & EMBROIDERY

WORK

DESIGN : 5228





# Mehek-2

D.NO 5223 to 5228



TOP : JAM SATIN  
BOTTOM : SEMILON

DUPATTA : CHINON WITH FOIL &  
EMBROIDERY WORK



MEGHA

**Mehak-2**

TOP : JAM SATIN

BOTTOM : SEMILON

DUPATTA : CHINON WITH

FOIL & EMBROIDERY

WORK

DESIGN : 5226



**Megha-2**  
TOP : JAM SATIN  
BOTTOM : SEMILON  
DUPATTA : CHINON WITH  
FOIL & EMBROIDERY  
WORK  
DESIGN : 5227