



*Saheli*  
Vol-2

You are a portal, a doorway to the fantasy, the splendor, the magnificence of the world above. In such Saris, you're an angel.



SH-58



By dressing with such splendor, you tell the world that your tastes are immaculate and miles ahead of your contemporaries. A true monarch of style.



SH-59



SH-60



Fashions of yesterday may fade tomorrow, but there are some that last the passage of time. These are some such designs, custom-made for you.



In the turbulent world of today, your magnificence is the one constant. Little do they know your secret- the magic of your threads.



SH-61



*Saheli*  
Vol-2



SH-51  
(STAR SILK)



SH-52  
(STAR SILK)



SH-53  
(STAR SILK)



SH-57  
(STAR SILK)



SH-58  
(STAR SILK)



SH-59  
(STAR SILK)



SH-54  
(STAR SILK)



SH-55  
(STAR SILK)



SH-56  
(STAR SILK)

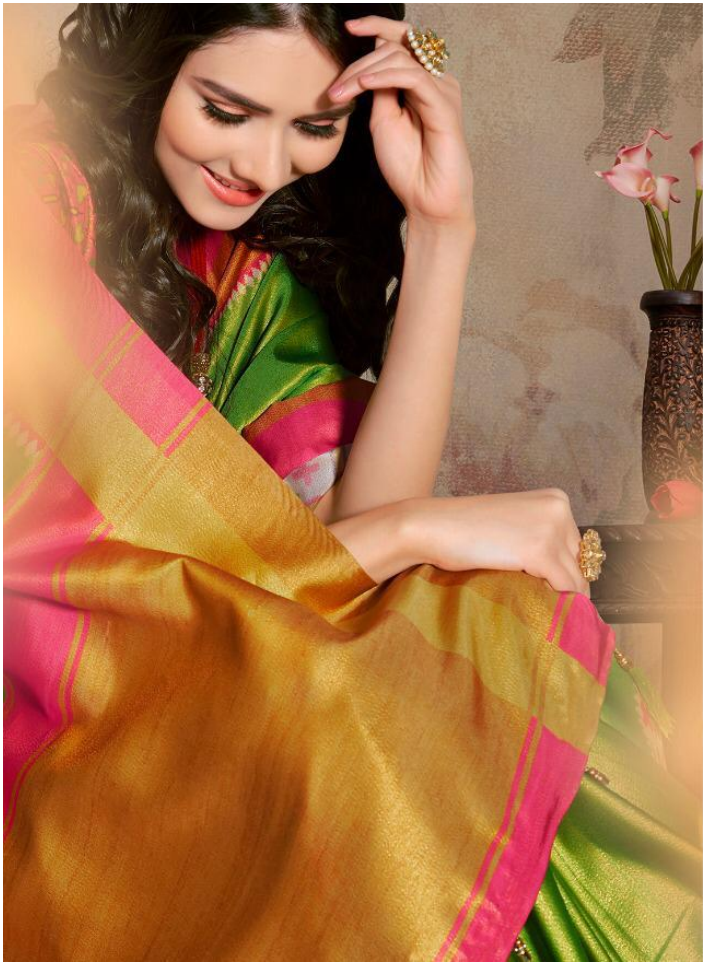


SH-60  
(STAR SILK)



SH-61  
(STAR SILK)









The sparkling glitter of innocence is best exemplified through these designs. Be the queen of virtue you were destined to be.



Of all the things in heaven and earth that man holds close to his heart, when you look as you do in these threads...he holds nothing dearer. Be above the rest.



SH-51





*Saheli*  
Vol-2



*Saheli*  
Vol-2



Class cannot be learned. It is inborn. These beautiful garments help you express your unmatched class to the world outside. Go, enchant everyone!



◆  
SH-54



The look you always dreamed of. Now it comes to life with these fascinating new Salwars. Be the empress you always wanted to be.



SH-55







When your Salwar has been designed with the most intricate precision by the most gifted artists, what do we call you but a masterpiece ?

