



kimora®

MORPANKH



1601



1602



1605

KIMORA®



1607



1603



1604



1606

MORPANKH

MORPANKH

VOL-16

DESIGN NO.
1601 to 1607

: TOP :

AUSTRALIAN SILK WITH ALL OVER BOOTI AND
EMBROIDERED SCALLOP BORDER ON HEM, SLEEVE

: DUPATTA :

CHINON DUPATTA WITH HEAVY EMBROIDERY
JAAL AND FOUR SIDED SCALLOP BORDER

: BOTTOM :

AUSTRALIAN SILK

KIMORA®

www.kimora.in





An initiative by
kimora[®]
Jewel in the crown

SUITS 2020 | VOLUME 16 | COMPLIMENTARY COPY | NOT FOR SALE



kimora[®]
MORPANKH





kimora®

MORPANKH



KIMORA®

MORPANKH

The designs were multi-utility &
we could see a few outfits that we could
wear up with other every day.



KIMORA®



— 1603 —





KIMORA®

—❖— 1602



KIMORA®

—❖ 1602 ❖—



KIMORA®

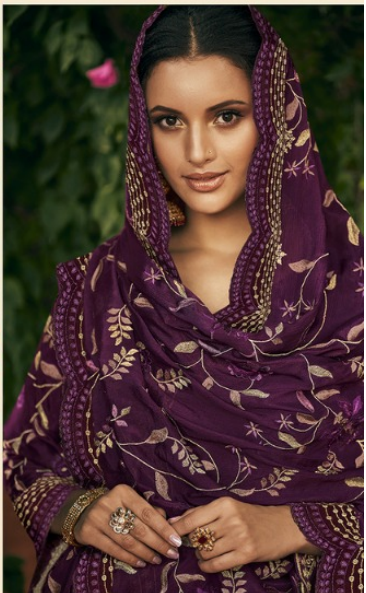


1603





KIMORA®



—◆◆◆ 1604 ◆◆◆—

KIMORA



— 1605 —





KIMORA®



KIMORA®

— ❖ 1606 ❖ —

