

nakkashi
L'UNIQUE FUSION DE L'ART ET DE LA MODE





nakkashi

Sheer
SOPHISTICATION

Sky colour net gown with
blue resham and sequin
work on it, paired with
self chiffon duppatta

D.NO.:- 3034



nakkashi



D.NO:- 3084



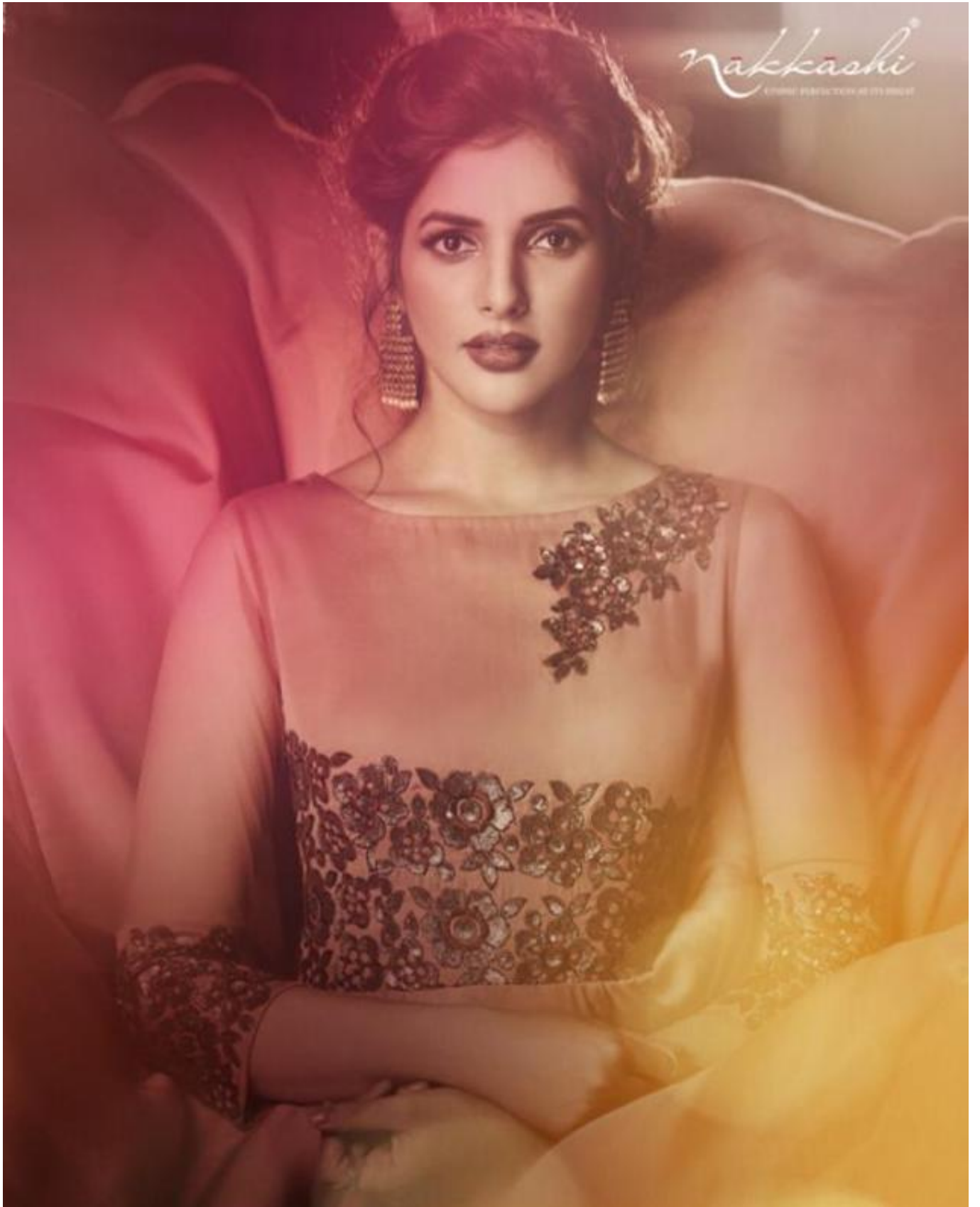
nakkashi



D.NO.:- 3085



nakkashi
L'UNIQUE FINESTYLE DE SES DRAPES



nakkashi



D.NO.:- 3086



style
SPLASH

Dusty cedar modal satin
gown with beige resham
work on it, paired with
self chiffon dupatta





D.NO.:- 3030



D.NO.:- 3031



D.NO.:- 3032



D.NO.:- 3033



D.NO.:- 3034



D.NO.:- 3035



D.NO.:- 3036

nakkashi
FLAIR

FLAIR

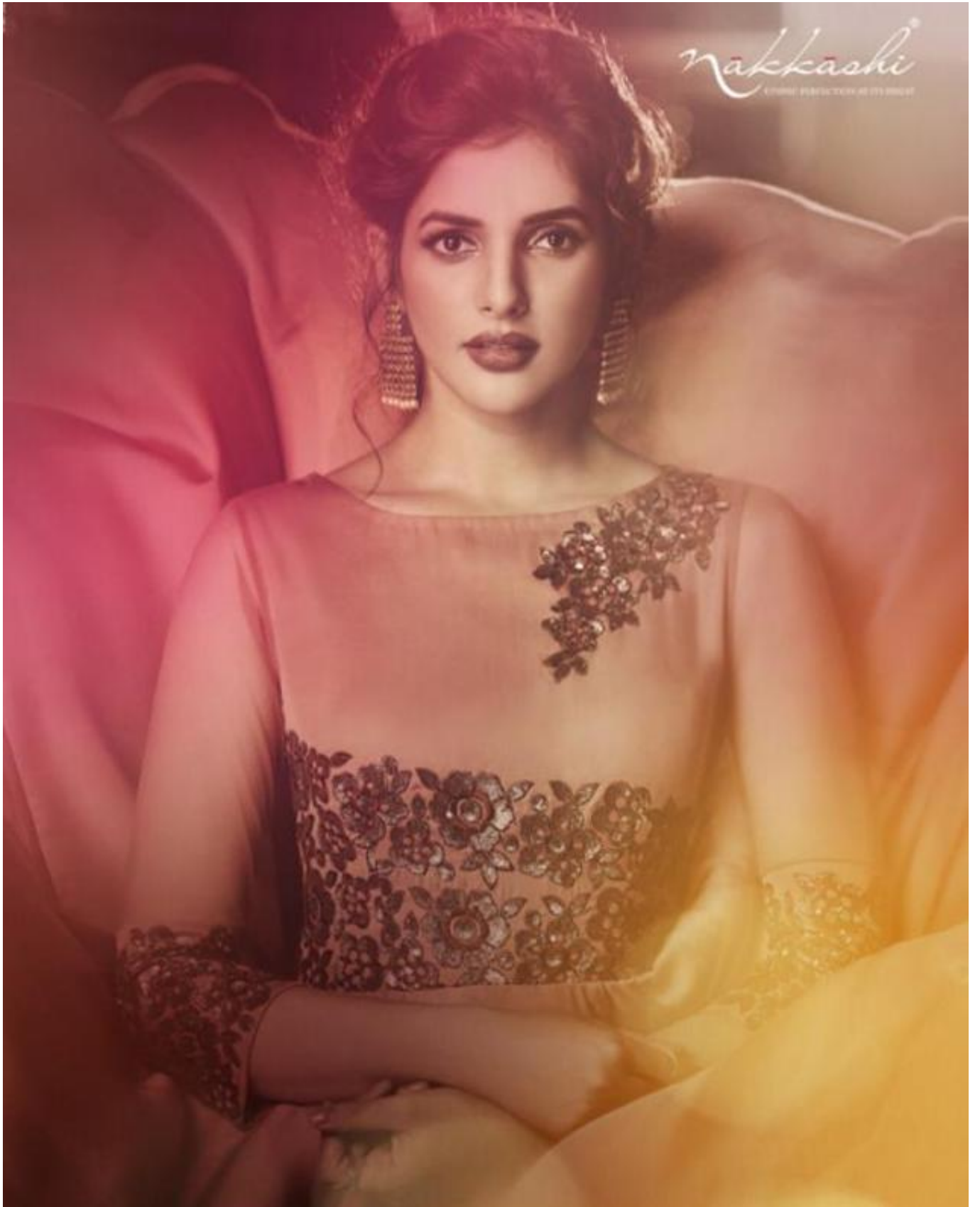
GOWN (FULL STICH)

SR.NO.	D.NO	Gown	Jacket	STICH	Dupatta	RATE	
1	3080	Blue Colour Modal Satin Fabrics	No	BUCRAM	Blue Colour Chiffon fabrics	2589	
2	3081	Dusty Cream Colour Modal Satin Fabrics	No	BUCRAM	Dusty Cream Colour Chiffon Fabrics	2479	
3	3082	Chickoo Colour Modal Satin Fabrics	No.	BUCRAM	Chickoo Colour Chiffon Fabrics	2449	
4	3083	Rose Dawn Colour Modal Satin Fabrics	No.	BUCRAM	Rose Dawn Colour Chiffon Fabrics	2509	
5	3084	Sky Colour Net Fabric	No.	BUCRAM	Sky Colour Chiffon Fabrics	2539	
6	3085	Light Dusty Liril Colour Modal Satin Fabrics	No.	BUCRAM	Light Dusty Liril Colour Chiffon Fabrics	2289	
7	3086	Dusty Cedar Colour Modal Satin Fabrics	No.	BUCRAM	Dusty Cedar Colour Chiffon Fabrics	2109	
		TOTAL				16963/-	
		AVERAGE				2423/-	

NOTE :-

Gown Are Ready To wear For Size 40" But Can Be Altered Uptill 36" To 42"

nakkashi
L'UNIQUE FINESTYLE DE SES DRAPES



nakkashi



D.NO.- 3030



Touch of
MODERNITY

Blue modal satin gown with
resham work on it, paired with
self colour chiffon dupatta



nakkashi

Sartorial
ELEGANCE

Dusty cream modal satin
gown with mirror work on
it, paired with self colour
chiffon dupatta

D.NO.:- 3081







nakkashi



Touch of
MODERNITY

Chickoo modal satin
gown with subtle resham
work on it, paired with
self colour chiffon
dupatta

D.NO.:- 3082





Sartorial
ELEGANCE

Rose dawn modal satin gown with sequin and resham work on it, paired with self colour chiffon duppatta

D.NO.:- 3083

nakkashi



D.NO.- 3083