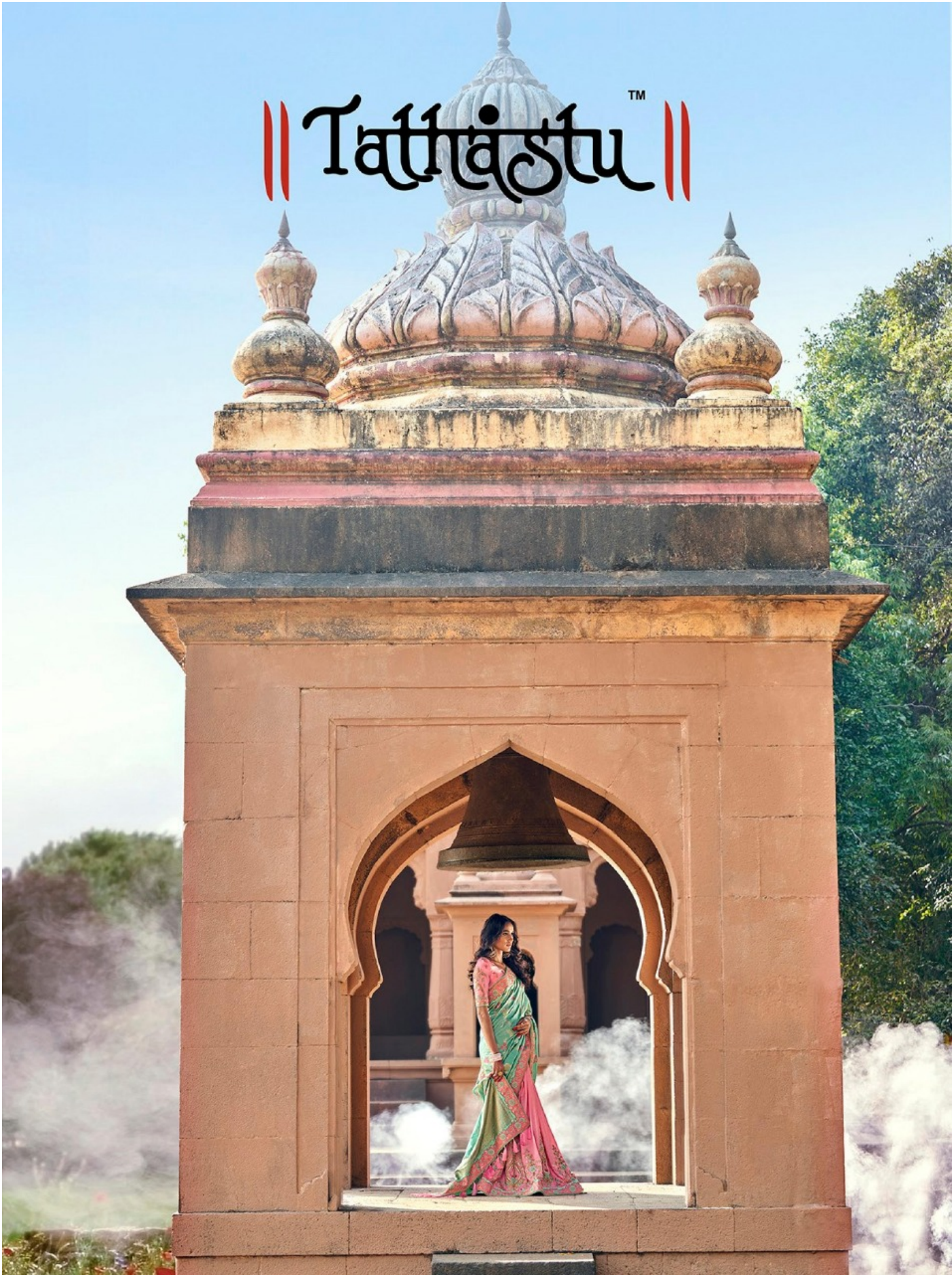


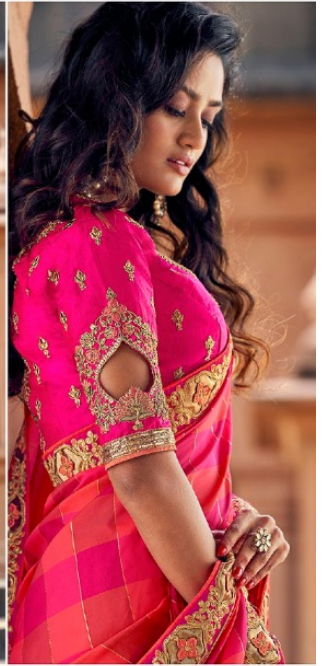
॥ Tattvaṣṭu™ ॥



|| Tattva ||
3803



|| Tattva ||



3809

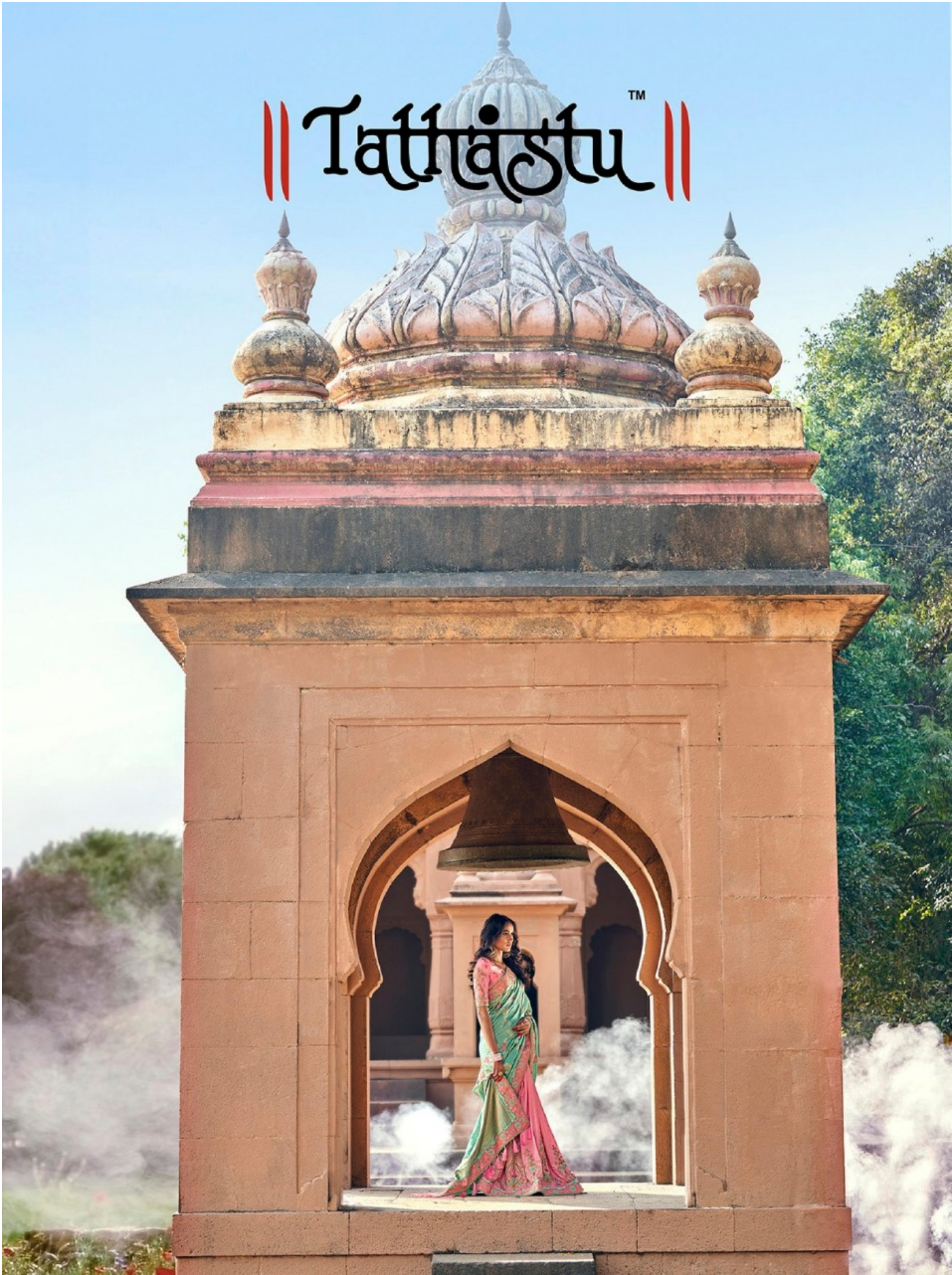
|| Tattva ||



3802



॥ Tattvaṣṭu™ ॥





|| TathavastuTM ||

DESIGN NO	PRICE
3801	3755/-
3802	3345/-
3803	3635/-
3804	3805/-
3805	3345/-
3806	3405/-
3807	3285/-
3808	3285/-
3809	2305/-
TOTAL	30165/-

|| Tattva ||

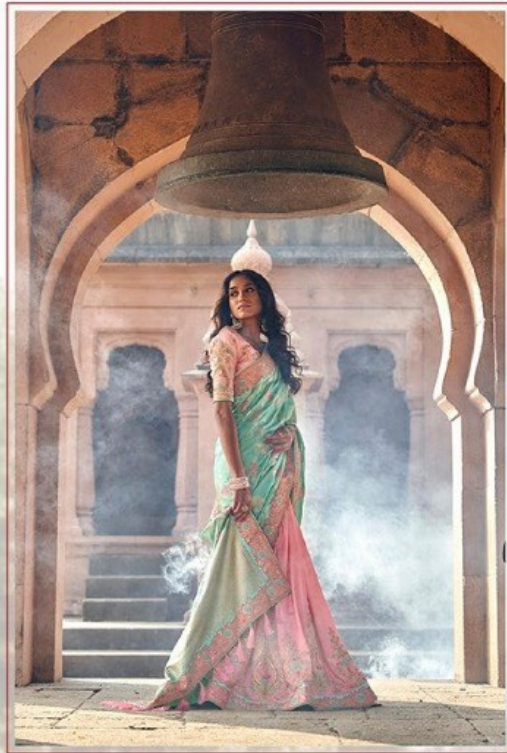
3807



A woman in a green and pink saree stands in a stone archway of a temple tower. The tower has a large bell hanging in the archway. The background is a soft, hazy landscape with trees and a bright sky. The text 'Tathastu' is overlaid on the image, flanked by two vertical red lines. Below it, the words 'COMING SOON' are written in a large, black, serif font.

|| Tathastu™ ||

COMING SOON



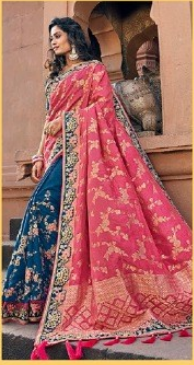
॥ Tathāstu ॥

॥ Tathāstu ॥

n

astu

n



3801



3802



3803



3804



3805



3806



3807



3808



3809





3804



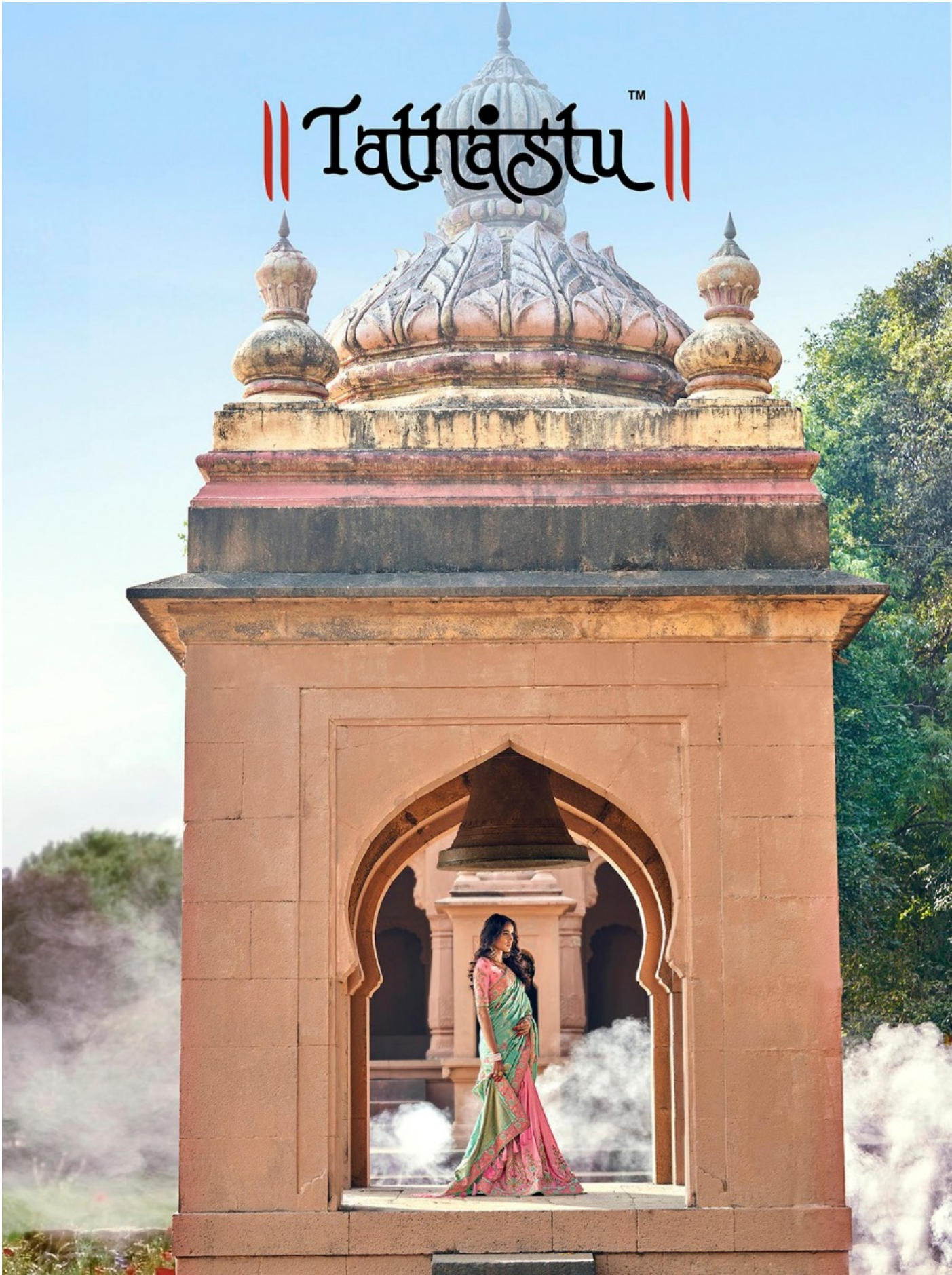
|| Tattva ||



3806



॥ Tattvaṣṭu™ ॥







|| Tattvamsu ||
3801





॥ Tatheṣṭu ॥