

Maadhav
SYNTHETICS



ELITE

Maadhav
SYNTHETICS



ELITE



17501



17502



17503



17504



17505



17506



17507



17508



17501



Maadhav
SYNTHETICS
ELITE






FABRIC DETAIL

TOP : PURE JAM SATIN WITH DESIGNER EMBROIDERY.

DUPATTA : PURE NAZNEEN CHIFFON DUPATTA.

BOTTOM : SOLID COTTON.




Maadhav
SYNTHETICS

A NEW BRAND
By

Sargam[®] Prints
Mfg. of Exclusive Dress Materials



Maadhav
SYNTHETICS



Maadhav
SYNTHETICS

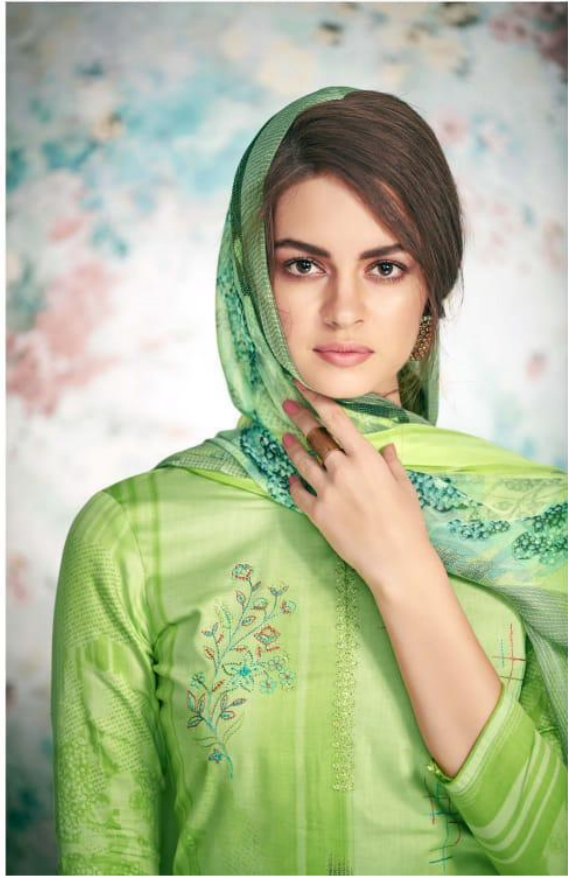


ELITE



17508





17502

Madhav
SYNTHETICS



17504





17503



Moodhav
SYNTHETICS
ELITE





17505



17506



Maadhav
SYNTHETICS



Madhav
SYNTHETICS



17507

