

A woman with long, dark, wavy hair is the central figure. She is wearing a peach-colored kurta with green diamond-shaped embroidery scattered across the fabric. A vertical line of green chain-link embroidery runs down the center, featuring a large green tassel. The kurta also has green floral embroidery near the hem and neckline. She is wearing large, ornate gold earrings with blue and green details. She is holding a thin, light-colored branch in her right hand. The background is a lush green forest with trees and foliage. The text 'VINK WEAVES' is overlaid in the top right corner, with 'VINK' in a stylized font and 'WEAVES' in a bold, serif font. A small 'TM' trademark symbol is next to 'VINK'.

VINKTM
WEAVES



VINK™



742



VINKTM
WEAVES







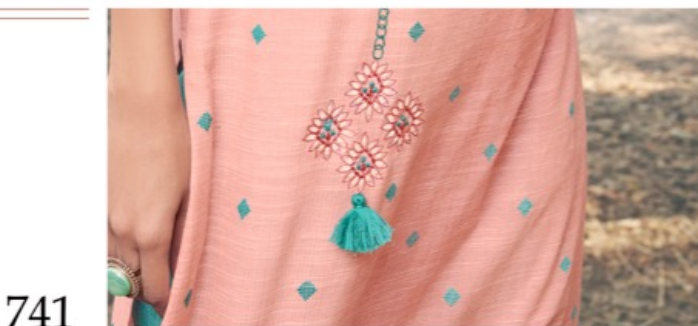
VINK™



747



VINK™



741





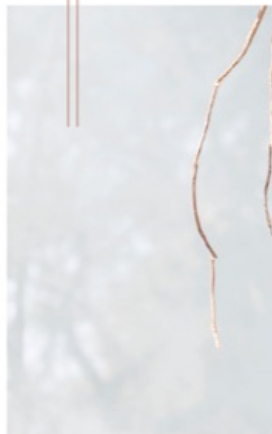
VINK™







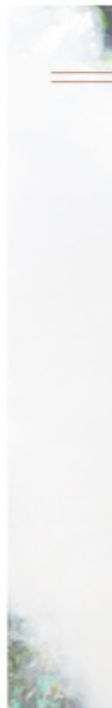
VINK™



743



VINK™



745





741



742



743



744



VINKTM

Made in India

*Complimentary copy not for sale



745



746



747

VINKTM
WEAVES

A woman with long, dark, wavy hair is the central figure. She is wearing a peach-colored kurta with green diamond-shaped embroidery scattered across the fabric. The front of the kurta features a vertical line of green chain-link embroidery, with clusters of red and green floral embroidery at the top and bottom. A large green tassel hangs from the center of this chain. She is also wearing gold-colored earrings with blue and green beads. She is standing outdoors, with her right hand resting on a tree branch. The background is a lush green forest with sunlight filtering through the trees.

VINKTM
WEAVES



