

salwar
kameez

WEAR

T H E
A R T
O F
A T T
R A C
T I O N

YOUR BRAND



Mega Sale

Kimora Fashion Pvt. Ltd.**"KIMORA-1"****Description**

Design No	Dupatta	Top	Bottom
K-001	Pure bemberg dupatta with heavy embroidery and hand work	Pure silk with Embroidery and hand work	Pure cotton satin
K-002	Pure bemberg dupatta with heavy embroidery and hand work	Pure silk with Embroidery and hand work	Pure cotton satin
K-003	Pure bemberg dupatta with heavy embroidery and hand work	Pure silk with Embroidery and hand work	Pure cotton satin
K-004	Pure bemberg dupatta with heavy embroidery and hand work	Pure silk with Embroidery and hand work	Pure cotton satin
K-005	Pure bemberg dupatta with heavy embroidery and hand work	Pure silk with Embroidery and hand work	Pure cotton satin
K-006	Pure bemberg dupatta with heavy embroidery and hand work	Pure silk with Embroidery and hand work	Pure cotton satin
K-007	Pure bemberg dupatta with heavy embroidery and hand work	Pure silk with Embroidery and hand work	Pure cotton satin

CRYSTALINE

D.NO.	FABRICS DETAILS
F-1001	LONG KOTI :- HEAVY NET INNER :- HEAVY JAPAN SATIN LENGHA :- HEAVY JAPAN SATIN INNER :- HEAVY SANTOON DUPATTA :- NAZMIN CHIFFON
F-1002	PARTY GOWN :- FANCY FABRIC+NET INNER :- HEAVY SANTOON BOTTOM :- HEAVY SANTOON DUPATTA :- HEAVY NET
F-1003	KOTI :- HEAVY VALVET LENGHA :- FANCY FABRIC INNER :- HEAVY SANTOON DUPATTA :- HEAVY NET
F-1004	PARTY GOWN :- HEAVY NET INNER :- HEAVY SANTOON BOTTOM :- HEAVY SANTOON DUPATTA :- HEAVY NET
F-1005	LONG KOTI :- HEAVY NET INNER :- HEAVY JAPAN SATIN LENGHA :- FANCY FABRIC INNER :- HEAVY SANTOON DUPATTA :- HEAVY NET
	AVERAGE RATE

D.NO.	FABRICS DETAILS
S-901	LONG KOTI :- HEAVY NET INNER :- HEAVY JAPAN SATIN LENGHA/PLAZO :- HEAVY NET INNER :- HEAVY JAPAN SATIN BOTTOM :- HEAVY SANTOON DUPATTA :- NAZMIN CHIFFON
S-902	PARTY GOWN :- HEAVY SHADED NET INNER :- HEAVY JAPAN SATTIN BOTTOM :- HEAVY SANTOON DUPATTA :- NAZMIN CHIFFON
S-903	KOTI :- HEAVY NET INNER :- HEAVY JAPAN SATIN PLAZO :- HEAVY NET INNER :- HEAVY JAPAN SATIN DUPATTA :- NAZMIN CHIFFON
S-904	KOTI :- HEAVY NET INNER :- HEAVY JAPAN SATIN LENGHA :- HEAVY NET SHORT SKIRT :- HEAVY NET INNER :- HEAVY JAPAN SATIN DUPATTA :- NAZMIN CHIFFON
S-905	PARTY GOWN :- HEAVY NET INNER :- HEAVY JAPAN SATIN BOTTOM :- HEAVY SANTOON DUPATTA :- NAZMIN CHIFFON
S-906	KOTI :- HEAVY NET INNER :- HEAVY JAPAN SATIN PLAZO :- HEAVY NET INNER :- HEAVY JAPAN SATIN DUPATTA :- NAZMIN CHIFFON
S-907	PARTY GOWN :- HEAVY NET INNER :- HEAVY JAPAN SATIN BOTTOM :- HEAVY SANTOON DUPATTA :- NAZMIN CHIFFON
S-908	KOTI :- HEAVY NET INNER :- HEAVY JAPAN SATIN PLAZO :- HEAVY NET INNER :- HEAVY JAPAN SATIN DUPATTA :- NAZMIN CHIFFON
	AVERAGE RATE



Rashi PR
THE WAY TO CRI

Hadipa
Sar

PRICE LIST

S.NO.	PRODUCT DETAIL	D.NO.	
1	<ul style="list-style-type: none"> • TOP :- SATIN GEORGETTE • BOTTOM :- GEORGETTE WITH HEAVY WORK • INNER :- SANTUN • DUPATTA :- NAJNEEN WITH DIAMOND WORK 	D.NO.4141	
2	<ul style="list-style-type: none"> • TOP :- SATIN GEORGETTE • BOTTOM :- GEORGETTE WITH HEAVY WORK • INNER :- SANTUN • DUPATTA :- NAJNEEN WITH DIAMOND WORK 	D.NO.4142	
3	<ul style="list-style-type: none"> • TOP :- SATIN GEORGETTE • BOTTOM :- GEORGETTE WITH HEAVY WORK • INNER :- SANTUN • DUPATTA :- NAJNEEN WITH DIAMOND WORK 	D.NO.4143	
4	<ul style="list-style-type: none"> • TOP :- SATIN GEORGETTE • BOTTOM :- GEORGETTE WITH HEAVY WORK • INNER :- SANTUN • DUPATTA :- NAJNEEN WITH DIAMOND WORK 	D.NO.4144	
5	<ul style="list-style-type: none"> • TOP :- SATIN GEORGETTE • BOTTOM :- GEORGETTE WITH HEAVY WORK • INNER :- SANTUN • DUPATTA :- NAJNEEN WITH DIAMOND WORK 	D.NO.4145	
6	<ul style="list-style-type: none"> • TOP :- SATIN GEORGETTE • BOTTOM :- GEORGETTE WITH HEAVY WORK • INNER :- SANTUN • DUPATTA :- NAJNEEN WITH DIAMOND WORK 	D.NO.4146	

DCAT-47

D.NO:	PRODUCT DETAILS	TOP-L	BUST
D4520A	GEORGETTE TOP+SLEEVES WITH EMB. & STONE WORK, SANTOON INNER , FULL STITCH GEORGETTE SHARARA WITH EMB.WORK, SANTOON INNER , CHIFFON DUPATTA WITH LACE & STONE WORK .	40"	FREE SIZE
D4521A	GEORGETTE TOP+SLEEVES WITH EMB.WORK, SANTOON INNER , FULL STITCH GEORGETTE SHARARA WITH EMB.WORK, SANTOON INNER , CHIFFON DUPATTA WITH LACE & STONE WORK .	40"	FREE SIZE
D4522A	GEORGETTE TOP+SLEEVES WITH EMB. & STONE WORK, SANTOON INNER , FULL STITCH GEORGETTE SHARARA WITH EMB.WORK, SANTOON INNER , CHIFFON DUPATTA WITH LACE & STONE WORK .	40"	FREE SIZE
D4523A	GEORGETTE TOP+SLEEVES WITH EMB. & STONE WORK, SANTOON INNER , FULL STITCH GEORGETTE SHARARA WITH EMB LACE, SANTOON INNER , CHIFFON DUPATTA WITH LACE & STONE WORK .	40"	FREE SIZE
D4524A	GEORGETTE TOP+SLEEVES WITH EMB. & STONE WORK, SANTOON INNER , FULL STITCH GEORGETTE SHARARA WITH EMB LACE, SANTOON INNER , CHIFFON DUPATTA WITH LACE & STONE WORK .	40"	FREE SIZE
D4525A	GEORGETTE TOP+SLEEVES WITH EMB. & STONE WORK, SANTOON INNER , FULL STITCH GEORGETTE SHARARA WITH LACE WORK, SANTOON INNER , CHIFFON DUPATTA WITH LACE & STONE WORK .	40"	FREE SIZE

KIMORA



K-1405



KIMORA



K-1402



salwar
kameez

WEAR

T H E
A R T
O F
A T T
R A C
T I O N

YOUR BRAND



Mega Sale

JINAAM'S



8952





1001



FASHION
FOCUS



1004

FASHION
FOCUS



1003

FASHION
FOCUS



1001





FASHION
FOCUS

1004

SybellaTM
CREATIONS



S-904

FASHION
FOCUS



1002

FASHION
FOCUS



1002



DIFFERENT CULTURES COME TOGETHER IN A TRIBUTE TO FASHION'S BIGGEST MOMENT THIS SEASON.

4544



ayaan™
by
VIPUL
FASHION FOREVER



ayaan™
by
VIDHI
FASHION FOREVER

EARTHY TONES & NATURAL FABRICS MAKE
FOR SOFT CLASSIC LOOK TO YOUR BEAUTY.

4546

ayaan™
by
viDUL
FASHION FOREVER

POWERFUL PRINT & PATTERNS A FASHION TREND FOR THE DARING FASHIONISTA

4545





ayaan
by
vidual
FASHION FOREVER

THIS SPARKLING BEAUTY OF DRESS WILL WORK THEIR
MAGIC ON EVERYTHING IN YOUR WARDROBE.



Rashi PR
THE WAY TO CRI

Hadipa
Sar

PRICE LIST

S.NO.	PRODUCT DETAIL	D.NO.	
1	<ul style="list-style-type: none"> • TOP :- SATIN GEORGETTE • BOTTOM :- GEORGETTE WITH HEAVY WORK • INNER :- SANTUN • DUPATTA :- NAJNEEN WITH DIAMOND WORK 	D.NO.4141	
2	<ul style="list-style-type: none"> • TOP :- SATIN GEORGETTE • BOTTOM :- GEORGETTE WITH HEAVY WORK • INNER :- SANTUN • DUPATTA :- NAJNEEN WITH DIAMOND WORK 	D.NO.4142	
3	<ul style="list-style-type: none"> • TOP :- SATIN GEORGETTE • BOTTOM :- GEORGETTE WITH HEAVY WORK • INNER :- SANTUN • DUPATTA :- NAJNEEN WITH DIAMOND WORK 	D.NO.4143	
4	<ul style="list-style-type: none"> • TOP :- SATIN GEORGETTE • BOTTOM :- GEORGETTE WITH HEAVY WORK • INNER :- SANTUN • DUPATTA :- NAJNEEN WITH DIAMOND WORK 	D.NO.4144	
5	<ul style="list-style-type: none"> • TOP :- SATIN GEORGETTE • BOTTOM :- GEORGETTE WITH HEAVY WORK • INNER :- SANTUN • DUPATTA :- NAJNEEN WITH DIAMOND WORK 	D.NO.4145	
6	<ul style="list-style-type: none"> • TOP :- SATIN GEORGETTE • BOTTOM :- GEORGETTE WITH HEAVY WORK • INNER :- SANTUN • DUPATTA :- NAJNEEN WITH DIAMOND WORK 	D.NO.4146	





R
Rashi PRINTS



4142



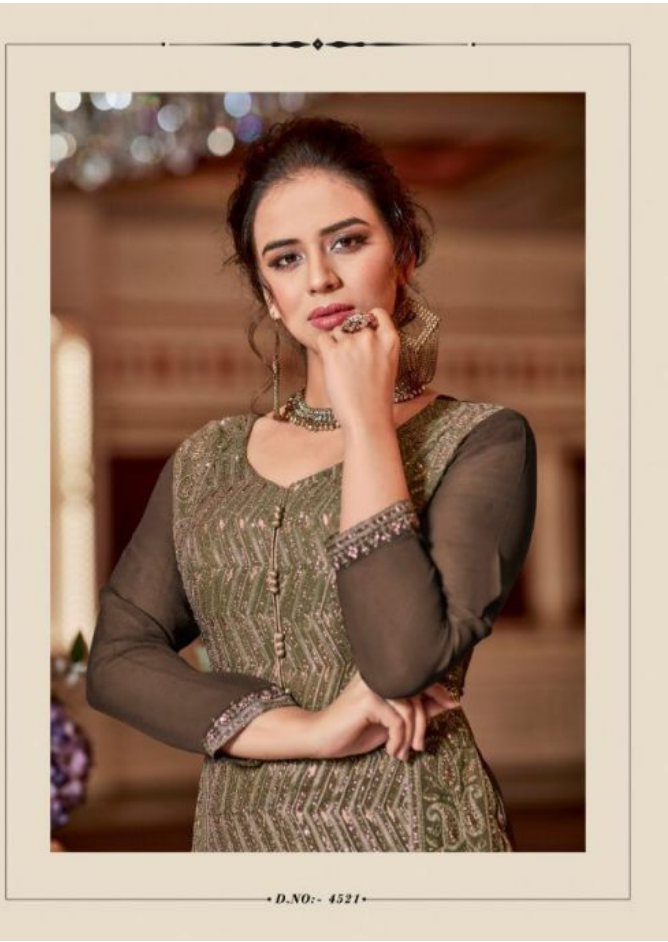
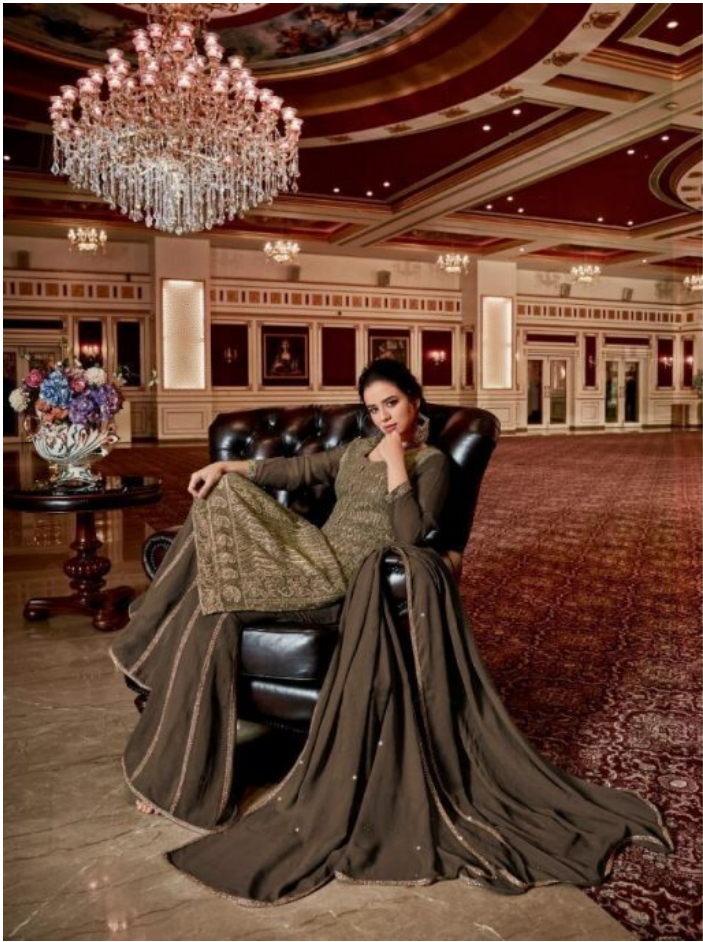






•D.NO:- 4522•







D.NO:- 4521





* * * * *



* * * * *

K-007

kimora®





KIMORA

K-1403

kimora[®]

VOL- 14

Aasmi

DESIGN NO.

1401 TO 1408

TOP:

PURE GEORGETTE WITH HEAVY LAKHNAVI
EMBROIDERY INNER HEAVY SANTON

DUPATTA:

ORGANZA WITH HEAVY EMBROIDERY

BOTTOM:

HEAVY SHENTOON

www.kimora.in







KIMORA



K-1408

KIMORA



K-1404

