



Nusrat-e- Patiyala

Patiyala Style Never Dies



Nusrat-e- Patiyala

Patiyala Style Never Dies



Nusrat-e- Patiyala



SAREE BRINGS FLORAL PATTERNS ON FINEST FABRIC, WHICH TENDS TO ENHANCE THE QUALITY OF IT. NOTICE HOW CHANGE WORTHWHILE EXPERIENCE THE ENJOY OF RICH BLEND IN SOFT BEIGE DESIGN.

I 609 004





WEAVE LADY PATTERNS OF FABRIC FINISH BEING EVEN IN DISPLAY STYLE WITH COMFORTABLE WORKWOMANLY DIFFERENCE IN THE ENJOYABLE REGIONAL BLEND SOFT RESER DESIGN

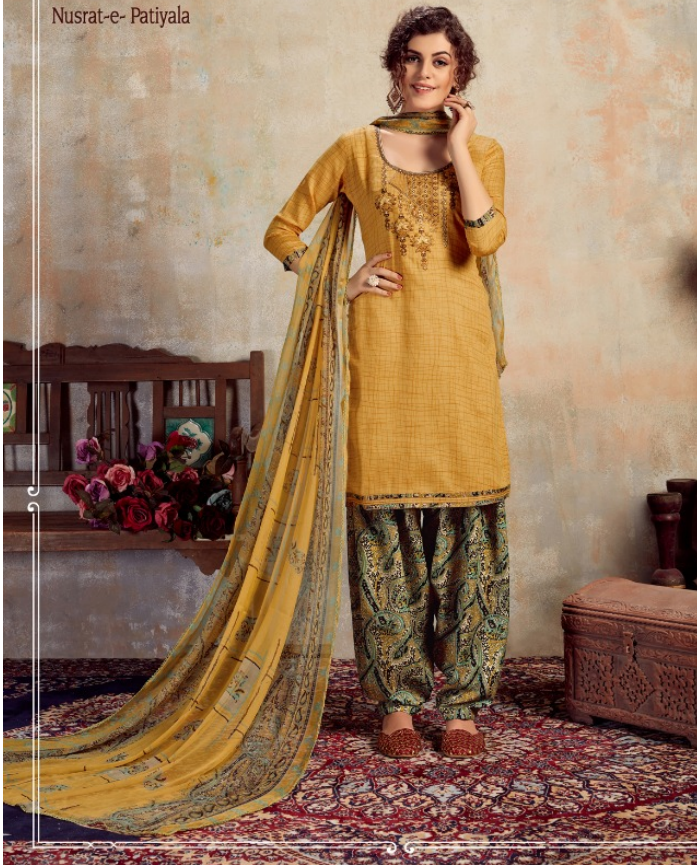
Nusrat-e- Patiyala



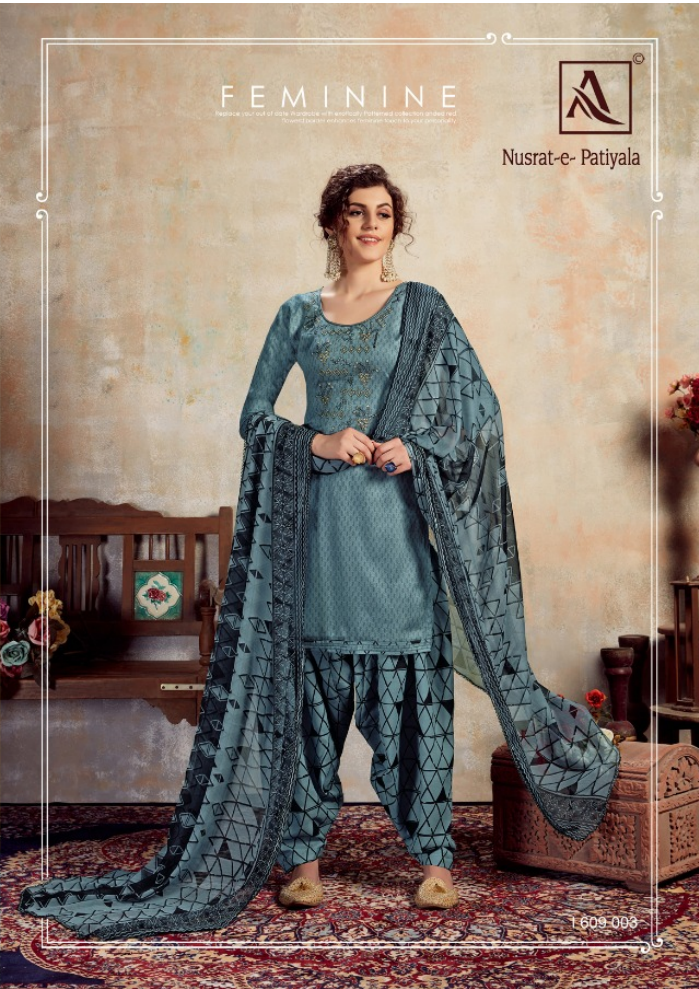
I 609 006



Nusrat-e- Patiyala



1609 001



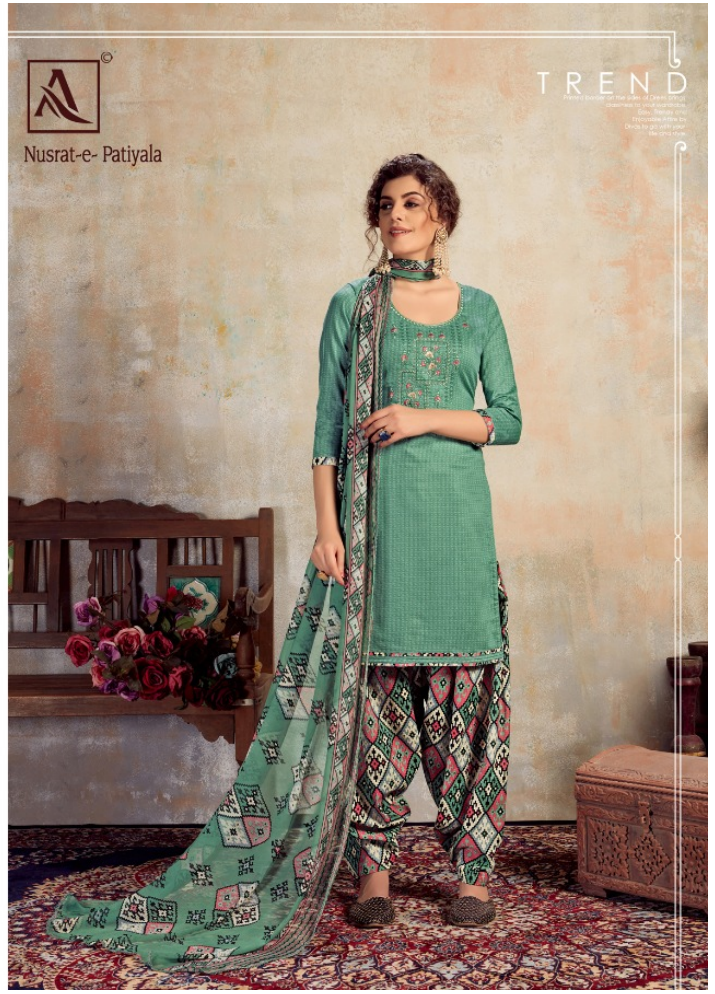
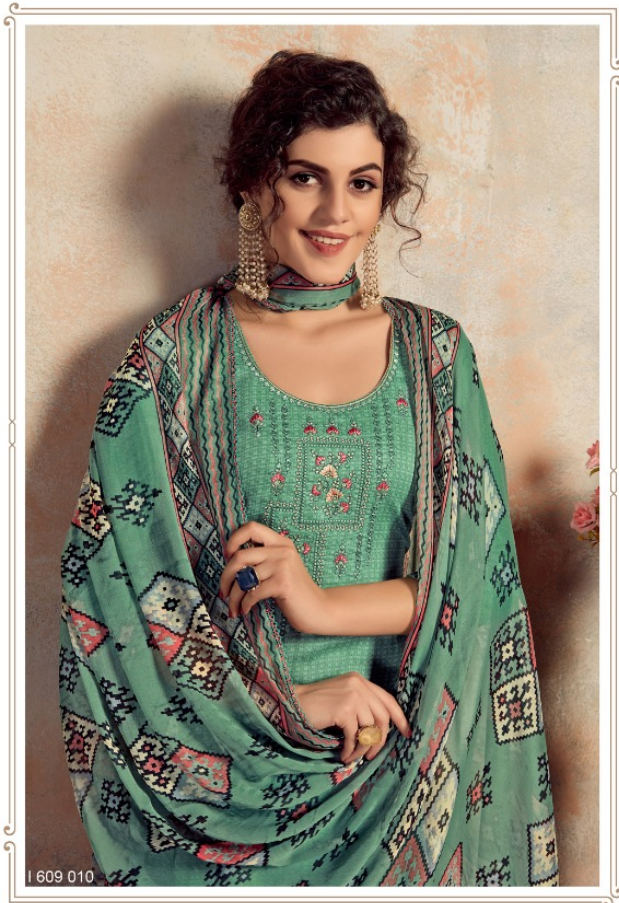
FEMININE



Nusrat-e- Patiyala

609-099







Nusrat-e- Patiyala

Patiyala Style Never Dies



I 609 001



I 609 002



I 609 007



I 609 008



I 609 003



I 609 004



I 609 005



I 609 006



I 609 009



I 609 010



Nusrat-e- Patiyala



I 609 007



Nusrat-e- Patiyala



CLASSY © 2016 All rights reserved. Designer's Design and materials, model given perfect combination of color and availability. | 609 005





Nusrat-e- Patiyala



I 609 009

