



ADINATH  
PRINTS

SIMRAN



ADINATH  
PRODES  
**SIMRAN**

The magnificent and majestic cliffs in the distance, the great embrace of the ocean, the perfect carpet of the lush, verdant grass. A truly special atmosphere. And the women in the saree are integral components of this realm. Welcome to the land of perfection.



D.no. - 48001





ADINATH  
PRINTS

# SIMRAN

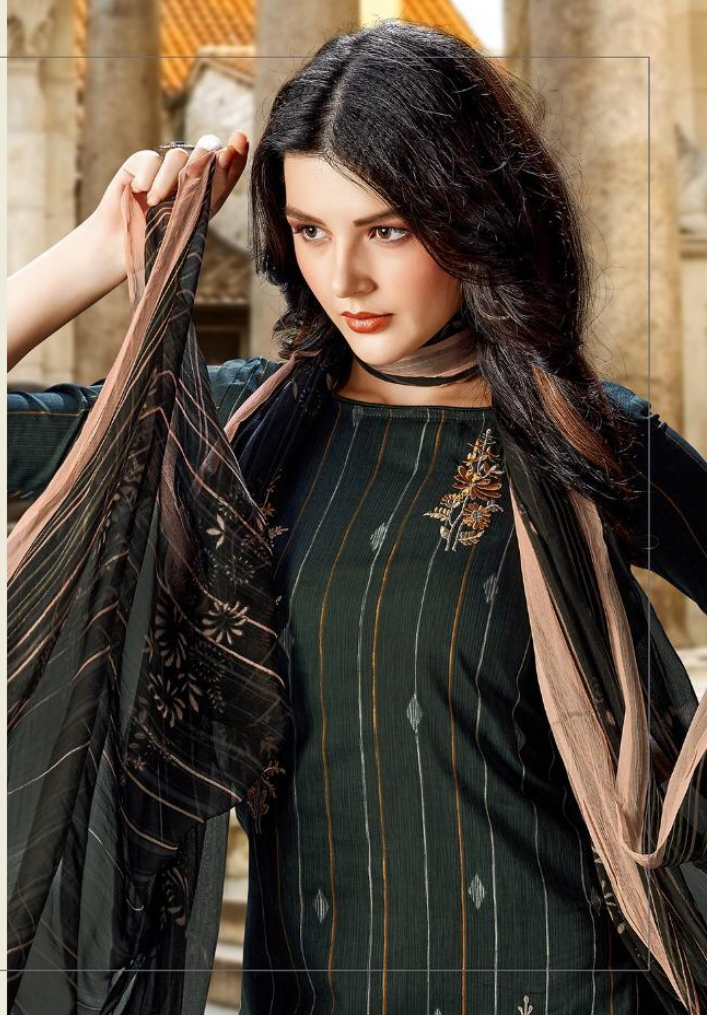
The magnificent and majestic cliffs in the distance, the great embrace of the ocean,  
the perfect carpet of the lush, verdant grass, a truly tropical atmosphere. And the women  
in the saree are an integral component of this realm. Welcome to  
the land of perfection.













48001



48002



48003



48007



48008



48004



48005



48006



48009



48010

ADINATH  
PRINTS

SIMRAN





ADINATH  
PRINTS  
**SIMRAN**

The magnificent and majestic cliffs in the distance, the great embrace of the clean, the perfect carpet of the lush, verdant grass, a truly special atmosphere. And the women in the scene are integral components of this scene. Welcome to the land of perfection.



D.no. - 48006









ADINATH  
PRESENTS  
**SIMRAN**

The magnificence and elegance of the diamond, the great embrace of the cloud, the perfect carpet of the lush, verdant green, a truly special atmosphere. And the woman in the saree, an integral component of this scene. Welcome to the land of perfection.

D.no. - 48005







ADINATH  
PRINTS

SIMRAN





  
**ADINATH**  
PRINTS  
**SIMRAN**

The magnificent and majestic cliffs in the distance. The great embrace of the clear,  
The perfect carpet of the lush, verdant grass. A truly special atmosphere. And the women  
in the saree an integral component of this realm. Welcome to  
the land of perfection.

ADINATH  
PRINTS  
**SIMRAN**

The magnificent and majestic cliffs in the distance, the great embrace of the clouds, the perfect carpet of the lush, verdant grass, a truly special atmosphere. And the woman in the scene, an integral component of this scene, welcome to the land of perfection.

D.no. - 48002







ADINATH  
PRINTS

SIMRAN



