

A woman with long, wavy hair is shown in a close-up, looking towards the camera. She is wearing a vibrant, multi-colored saree with intricate patterns. Her right hand is raised, holding a large, ornate gold ring with a central red gemstone and surrounded by smaller stones. She is also wearing a gold bangle on her left wrist. The background is softly blurred, featuring a warm, golden light source on the left and some green foliage on the right.

Kalaroop

Patiala
EXPRESS
VOL-6





12057







Kalaroop

Patiala
EXPRESS
VOL-6



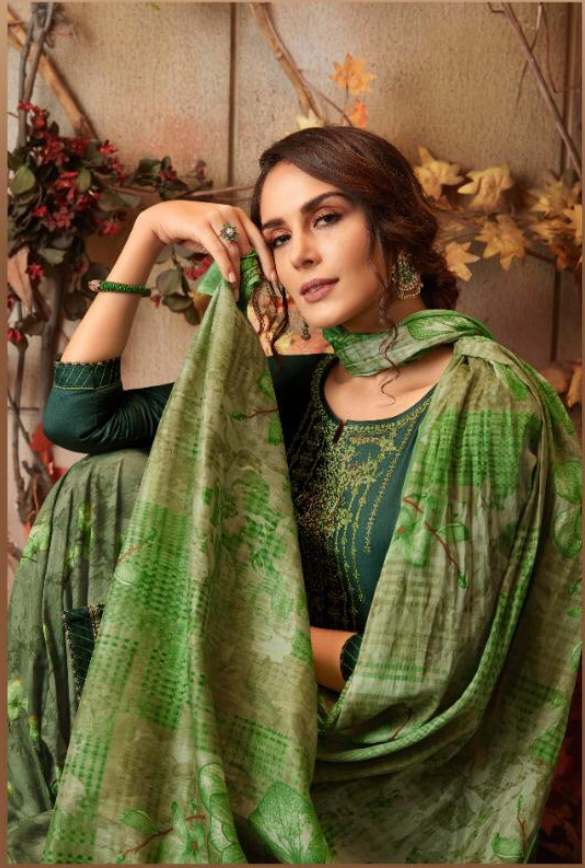
A close-up portrait of a woman with long, wavy hair, looking slightly to the side. She is wearing a vibrant, multi-colored saree with intricate patterns. Her right hand is raised, holding a large, ornate gold ring with a central red gemstone and surrounded by smaller stones. She is also wearing a gold bangle on her left wrist. The background is softly blurred, showing a warm, golden light source on the left and some green foliage on the right.

Kalaroop

Patiala
EXPRESS
VOL-6

















12051



12052



12053



12056



12057



12058



12054



12055



12059



12060