





DIFFERENT CULTURES COME TOGETHER IN A TRIBUTE TO FASHION'S BIGGEST MOMENT THIS SEASON.

4544

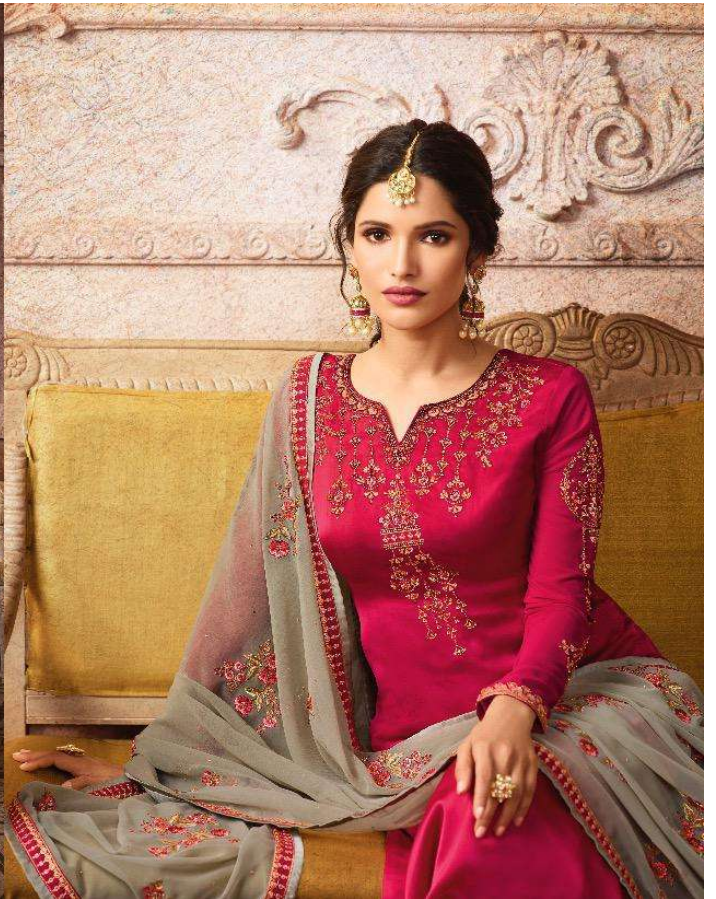
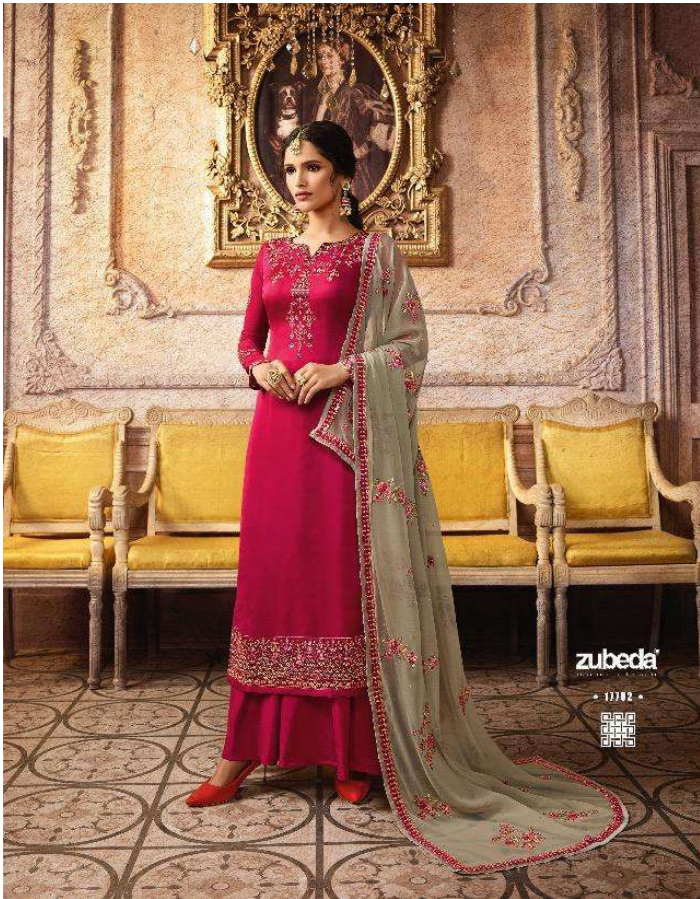


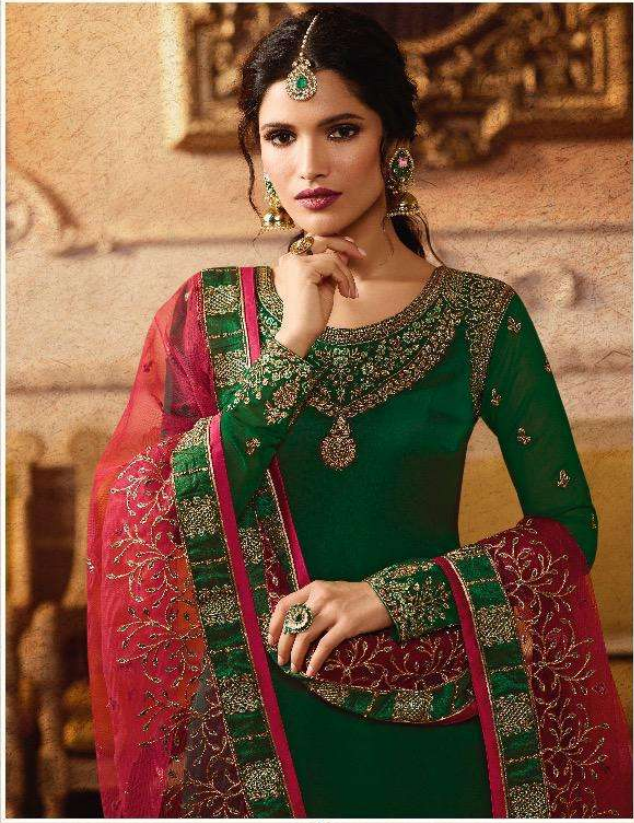
ayaan™
VIPUL
FASHION FOREVER



ayaan
by
vidual
FASHION FOREVER

THIS SPARKLING BEAUTY OF DRESS WILL WORK THEIR
MAGIC ON EVERYTHING IN YOUR WARDROBE.



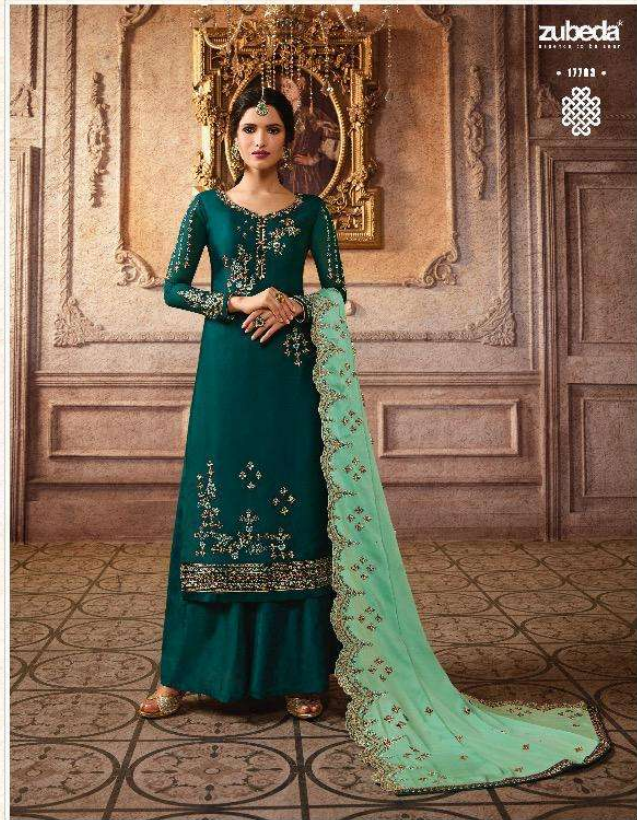




R
Rashi PRINTS



4142



KIMORA



K-1402





* * * * *



* * * * *

K-007

kimora®

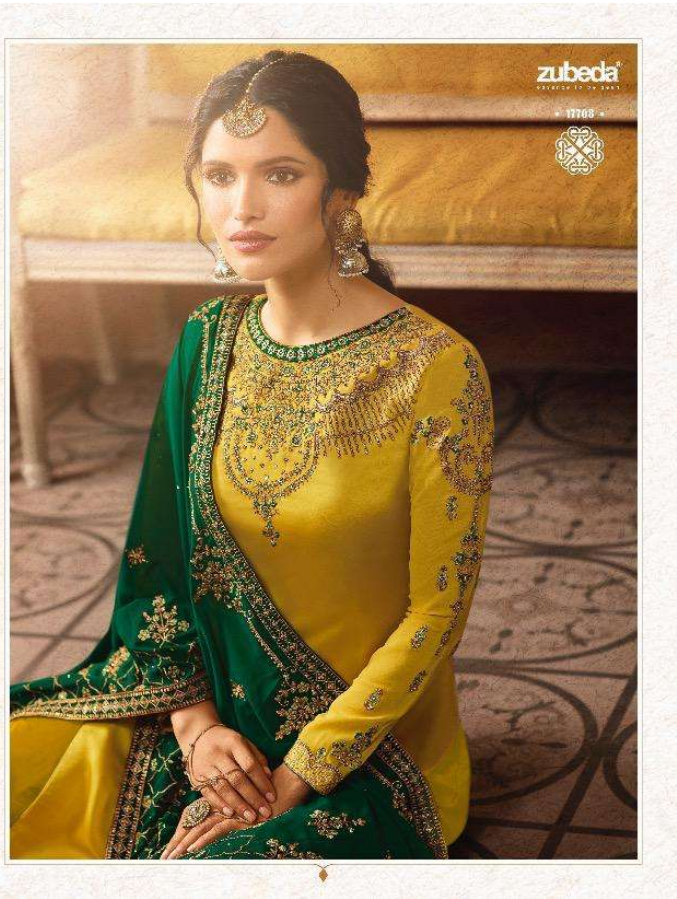


KIMORA

K-1407







KIMORA



K-1405





KIMORA



K-1408





KIMORA



K-1404





ayaan™
by
VIDHI
FASHION FOREVER

EARTHY TONES & NATURAL FABRICS MAKE
FOR SOFT CLASSIC LOOK TO YOUR BEAUTY.

4546

DCAT-49

D.NO:	PRODUCT DETAILS	TOP-L	BUST
D4540A	SATIN GEORGETTE TOP+SLEEVES WITH SAWROVSKI WORK , WITH SANTOON INNER & BOTTOM , PURE BANARASI JACQARD DIGITAL PRINT DUPATTA.	48"	FREE SIZE
D4541A	SATIN GEORGETTE TOP+SLEEVES WITH SAWROVSKI WORK , WITH SANTOON INNER & BOTTOM , PURE BANARASI JACQARD DIGITAL PRINT DUPATTA.	48"	FREE SIZE
D4542A	SATIN GEORGETTE TOP+SLEEVES WITH SAWROVSKI WORK , WITH SANTOON INNER & BOTTOM , PURE BANARASI JACQARD DIGITAL PRINT DUPATTA.	48"	FREE SIZE
D4543A	SATIN GEORGETTE TOP+SLEEVES WITH SAWROVSKI WORK , WITH SANTOON INNER & BOTTOM , PURE BANARASI JACQARD DIGITAL PRINT DUPATTA.	48"	FREE SIZE
D4544A	SATIN GEORGETTE TOP+SLEEVES WITH SAWROVSKI WORK , WITH SANTOON INNER & BOTTOM , PURE BANARASI JACQARD DIGITAL PRINT DUPATTA.	48"	FREE SIZE
D4545A	SATIN GEORGETTE TOP+SLEEVES WITH SAWROVSKI WORK , WITH SANTOON INNER & BOTTOM , PURE BANARASI JACQARD DIGITAL PRINT DUPATTA.	48"	FREE SIZE
D4546A	SATIN GEORGETTE TOP+SLEEVES WITH SAWROVSKI WORK , WITH SANTOON INNER & BOTTOM , PURE BANARASI JACQARD DIGITAL PRINT DUPATTA.	48"	FREE SIZE
D4547A	SATIN GEORGETTE TOP+SLEEVES WITH SAWROVSKI WORK , WITH SANTOON INNER & BOTTOM , PURE BANARASI JACQARD DIGITAL PRINT DUPATTA.	48"	FREE SIZE
D4548A	SATIN GEORGETTE TOP+SLEEVES WITH SAWROVSKI WORK , WITH SANTOON INNER & BOTTOM , PURE BANARASI JACQARD DIGITAL PRINT DUPATTA.	48"	FREE SIZE

kimora[®]

VOL- 14

Aasmi

DESIGN NO.

1401 TO 1408

TOP:

PURE GEORGETTE WITH HEAVY LAKHNAVI
EMBROIDERY INNER HEAVY SANTON

DUPATTA:

ORGANZA WITH HEAVY EMBROIDERY

BOTTOM:

HEAVY SHENTOON

www.kimora.in



TOP

SATIN GORJETTE WITH EMBRODIORY WORK

DUPATTA

BRIDAL CARPE WITH HEAVY EMBRODIORY WORK

BOTTOM & INNER

HEAVY SANTOON

Kimora Fashion Pvt. Ltd.**"KIMORA-1"****Description**

Design No	Dupatta	Top	Bottom
K-001	Pure bemberg dupatta with heavy embroidery and hand work	Pure silk with Embroidery and hand work	Pure cotton satin
K-002	Pure bemberg dupatta with heavy embroidery and hand work	Pure silk with Embroidery and hand work	Pure cotton satin
K-003	Pure bemberg dupatta with heavy embroidery and hand work	Pure silk with Embroidery and hand work	Pure cotton satin
K-004	Pure bemberg dupatta with heavy embroidery and hand work	Pure silk with Embroidery and hand work	Pure cotton satin
K-005	Pure bemberg dupatta with heavy embroidery and hand work	Pure silk with Embroidery and hand work	Pure cotton satin
K-006	Pure bemberg dupatta with heavy embroidery and hand work	Pure silk with Embroidery and hand work	Pure cotton satin
K-007	Pure bemberg dupatta with heavy embroidery and hand work	Pure silk with Embroidery and hand work	Pure cotton satin



Rashi PR
THE WAY TO CRI

Hadipa
Sar

PRICE LIST

S.NO.	PRODUCT DETAIL	D.NO.	
1	<ul style="list-style-type: none"> • TOP :- SATIN GEORGETTE • BOTTOM :- GEORGETTE WITH HEAVY WORK • INNER :- SANTUN • DUPATTA :- NAJNEEN WITH DIAMOND WORK 	D.NO.4141	
2	<ul style="list-style-type: none"> • TOP :- SATIN GEORGETTE • BOTTOM :- GEORGETTE WITH HEAVY WORK • INNER :- SANTUN • DUPATTA :- NAJNEEN WITH DIAMOND WORK 	D.NO.4142	
3	<ul style="list-style-type: none"> • TOP :- SATIN GEORGETTE • BOTTOM :- GEORGETTE WITH HEAVY WORK • INNER :- SANTUN • DUPATTA :- NAJNEEN WITH DIAMOND WORK 	D.NO.4143	
4	<ul style="list-style-type: none"> • TOP :- SATIN GEORGETTE • BOTTOM :- GEORGETTE WITH HEAVY WORK • INNER :- SANTUN • DUPATTA :- NAJNEEN WITH DIAMOND WORK 	D.NO.4144	
5	<ul style="list-style-type: none"> • TOP :- SATIN GEORGETTE • BOTTOM :- GEORGETTE WITH HEAVY WORK • INNER :- SANTUN • DUPATTA :- NAJNEEN WITH DIAMOND WORK 	D.NO.4145	
6	<ul style="list-style-type: none"> • TOP :- SATIN GEORGETTE • BOTTOM :- GEORGETTE WITH HEAVY WORK • INNER :- SANTUN • DUPATTA :- NAJNEEN WITH DIAMOND WORK 	D.NO.4146	