



LIFE . ART . BEAUTY .

...omains perfection is born out of simplicity. Draped in fabrics designed to make you look simple yet elegant, you end up looking simply elegant. The world is yours. Go safe!







**ELAF**  
PREMIUM

LUXURY LAWN COLLECTION

**19002**

**TOP** - CAMBRIC COTTON HEAVY EMBROIDERY WITH CHIKAN WORK

**BOTTOM** - COTTON SEMI LAWN WITH PATCH WORK

**DUPATTA** - NET WITH HEAVY EMBROIDERY CUT WORK CHIFFON  
DIGITAL PRINT



**Saniya**  
TRENDZ

DRY CLEAN ONLY.   
DO NOT USE ANY BLEACH OR STAIN REMOVING CHEMICAL.   
IRON THE FABRIC AT MODERATE TEMPERATURE. 





LIFE . ART . BEAUTY .

...omnius perfection is born out of simplicity. Draped in fabrics designed to make you look simple yet elegant, you end up looking simply elegant. The world is yours. Go safe!







**ELAF**  
PREMIUM

LUXURY LAWN COLLECTION

**19001**

**TOP** - CAMBRIC COTTON HEAVY EMBROIDERY WITH CHIKAN WORK

**BOTTOM** - COTTON SEMI LAWN WITH PATCH WORK

**DUPATTA** - NET WITH HEAVY EMBROIDERY CUT WORK CHIFFON  
DIGITAL PRINT



**Saniya**  
TRENDZ

DRY CLEAN ONLY.   
DO NOT USE ANY BLEACH OR STAIN REMOVING CHEMICAL.   
IRON THE FABRIC AT MODERATE TEMPERATURE. 





**D.No. 19001**



**D.No. 19002**



**D.No. 19003**



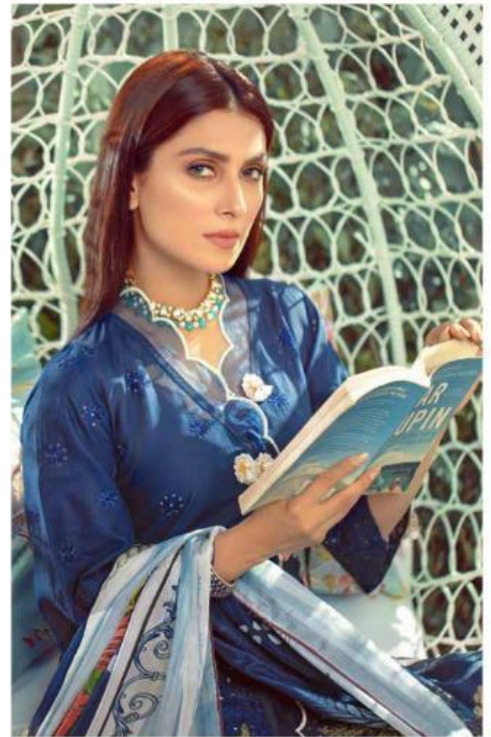
LIFE . ART. BEAUTY.

sometimes perfection is born out of simplicity. Draped in fabrics designed to make you look simple yet elegant, you end up looking simply elegant. The world is yours. Go out!



D.No. 19001






**ELAF**  
 PREMIUM

LUXURY LAWN COLLECTION

**19003**

**TOP** - CAMBRIC COTTON HEAVY EMBROIDERY WITH CHIKAN WORK

**BOTTOM** - COTTON SEMI LAWN WITH PATCH WORK

**DUPATTA** - NET WITH HEAVY EMBROIDERY CUT WORK CHIFFON  
DIGITAL PRINT




**Saniya**  
 TRENDZ

DRY CLEAN ONLY.   
 DO NOT USE ANY BLEACH OR STAIN REMOVING CHEMICAL.   
 IRON THE FABRIC AT MODERATE TEMPERATURE. 





## BEAUTY OF ETERNAL

Let your beauty radiate time with our timeless collection and exquisite designs. Designed to adorn you in elegance and elevate you to a pedestal of immortal beauty and style.



D.No. 19003