



IMROZIA VOL-2

D.No.	TOP	BOTTOM + INNER	DUPATTA
3301	FOX GEORGETTE WITH HEAVY EMBROIDERY	HEAVY DUL SHANTUN	NAZNIN WITH HEAVY EMBROIDERY
3302	FOX GEORGETTE WITH HEAVY EMBROIDERY	HEAVY DUL SHANTUN	NAZNIN WITH HEAVY EMBROIDERY
3303	FOX GEORGETTE WITH HEAVY EMBROIDERY	HEAVY DUL SHANTUN	NAZNIN WITH HEAVY EMBROIDERY
3304	FOX GEORGETTE WITH HEAVY EMBROIDERY	HEAVY DUL SHANTUN	NAZNIN WITH HEAVY EMBROIDERY
3305	NET WITH HEAVY EMBROIDERY	HEAVY DUL SHANTUN	NET WITH HEAVY EMBROIDERY
3306	FOX GEORGETTE WITH HEAVY EMBROIDERY	HEAVY DUL SHANTUN	NAZNIN WITH HEAVY EMBROIDERY

*NOTE : Rate 1299 + GST Extra.





D.No.3301



D.No.3302



D.No.3305



D.No.3306



D.No.3303



D.No.3304

IMROZIA

by







RINAZ[®]
FASHION

D.No.3305



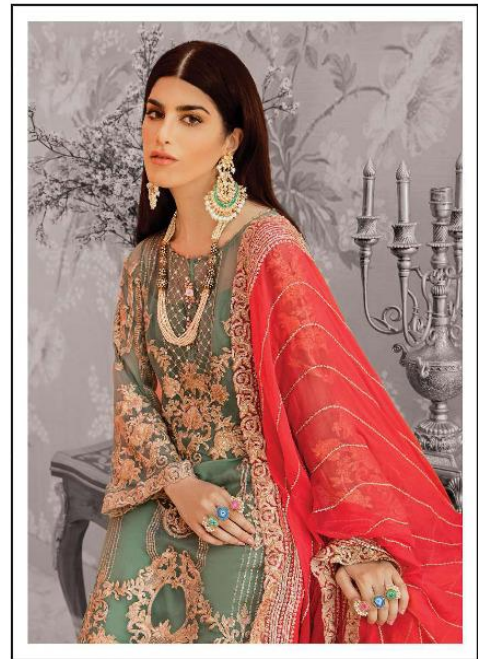
MIDNIGHT
GLARE

A MAGNIFICENT ATTIRE THAT IS INSPIRED BY WHIMSICAL ORNAMENTATIONS, COMPLEMENTED WITH BOLD HUES OF BLACK AND MAROON. THIS SOPHISTICATED DESIGN IS SURE TO GIVE YOU A HEAVENLY LOOK.



RINAZ[®]
FASHION

D.No.3302



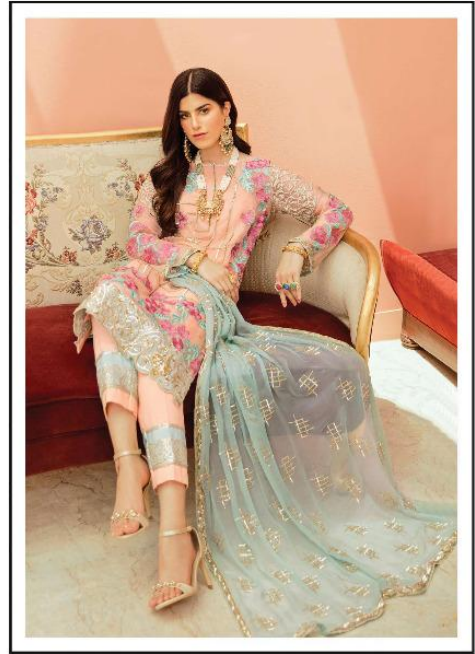
SKY
MYSTIQUE

ACCENTUATE YOUR FESTIVITIES WITH EASTERN TAPESTRIES OF FINE
THREAD WORK AND OCEAN SHADE OF SKY. THIS ELEGANT ENSEMBLE
WILL ADORN YOU WITH ITS INFINITE PROPERTIES.



RINAZ[®]
FASHION

D.No.3306



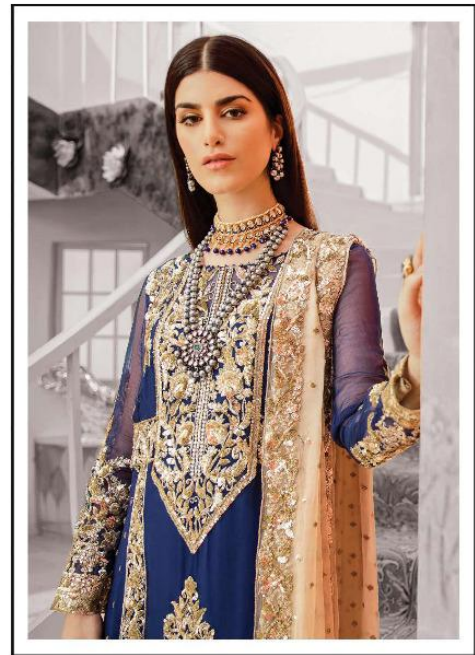
SALMON
BLUSH

ILLUMINATING WITH HYPNOTIZING WELL-CRAFTED ENHANCEMENTS AND SUBLIME COLORS, THIS STUNNING DESIGN IS THE PERFECT LOOK FOR A DAYTIME FORMAL OCCASION.



RINAZ[®]
FASHION

D.No.3303



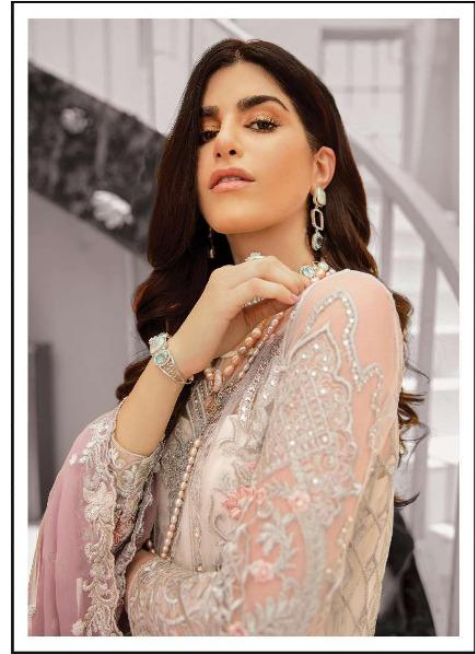
DREAMY
SAPPHIRE

REINVENTING YOUR FASHION STATEMENT WITH ETHNICITY. THIS DREAMY DESIGN IS ILLUMINATED WITH TRADITIONAL SILHOUETTES AND LUMINOUS TINTS ON A LUXE DEEP SAPPHIRE HUE.



RINAZ[®]
FASHION

D.No.3301



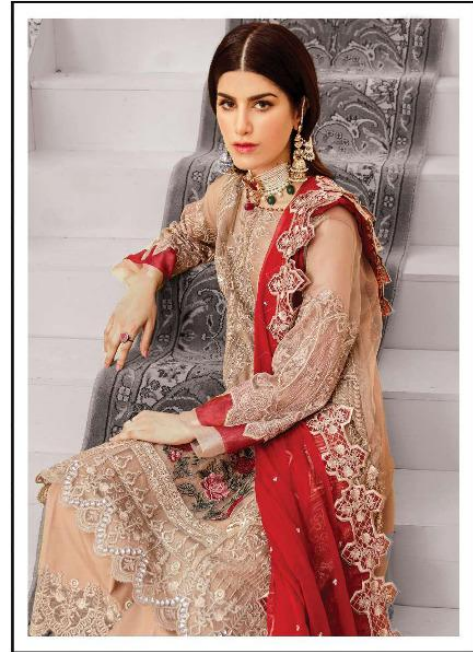
DAISY
LAVENDER

THIS ETHNICAL BEAUTY IS CRAFTED WITH METICULOUS
THREADWORK AND INTRICATE PATTERNS THAT CREATES
AN ADORNMENT REMINISCENT LOOK OF FESTIVITIES.



RINAZ[®]
FASHION

D.No.3304



GOLDEN THIS LUXURIOSLY ENCRUSTED MASTERPIECE IS CRAFTED WITH
BEIGE EXQUISITE FLORAL EMBROIDERY AND INTRICATE DETAILING THAT
WILL LEAVE YOU IN COMPLETE AWE.