



Miss India
the eternal beauty...

Maharani
the fashion queen...



DEEPTEX[®]
PRINTS
VOL.59





Miss India
the eternal beauty...

Maharani
the fashion queen...



DEEPTEX[®]
PRINTS
VOL.59

dt
DEEPTEX
PRINTS



5910

dt
DEEPTEX
PRINTS



5911



dt
DEEPTEX
PRINTS



5924

dt
DEEPTEX
PRINTS



5925



Miss India
the eternal beauty...

Maharani
the fashion queen...



DEEPTEX[®]
PRINTS
VOL.59



5912



5913

DEEPTEX
PRINTS



5904

DEEPTEX
PRINTS



5905

dt
DEEPTEX
PRINTS



5914

dt
DEEPTEX
PRINTS



5915

dt
DEEPTEX
PRINTS



5906

dt
DEEPTEX
PRINTS



5907



Disha Parmar

Disha Parmar
(TV Actress)
The leading Lady of
Woh Apna Sa

Lots of Love

Surbhi

Surbhi Chandna
(TV Actress)
The leading Lady of
Sanjivani



dt
DEEPTEX
PRINTS



5908

dt
DEEPTEX
PRINTS



5909



5901



5902



5903



5904



5905



5915



5916



5917



5918



5919



5906



5907



5908



5909



5910



5920



5921



5922



5923



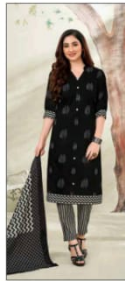
5911



5912



5913



5914



5924



5925



5926




DEEPTEX[®]
PRINTS



5926


DEEPTEX[®]
PRINTS



5922



5923



5918



5919