

Fepic®

QALAMKAR
Lawn Collection

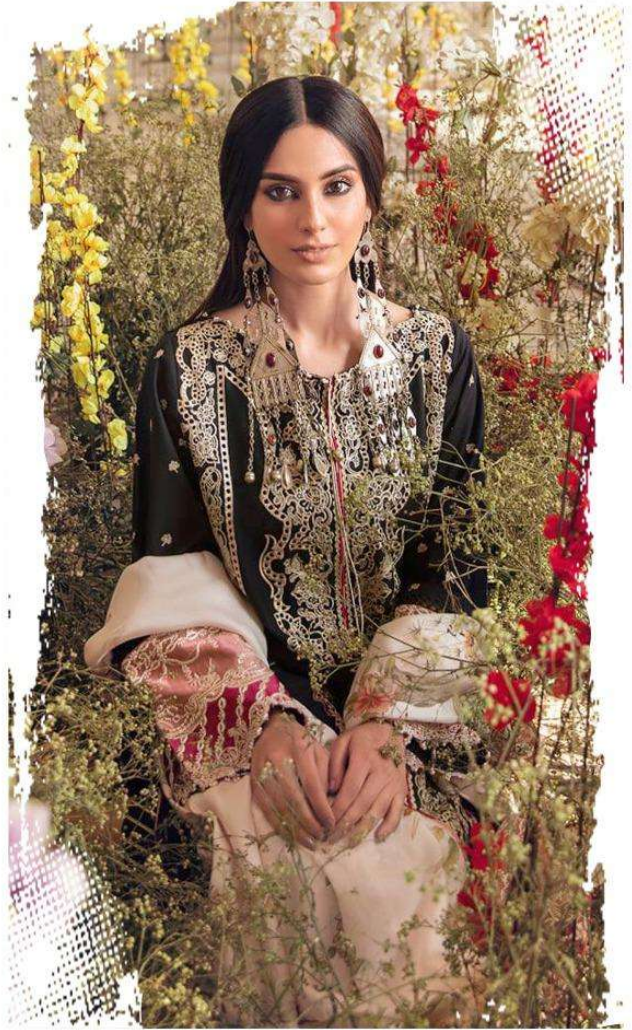


Fepic®

QALAMKAR
Lawn Collection



Fepic[®]



WASHING INTRUCTIONS

DO NOT USE ANY TYPE OF BLEACH OR STAIN REMOVING CHEMICALS
BEFORE CUTTING / STITCHING, FABRIC SHOULD BE SOAKED BE SOAKED IN WATER
(ALL COMPONENTS SEPARATELY) FOR 15 MINUTES
DO NOT KEEP WET FABRIC IN TWISTED FROM IN ORDER TO AVOID COPY MARKS |
WASH COLOURED AND WHITE FABRICS SEPARATELY
IRON CLOTHES AT MODERATE TEMPERATURE | DO NOT DRY FABRIC IN DIRECT SUNLIGHT
(EXTRA LACES, HANGINGS AND ACCESSORIES ARE NOT INDUDED)

D-5124

QALAMKAR
Lawn Collection





D.NO.	TOP	BOTTOM	DUPATTA	RATE
5123	CAMBRIC COTTON WITH SCHIFFLI WORK (BACK PRINT)	SEMI LAWN	ORGANZA DIGITAL PRINTED	1165
5124	CAMBRIC COTTON WITH HEAVY EMBROIDERY (BACK PRINT)	SEMI LAWN	TUBBY DIGITAL PRINTED	1191
5125	CAMBRIC COTTON WITH HEAVY EMBROIDERY (BACK PRINT)	SEMI LAWN	KOTA CHAX HEAVY EMBROIDERY	1211

AVERAGE RATE - 1189

Fepic[®]

:_Fepic

:Fb.com/Fepic11

QALAMKAR
Lawn Collection

QALAMKAR Lawn Collection

Fepic[®]

 :_Fepic

 :Fb.com/Fepic11

D-5123





Fepic®

QALAMKAR
Lawn Collection



D-5123



D-5124

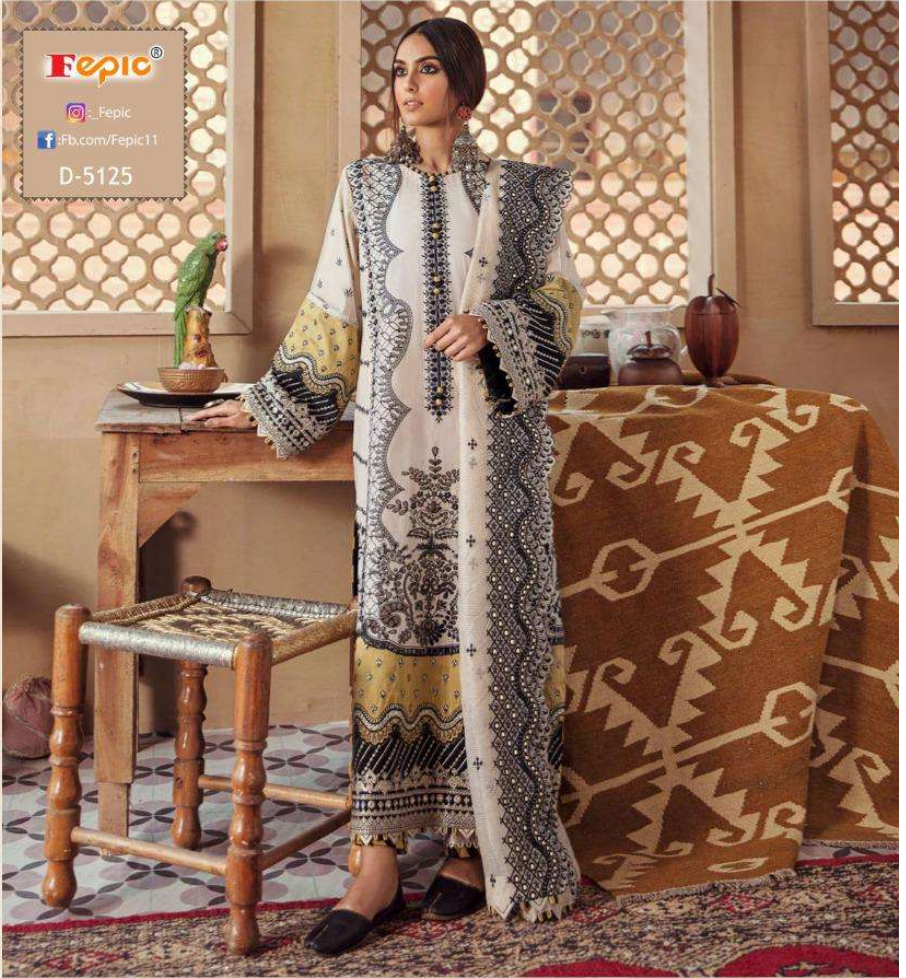
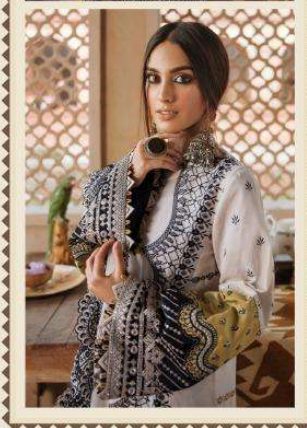


D-5125



Fepic® QALAMKAR
Lawn Collection

 :_Fepic
 :Fb.com/Fepic11



Fepic[®]
@_Fepic
f: Fb.com/Fepic11
D-5125

QALAMKAR
Lawn Collection

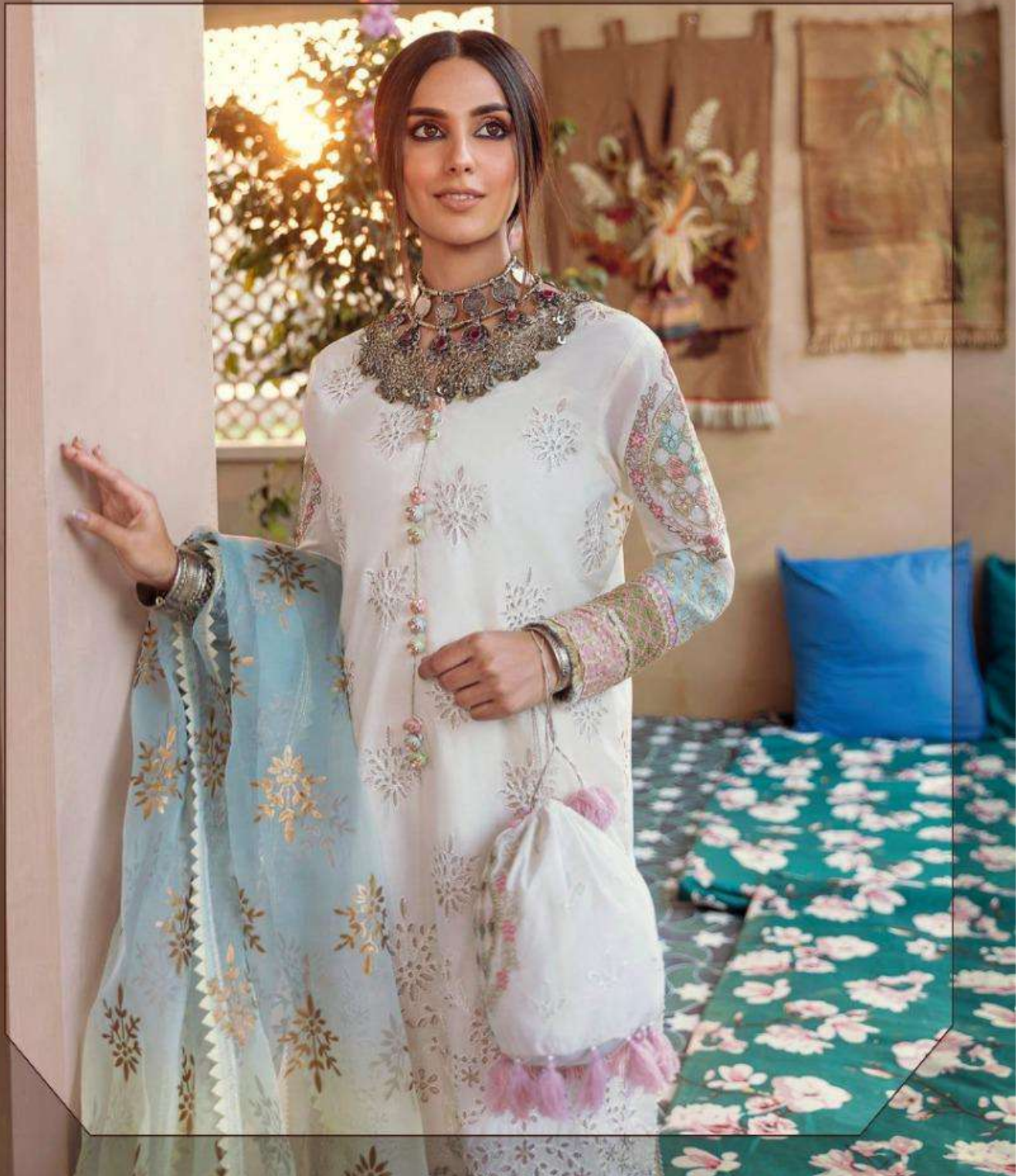
Fepic®

Instagram: @Fepic

Facebook: Fb.com/Fepic11

D-5123

QALAMKAR Lawn Collection





Fepic[®]

 :_Fepic

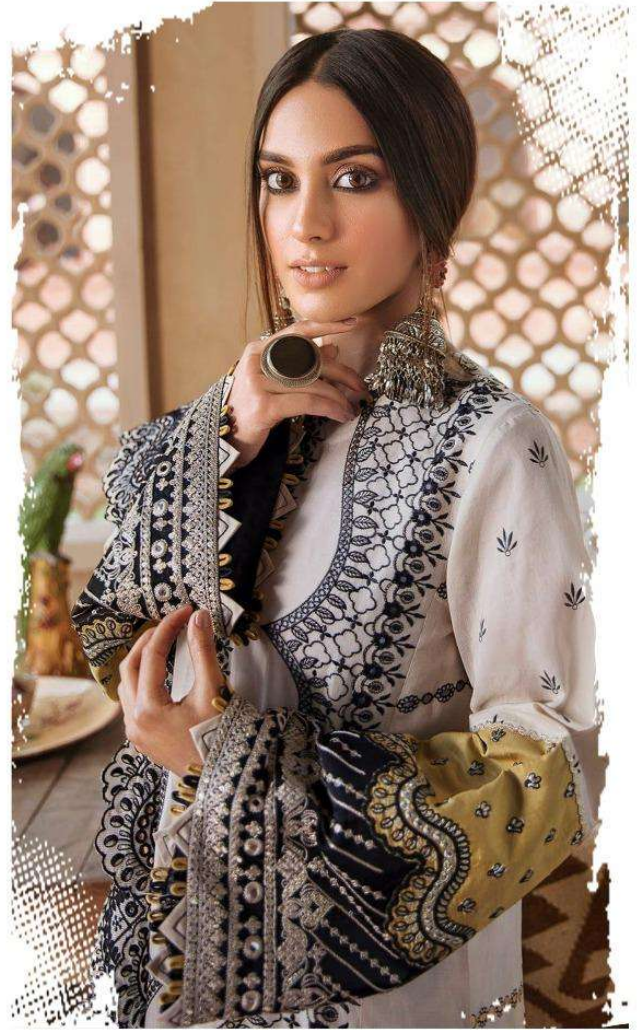
 :Fb.com/Fepic11

D-5124

QALAMKAR
Lawn Collection 



Fepic®



WASHING INTRUCTIONS

DO NOT USE ANY TYPE OF BLEACH OR STAIN REMOVING CHEMICALS
BEFORE CUTTING / STITCHING, FABRIC SHOULD BE SOAKED BE SOAKED IN WATER
(ALL COMPONENTS SEPARATELY) FOR 15 MINUTES
DO NOT KEEP WET FABRIC IN TWISTED FROM IN ORDER TO AVOID COPY MARKS |
WASH COLOURED AND WHITE FABRICS SEPARATELY
IRON CLOTHES AT MODERATE TEMPERATURE | DO NOT DRY FABRIC IN DIRECT SUNLIGHT
(EXTRA LACES, HANGINGS AND ACCESSORIES ARE NOT INDUDED)

D-5125

QALAMKAR
Lawn Collection



Fepic[®]



WASHING INTRUCTIONS

DO NOT USE ANY TYPE OF BLEACH OR STAIN REMOVING CHEMICALS
BEFORE CUTTING / STITCHING, FABRIC SHOULD BE SOAKED BE SOAKED IN WATER
(ALL COMPONENTS SEPARATELY) FOR 15 MINUTES
DO NOT KEEP WET FABRIC IN TWISTED FROM IN ORDER TO AVOID COPY MARKS |
WASH COLOURED AND WHITE FABRICS SEPARATELY
IRON CLOTHES AT MODERATE TEMPERATURE | DO NOT DRY FABRIC IN DIRECT SUNLIGHT
(EXTRA LACES, HANGINGS AND ACCESSORIES ARE NOT INDUDED)

D-5123

QALAMKAR
Lawn Collection

