

Ramsha®
VOL-18





Emb Sleeves

Emb Front

Emb Net Dupatta

Bottom

Patch



R-336



Emb Sleeves

Emb Front

Emb Chiffon Dupatta

Bottom



R-337



Emb Chiffon Dupatta

Emb Sleeves

Emb Front

Bottom



R-338



Emb Sleeves

Emb Chiffon Dupatta

Emb Front

Bottom



R-335

**Ramsha**[®]

#R-338



TOP- FOX GEORGET WITH HEAVY EMBROIDERY
BOTTOM- DULL SANTOON
DUPATTA - NAZMEEN WITH HEAVY EMBROIDERY



Ⓟ DRY CLEAN ONLY.
ⓧ DO NOT USE ANY BLEACH OR STAIN REMOVING CHEMICAL.
Ⓡ IRON THE FABRIC AT MODERATE TEMPERATURE.



#R-336



TOP- FOX GEORGET WITH HEAVY EMBROIDERY
BOTTOM- DULL SANTOON
DUPATTA - NET WITH HEAVY EMBROIDERY

- Ⓟ DRY CLEAN ONLY.
- ✘ DO NOT USE ANY BLEACH OR STAIN REMOVING CHEMICAL.
- ☎ IRON THE FABRIC AT MODERATE TEMPERATURE.



#R-337



TOP- FOX GEORGET WITH HEAVY EMBROIDERY
BOTTOM- DULL SANTOON
DUPATTA - NAZMEEN WITH HEAVY EMBROIDERY

- Ⓟ DRY CLEAN ONLY.
- ✘ DO NOT USE ANY BLEACH OR STAIN REMOVING CHEMICAL.
- ☎ IRON THE FABRIC AT MODERATE TEMPERATURE.



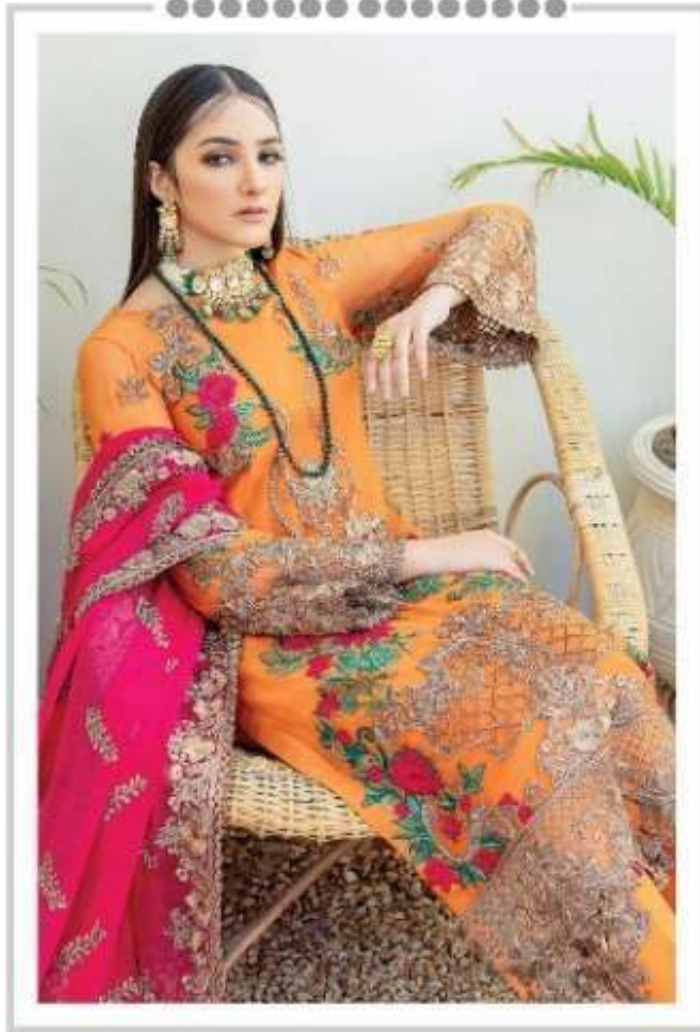
#R-335



TOP- FOX GEORGET WITH HEAVY EMBROIDERY
BOTTOM- DULL SANTOON
DUPATTA - NAZMEEN WITH HEAVY EMBROIDERY

Ⓟ DRY CLEAN ONLY.
ⓧ DO NOT USE ANY BLEACH OR STAIN REMOVING CHEMICAL.
Ⓡ IRON THE FABRIC AT MODERATE TEMPERATURE.

Ramsha®
VOL-18





#R-335



#R-336



#R-337



#R-338