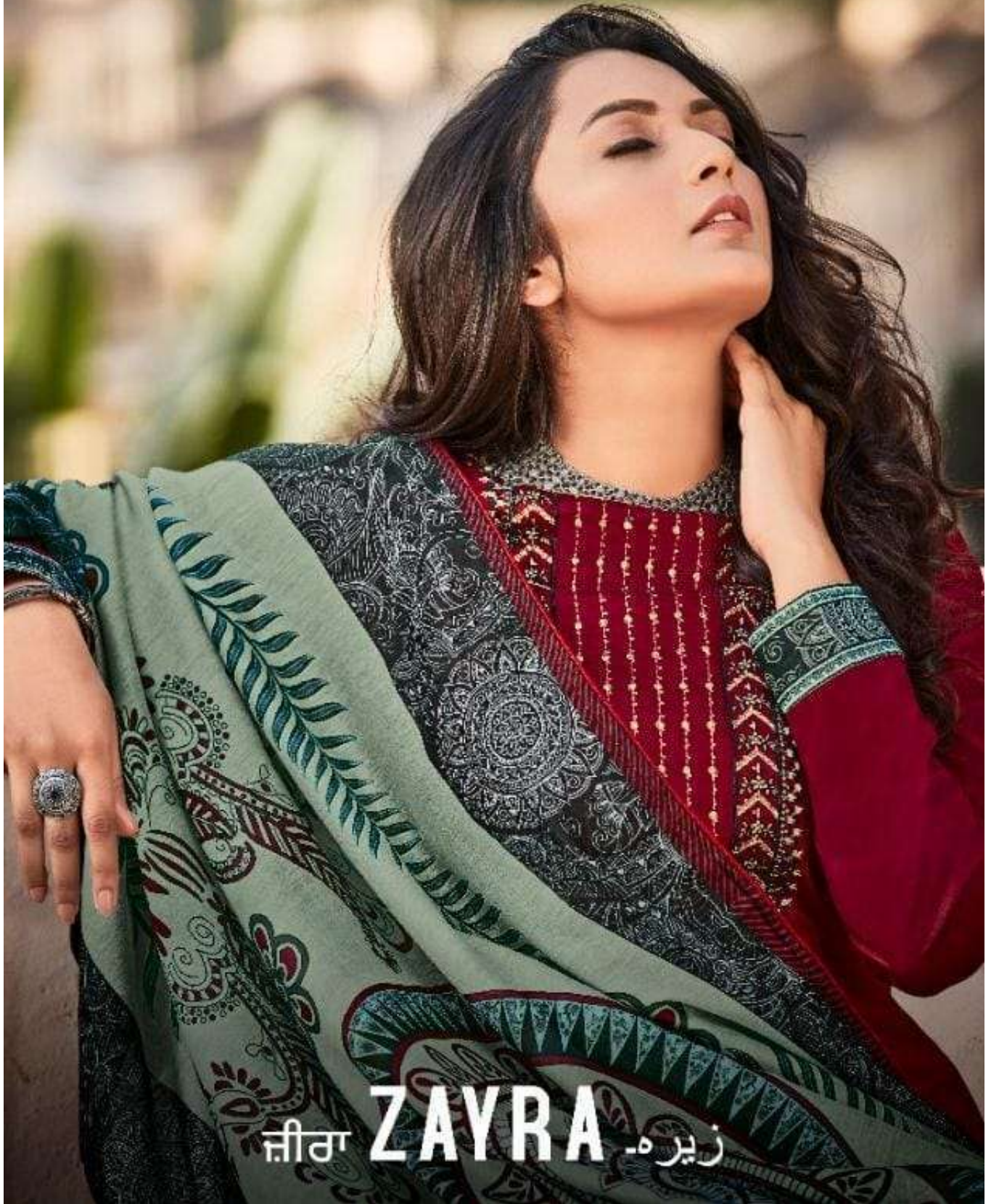
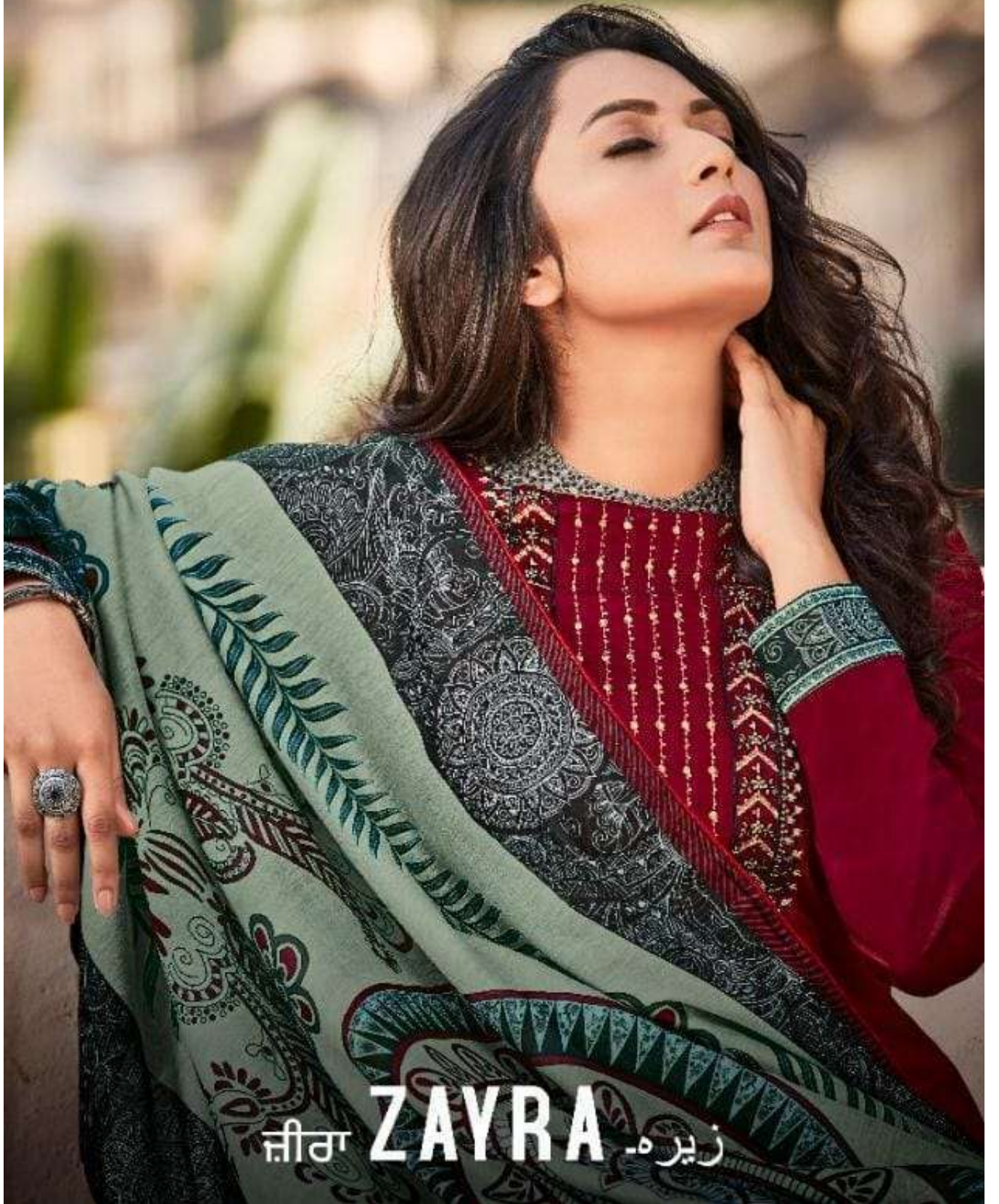


Levisha®



ਜੀਰਾ **ZAYRA** زیرہ

Levisha®



ਜੀਰਾ **ZAYRA** زیرہ





Levisha®



Color style 1016





A woman with dark, wavy hair is standing on a stone staircase. She is wearing a dark brown long-sleeved top and a large, patterned shawl with geometric and floral motifs in black, white, and brown. She is leaning her right hand against a light-colored, textured wall. The background shows a stone railing and some greenery, suggesting an outdoor setting. The lighting is warm and soft, creating a serene atmosphere.

Levanta®

Shop our style this season  
from the fashion archives to current trends reports the  
case of certain countries and ethnicities





Levisha®



1013



1014



1015



1016



1017



1018