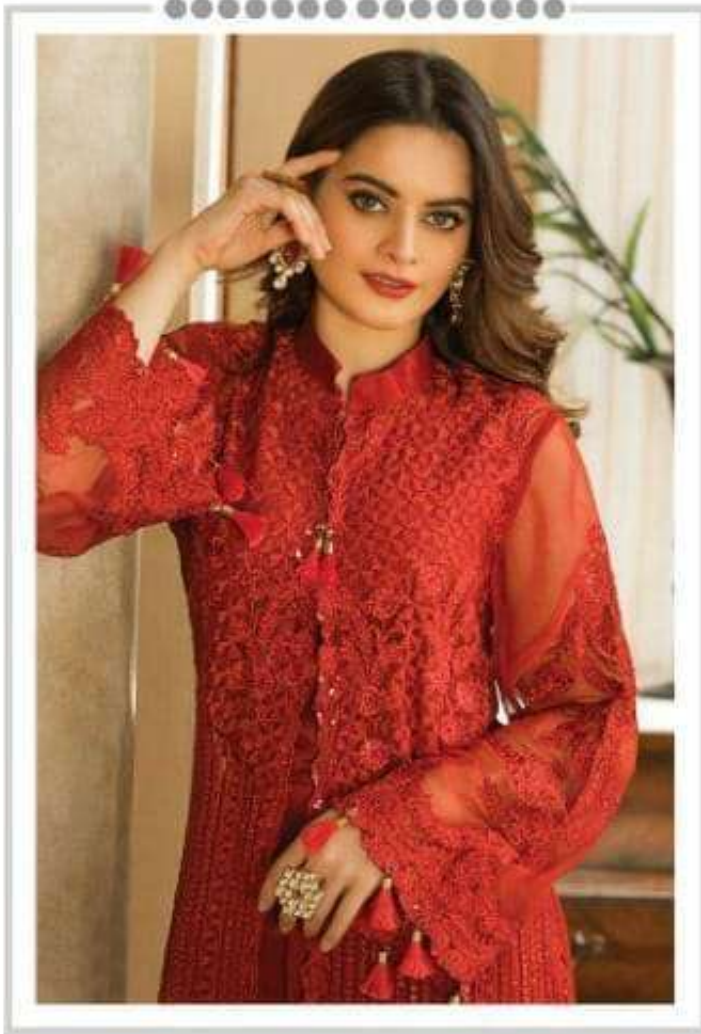



VOL-30





#R-392



TOP- FOX GEORGET WITH HEAVY EMBROIDERY
BOTTOM- DULL SANTOON
DUPATTA - NAZMEEN WITH HEAVY EMBROIDERY

- Ⓟ DRY CLEAN ONLY.
- ✂ DO NOT USE ANY BLEACH OR STAIN REMOVING CHEMICAL.
- ☎ IRON THE FABRIC AT MODERATE TEMPERATURE.



#R-391



TOP- FOX GEORGET WITH HEAVY EMBROIDERY
BOTTOM- DULL SANTOON
DUPATTA - NAZMEEN WITH HEAVY EMBROIDERY

Ⓟ DRY CLEAN ONLY.
ⓧ DO NOT USE ANY BLEACH OR STAIN REMOVING CHEMICAL.
Ⓡ IRON THE FABRIC AT MODERATE TEMPERATURE.


Ramsha®

#R-394



TOP- FOX GEORGET WITH HEAVY EMBROIDERY
BOTTOM- DULL SANTOON
DUPATTA - NAZMEEN WITH HEAVY EMBROIDERY

Ⓟ DRY CLEAN ONLY.
ⓧ DO NOT USE ANY BLEACH OR STAIN REMOVING CHEMICAL.
Ⓡ IRON THE FABRIC AT MODERATE TEMPERATURE.



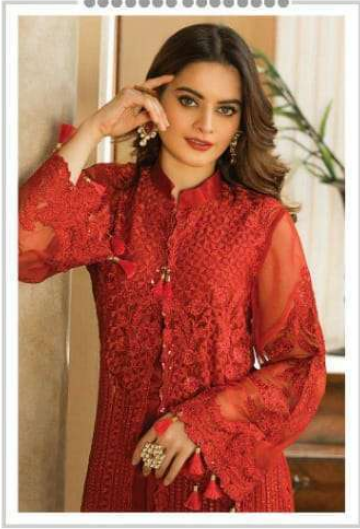
#R-393



TOP- FOX GEORGET WITH HEAVY EMBROIDERY
BOTTOM- DULL SANTOON
DUPATTA - NAZMEEN WITH HEAVY EMBROIDERY

Ⓟ DRY CLEAN ONLY.
ⓧ DO NOT USE ANY BLEACH OR STAIN REMOVING CHEMICAL.
Ⓡ IRON THE FABRIC AT MODERATE TEMPERATURE.

Ramsha®
VOL-30



Ramsha®
VOL-30





Ramsha

#R-392



TOP- FOX GEORGET WITH HEAVY EMBROIDERY
BOTTOM- DRILL SANTOON
DUPATTA- NAZMEEN WITH HEAVY EMBROIDERY

☞ DRY CLEAN ONLY
☞ DO NOT USE ANY BLEACH OR STAIN REMOVING CHEMICAL
☞ IRON THE FABRIC AT MODERATE TEMPERATURE



Ramsha
#R-391



TOP: FOX GEORGET WITH HEAVY EMBROIDERY
BOTTOM: DULL SANTOON
DORAZA - NAZMEEN WITH HEAVY EMBROIDERY

● DRY CLEAN ONLY
● DO NOT USE ANY BLEACH OR STAIN REMOVER
● WASH THE FABRIC AT MEDIUM TO WARM TEMPERATURE



amsha

#R-393

WITH HEAVY EMBROIDERY
WITH HEAVY EMBROIDERY
OR STAIN REMOVING CHEMICAL
OR STAIN REMOVING CHEMICAL



Ramsha

#R-96



TOP- FOX GEORGET WITH HEAVY EMBROIDERY
BOTTOM- DULL SANTOON
DOPATTA - NAZMEEN WITH HEAVY EMBROIDERY

☉ DRY CLEAN ONLY
☉ DO NOT USE ANY BLEACH OR STAIN REMOVING CHEMICAL
☉ IRON THE FABRIC AT MODERATE TEMPERATURE


VOL-30

