

7209





7202



7209



SKU/CODE	CATEGORY	MAIN COLOR	LEHenga FABRIC	BLOUSE FABRIC	DUPATTA FABRIC	SIZE (SEMI STITCHED)	WORK TYPE
7201	LEHenga CHOLI	Navy Blue	Velvet	Velvet	Soft Net	UP TO 42 BUST AND WAIST	Dori, Zari and Sequins Embroidery Work
7202	LEHenga CHOLI	Maroon	Velvet	Velvet	Soft Net	UP TO 42 BUST AND WAIST	Dori, Zari and Sequins Embroidery Work
7203	LEHenga CHOLI	Dark Green	Velvet	Velvet	Soft Net	UP TO 42 BUST AND WAIST	Dori, Zari and Sequins Embroidery Work
7204	LEHenga CHOLI	Purple	Velvet	Velvet	Soft Net	UP TO 42 BUST AND WAIST	Dori, Zari and Sequins Embroidery Work
7205	LEHenga CHOLI	Dark Blue	Tafeta Satin Silk	Tafeta Satin Silk	Soft Net	UP TO 42 BUST AND WAIST	Thread, Dori, Zari Embroidery with Diamond Work
7206	LEHenga CHOLI	Green	Tafeta Satin Silk	Tafeta Satin Silk	Soft Net	UP TO 42 BUST AND WAIST	Thread, Dori, Zari Embroidery with Diamond Work
7207	LEHenga CHOLI	Orange	Stub Silk	Stub Silk	Soft Net	UP TO 42 BUST AND WAIST	Thread, Dori, Zari Embroidery with Diamond Work
7208	LEHenga CHOLI	Red	Stub Silk	Stub Silk	Soft Net	UP TO 42 BUST AND WAIST	Thread, Dori, Zari Embroidery with Diamond Work
7209	LEHenga CHOLI	Baby Pink	Stub Silk	Stub Silk	Soft Net	UP TO 42 BUST AND WAIST	Thread, Dori, Zari Embroidery with Diamond Work
7210	LEHenga CHOLI	Cream	Stub Silk	Stub Silk	Soft Net	UP TO 42 BUST AND WAIST	Thread, Dori, Zari Embroidery with Diamond Work
7211	LEHenga CHOLI	Dark Green	Tafeta Satin Silk	Tafeta Satin Silk	Soft Net	UP TO 42 BUST AND WAIST	Thread, Dori, Zari Embroidery with Diamond Work
7212	LEHenga CHOLI	Purple	Tafeta Satin Silk	Tafeta Satin Silk	Soft Net	UP TO 42 BUST AND WAIST	Thread, Dori, Zari Embroidery with Diamond Work

7204



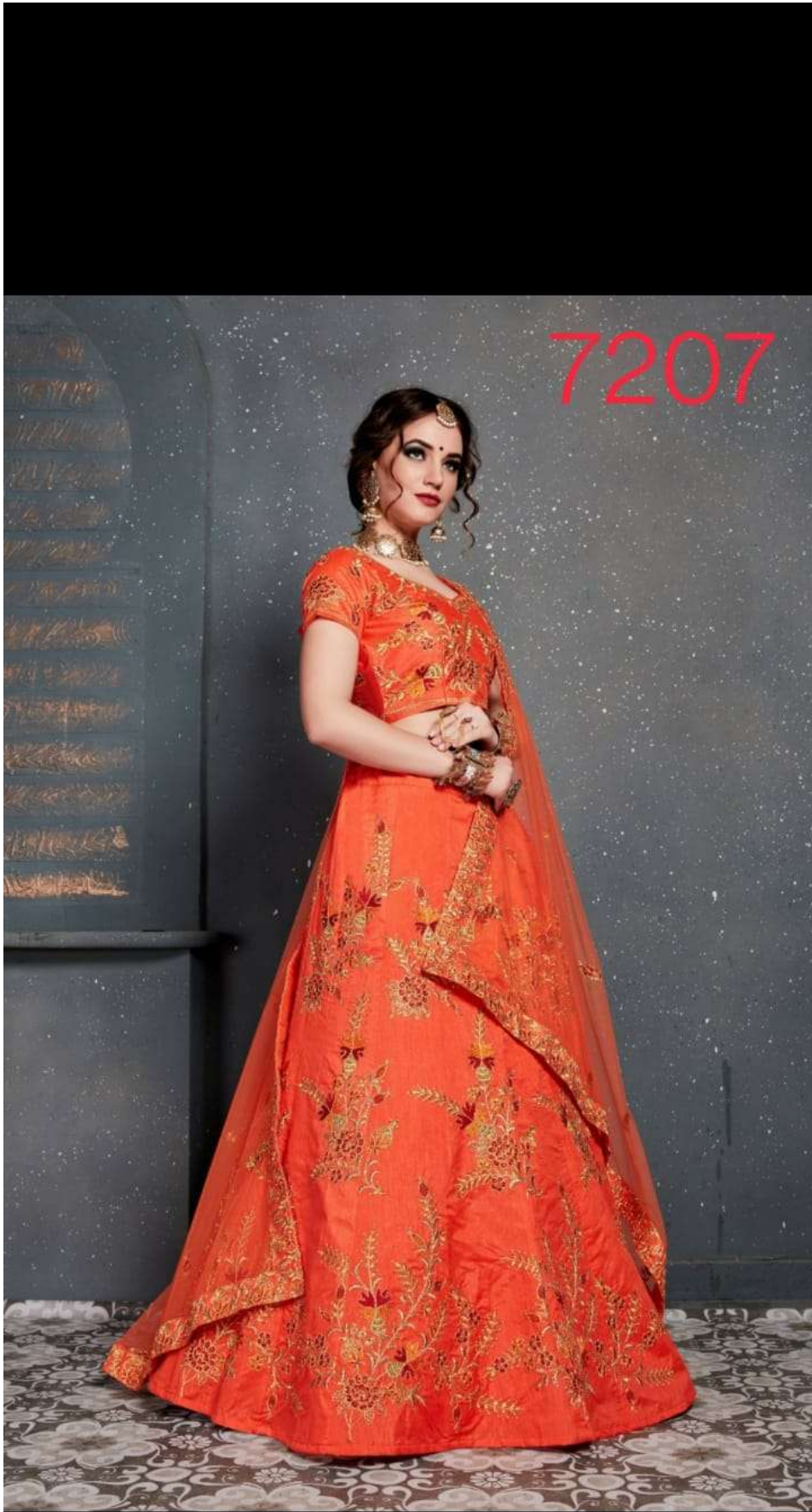


7208



7203









7212



7210

