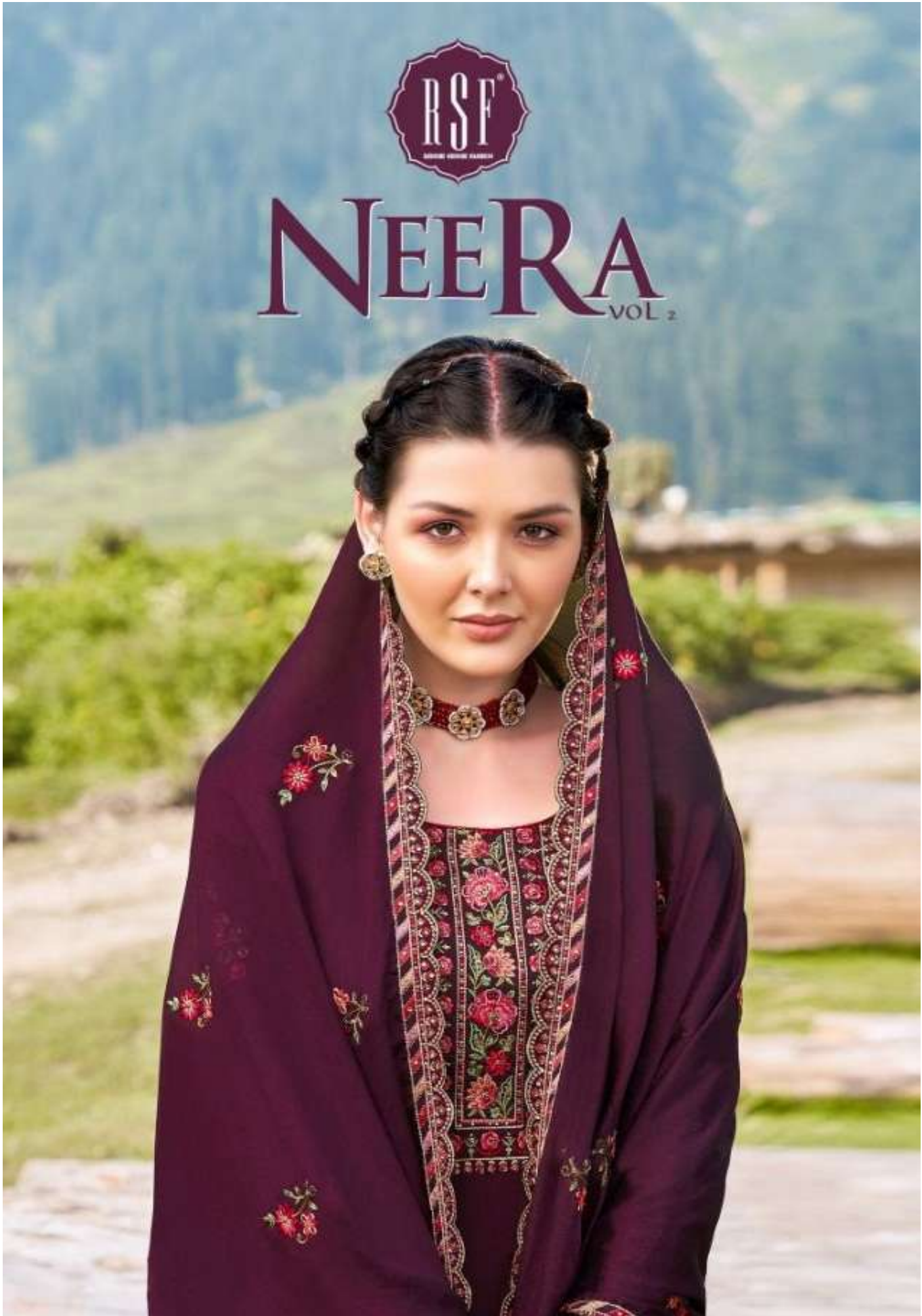




NEERA

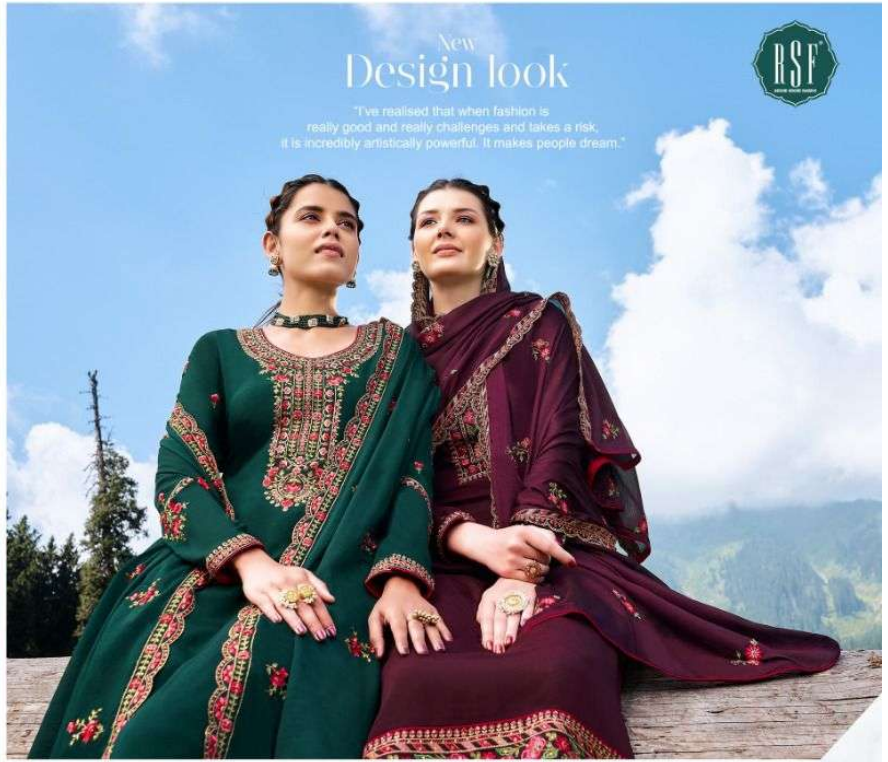

VOL 2





New
Design look

"I've realised that when fashion is really good and really challenges and takes a risk, it is incredibly artistically powerful. It makes people dream."

Two women are sitting on a wooden ledge against a blue sky with white clouds. The woman on the left is wearing the same green embroidered dress as in the first image. The woman on the right is wearing a maroon dress with similar floral embroidery. Both are wearing gold jewelry. The background features a mountainous landscape with green hills and a few trees.



NEERA VOL. 2



19301



19302



19303



19304



19305



19306



PRESENTING TO YOU OUR NEW CATALOGUE

NEERA_{VOL. 2}

FROM RSF FASHIONS

TOP

PURE CHINON SILK HEAVY
EMBROIDERY WORK



INNER

DULL SANTUN



BOTTOM

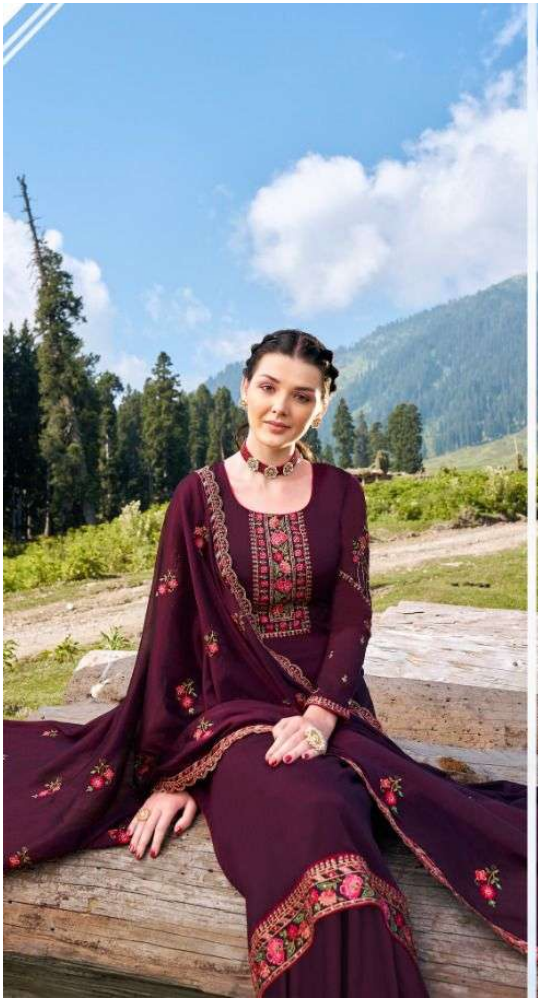
DULL SANTUN



DUPATTA

PURE CHINON SILK HEAVY
DUPATTA WORK







Feminine Beauty

Get new collection in your wardrobe. Now the Style. One step closer to Perfection when your look gets better definition with just a Little Attention to Detail.



19304



Refreshing desire

"Style has become very important, the whole idea of style, what your personal style is. It's your identity."



19301





Eternal Designs
A gorgeous dress with contemporary design
would add freshness and stunning
glamour to her look.



19305



Blazing accents
"Style is wearing an evening dress
in an amazingly
confident and seductive."



19302





19303



EXAMOUR LOOK
Fashion is what you're offered that tries to sell for designers.
And style is what you choose.







NEERA

VOL 2

