

A close-up photograph of a woman wearing a vibrant yellow and green sari with a geometric pattern. She is adorned with a large, ornate necklace featuring a central square pendant with a red gemstone, surrounded by colorful beads in shades of pink, green, and yellow. She also wears a matching earring with a large, faceted red gemstone and colorful beads. Her eyes are closed, and her hand is raised to her forehead, suggesting a serene or contemplative mood. The background is a textured, light-colored wall.

KIMORA®

Meera
vol-4

KIMORA®



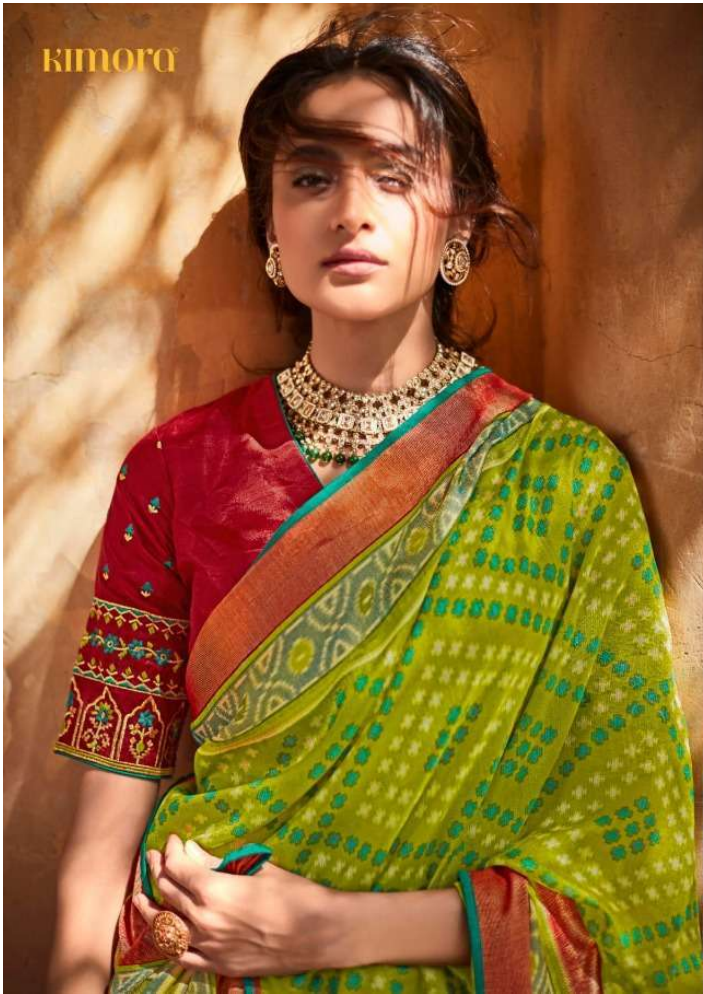
P 15071



A close-up photograph of a woman with dark hair, wearing a vibrant yellow and green patterned sari. She is adorned with a large, ornate necklace featuring a central square pendant with a red gemstone, surrounded by colorful beads in shades of pink, green, and yellow. She also wears a matching earring with a large, faceted diamond-shaped pendant and a red gemstone. Her hand is raised to her forehead, and she has a serene expression. The background is a textured, light-colored wall.

KIMORA®

Meera
vol-4



kimora



P 15070





hira

P 15061



KIMORA



P 15069



KIMORA



P 15067



KIMORA



P 15062



KIMORA







P 15066



KIMORA

kimora



P 15064



KIMORA®



P 15063



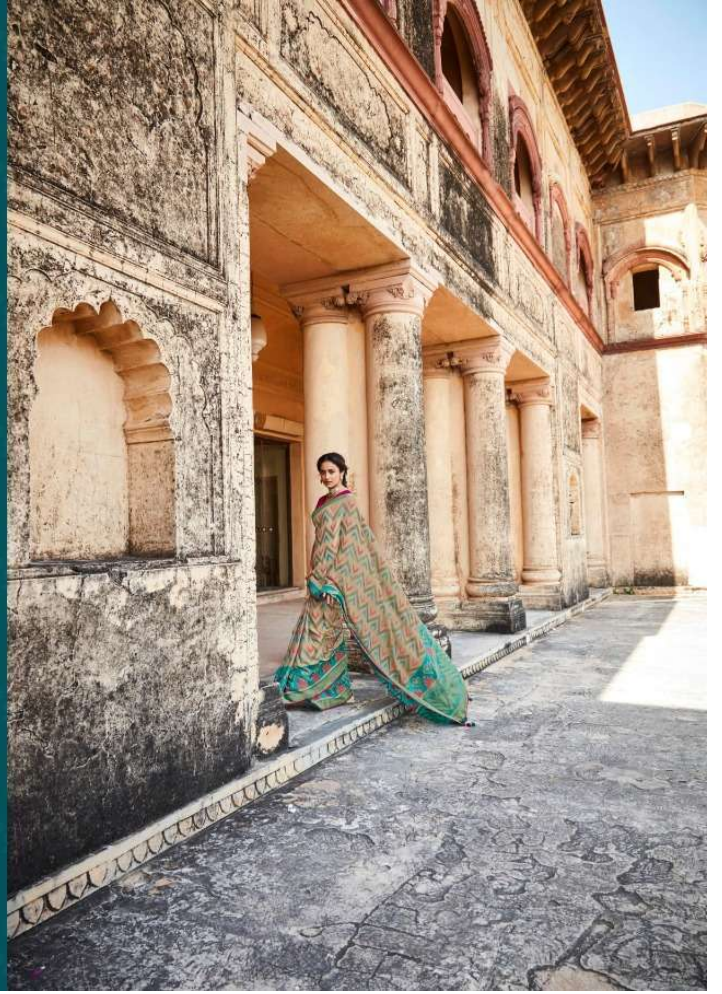
KIMORA



P 15066



KIMORA





KIMORA



P 15061







KIMORA



P 15065



P 15061



P 15062



P 15063



P 15064



P 15065



P 15066



P 15067



P 15068



P 15069



P 15070



P 15071



KIMORA

Meera
vol-4