

A woman with dark hair pulled back is the central figure. She is wearing a dark blue top with a vibrant floral pattern in orange, yellow, and green, and a light-colored skirt with a matching floral pattern. She is sitting and looking towards the camera. The background features a large window with a grid pattern, a classical stone bust of a woman's head on a pedestal to the left, and a dark wood door to the right. The lighting is soft and natural, coming from the window.

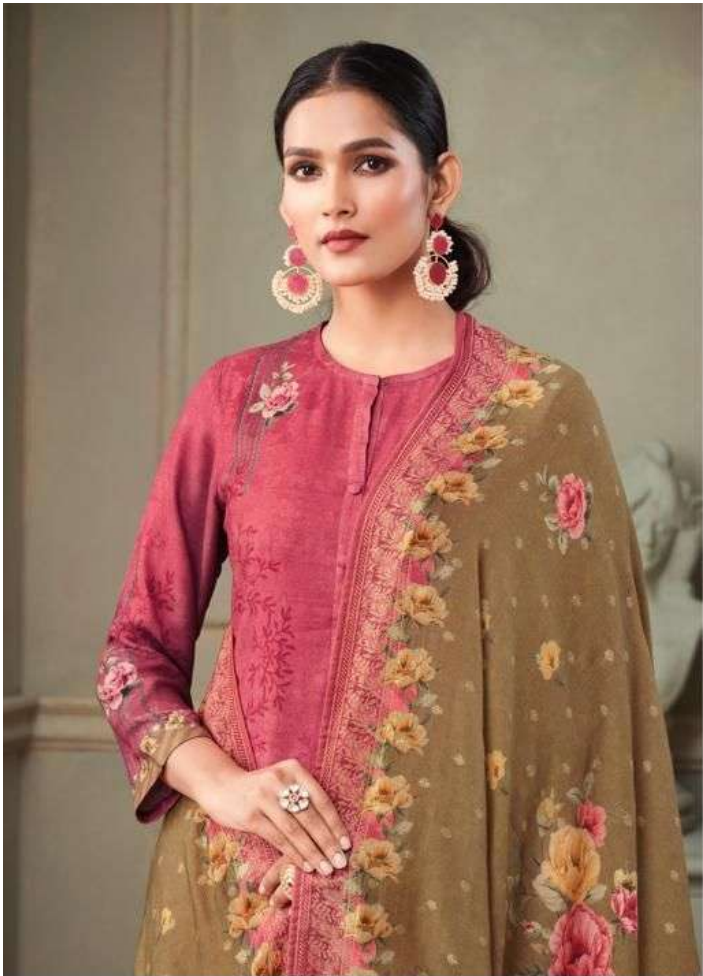
Rag Darbari



1152

sahiba-rag-darbari-staple-twill-digital-print-salwar-suit





sahiba-rag-darbari-staple-twill-digital-print-salwar-suit



1188



1138

sahiba-rag-darbari-staple-twill-digital-print-salwar-suit





sahiba-rag-darbari-staple-twill-digital-print-salwar-suit



sahiba-rag-darbari-staple-twill-digital-print-salwar-suit



1177



sahiba-rag-darbari-staple-twill-digital-print-salwar-suit



sahiba-rag-darbari-staple-twill-digital-print-salwar-suit

A woman with dark hair pulled back is the central figure. She is wearing a dark blue top with a vibrant floral pattern in orange, yellow, and green, and a light-colored skirt with a matching floral pattern. She is sitting and looking towards the camera. The background features a large window with a grid pattern, a classical stone bust of a woman on the left, and a dark wood door on the right. The lighting is soft and natural, coming from the window.

Rag Darbari



Rag Darbari

sahiba-rag-darbari-staple-twill-digital-print-salwar-suit

RATE LIST



H S N CODE - 540834

DESIGN NO

1188 - 1177

1126 - 1120

1152 - 1162

1138 - 1132

DESCRIPTION

TOP - STAPLE TWILL DIGITAL PRINT WITH HAND WORK

BOTTOM - STAPLE TWILL

DUPATTA - PASHMINA TWILL JACQUARD DIGITAL PRINTED

RATE

{ **RS, 1895/-** }

TOTAL SUITS = 8 TOTAL AMOUNT - 15160/- AVG. RATE - 1895/-



sahiba-rag-darbari-staple-twill-digital-print-salwar-suit



1188



1126



1152



1132



1120



1177



1138



1162



Sahiba

Rag Darbari

sahiba-rag-darbari-staple-twill-digital-print-salwar-suit