



VARSHA

Kaira



1401-A



1401-B



1401-C


VARSHA
Kaira



VARSHA
KAIRA

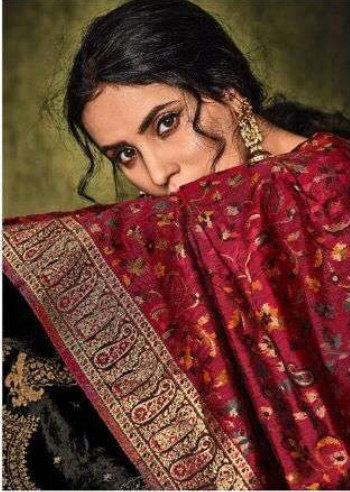


PRODUCT DETAILS

TOP : PURE VELVET WITH EMBROIDERY
BOTTOM : PASHMINA SOLID
DUPATTA : KAANI SHAWL WOVEN

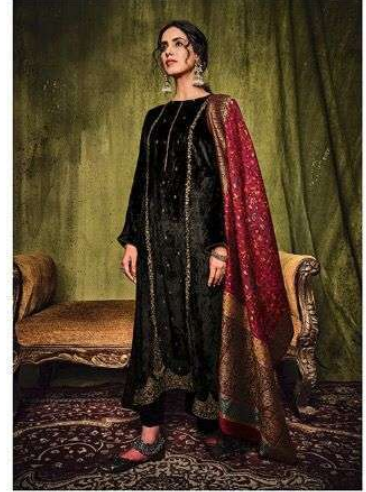
FROM VARSHA FASHION





VARSHA

KAIRA



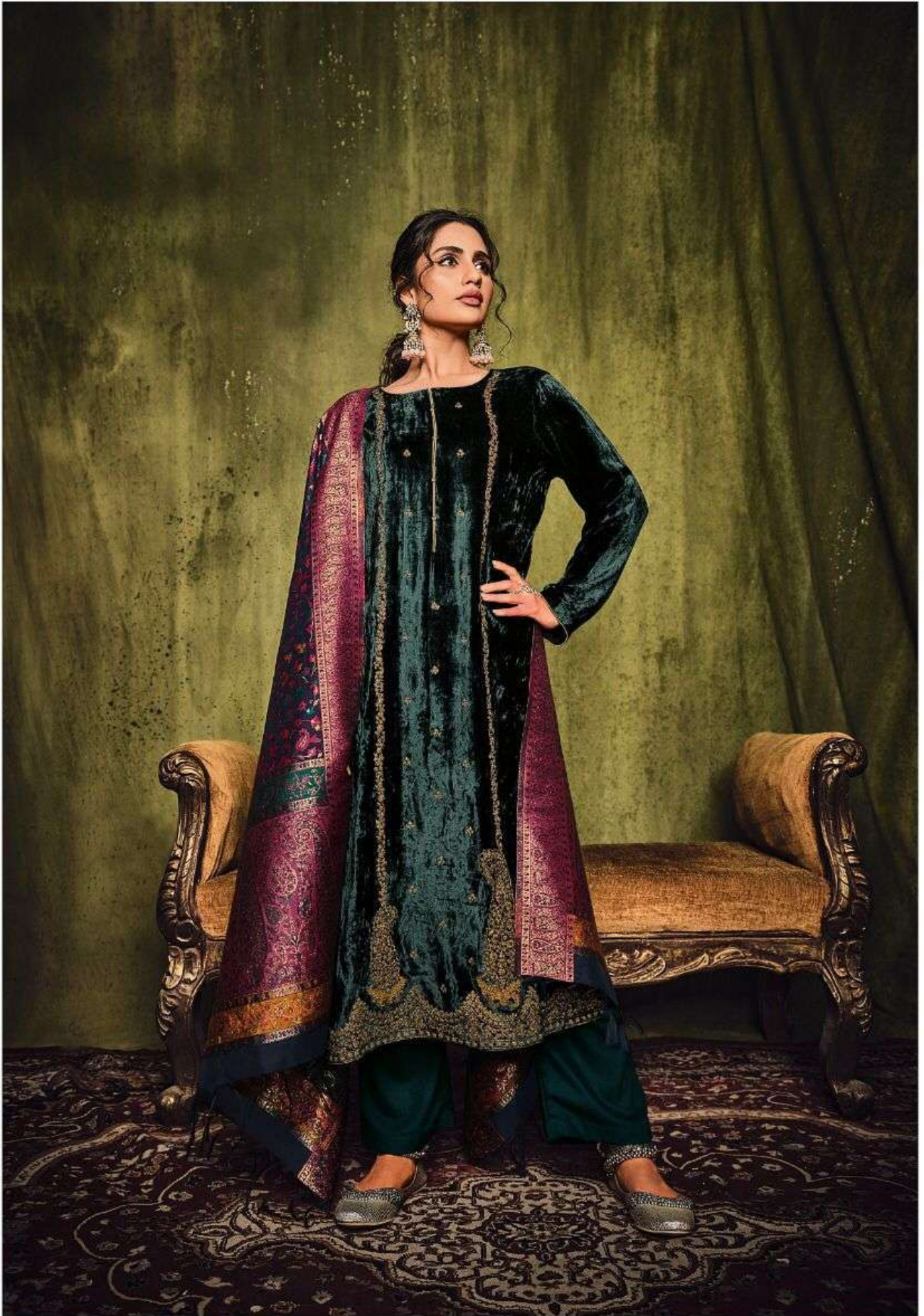
DESIGN	PRICE	DESCRIPTION
1401-A	2950	•TOP• PURE VELVET WITH EMBROIDERY
1401-B	2950	•BOTTOM• PASHMINA SOLID
1401-C	2950	•DUPATTA• KAANI SHAWL WOVEN

TOTAL AMOUNT : 8,850/-+GST

TOTAL PIECES : 3

FROM VARSHA FASHION

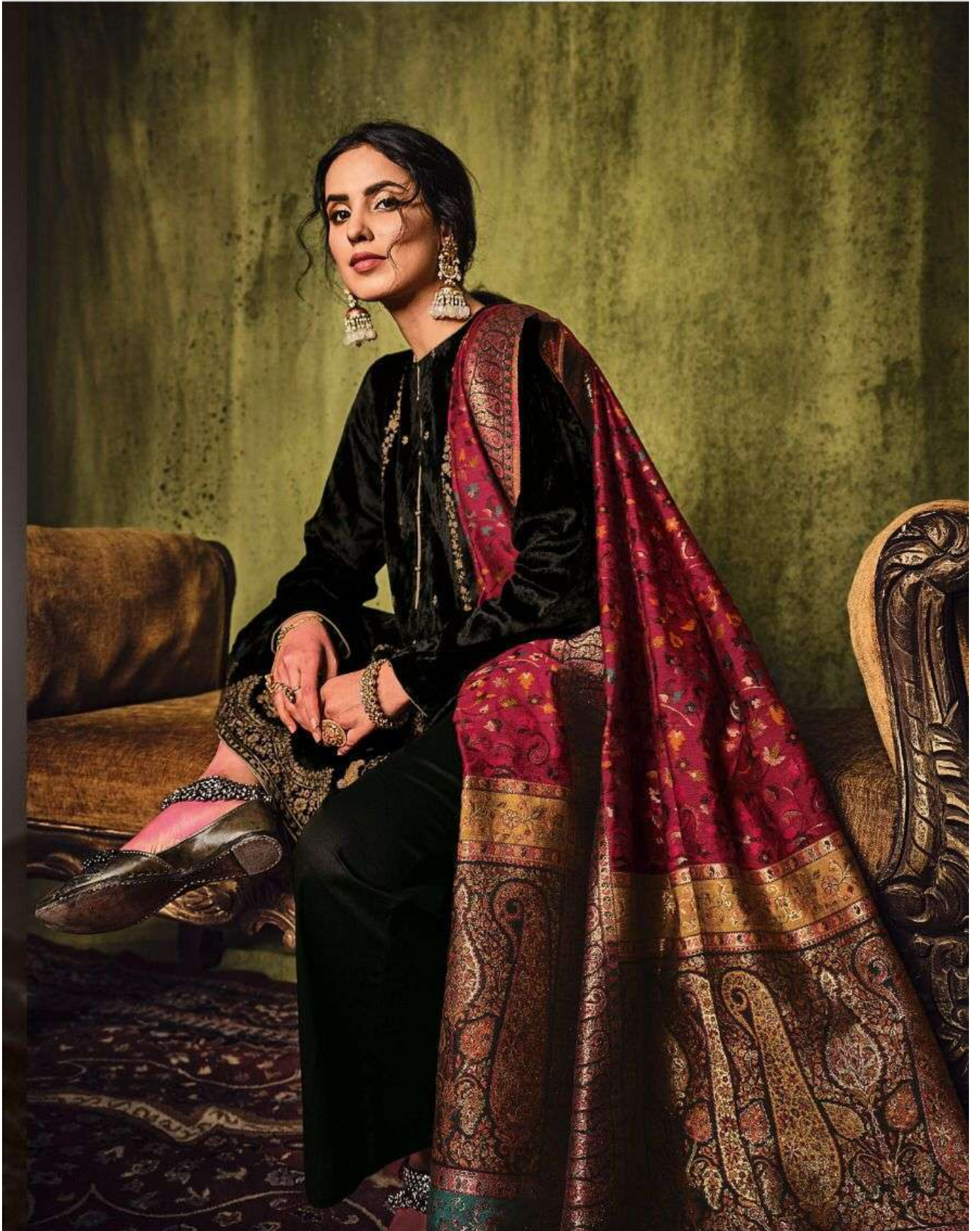




1401-C



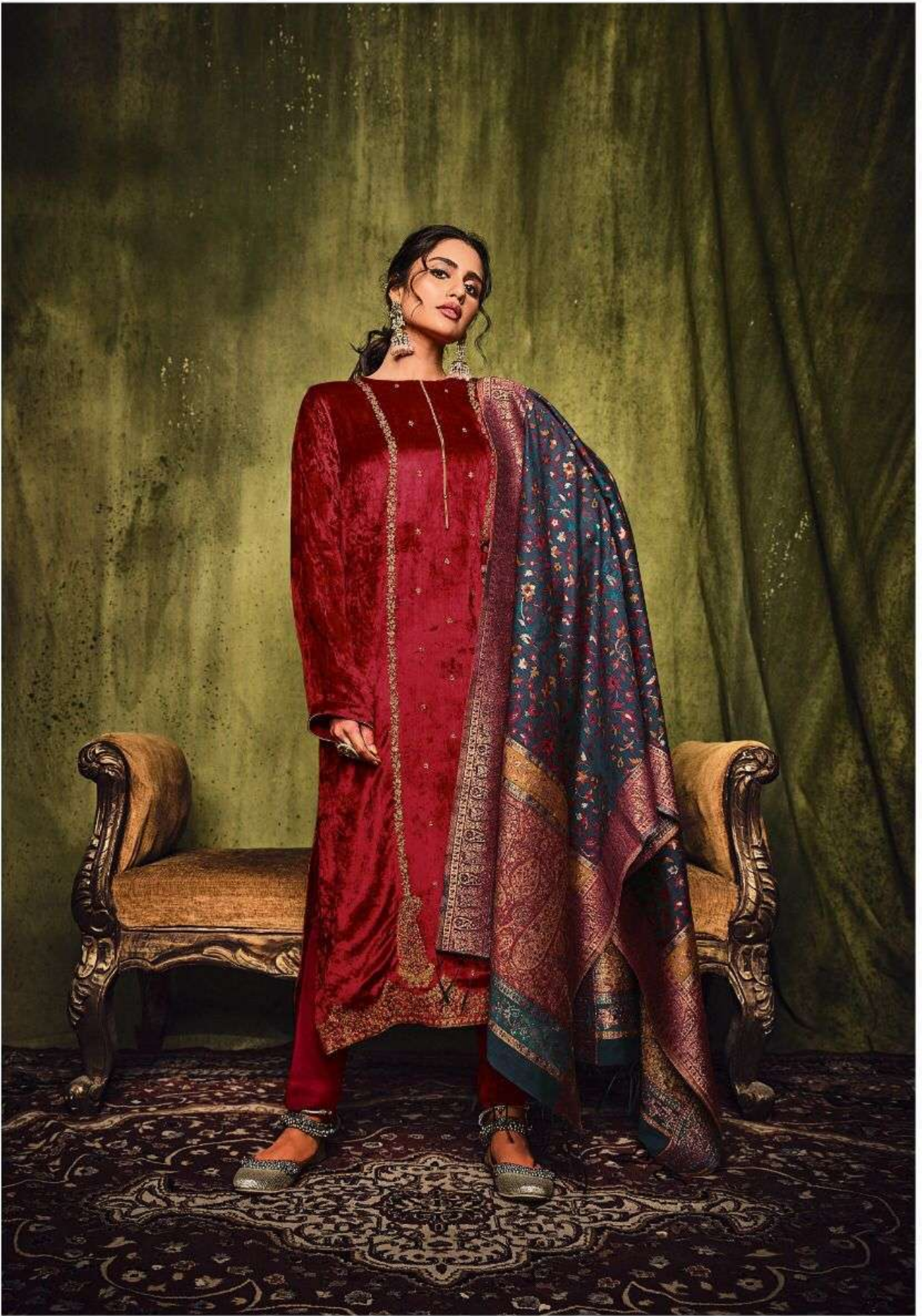






1401-B





1401-A





VARSHA

Kaira