



VARSHA

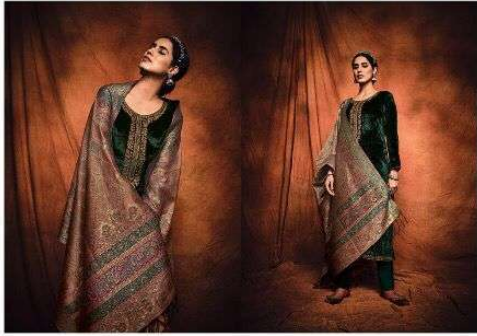
Ezra



801-A



801-B



801-C


VARSHA
Ezra



VARSHA

Ezra

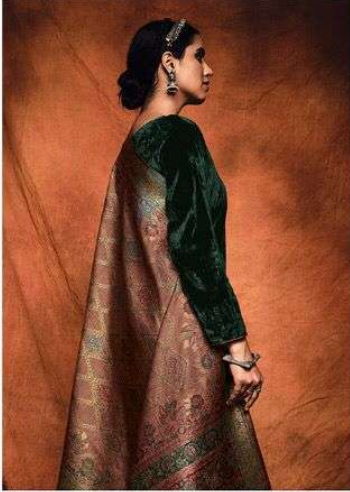


PRODUCT DETAILS

TOP : PURE VELVET WITH EMBROIDERY
BOTTOM : PASHMINA SOLID
DUPATTA : KAANI SHAWL WOVEN

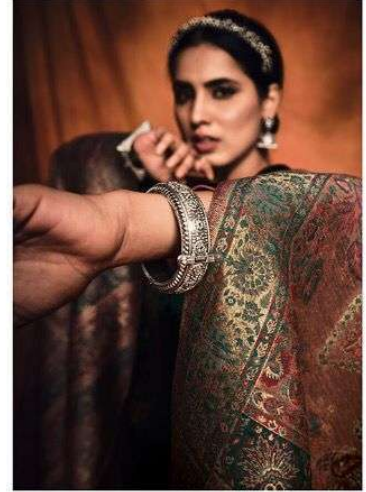
FROM VARSHA FASHION





VARSHA

Ezra



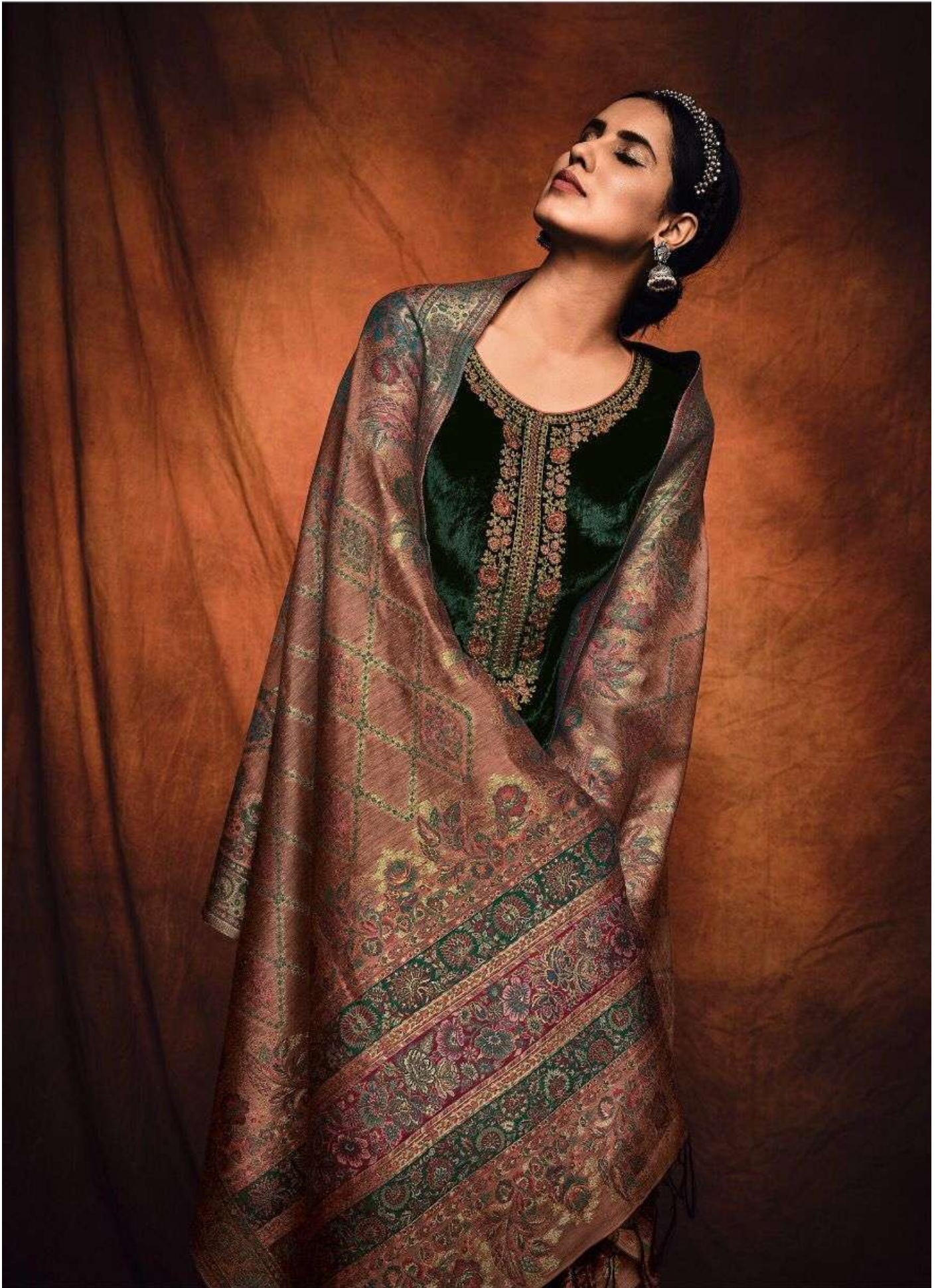
| DESIGN | PRICE | DESCRIPTION |
|--------|-------|--------------------------------------|
| 801-A | 2890 | •TOP• PURE VELVET WITH EMBROIDERY |
| 801-B | 2890 | •BOTTOM• PASHMINA SOLID |
| 801-C | 2890 | •DUPATTA• KAANI SHAWL WOVEN |

TOTAL AMOUNT : 8,670/-+GST

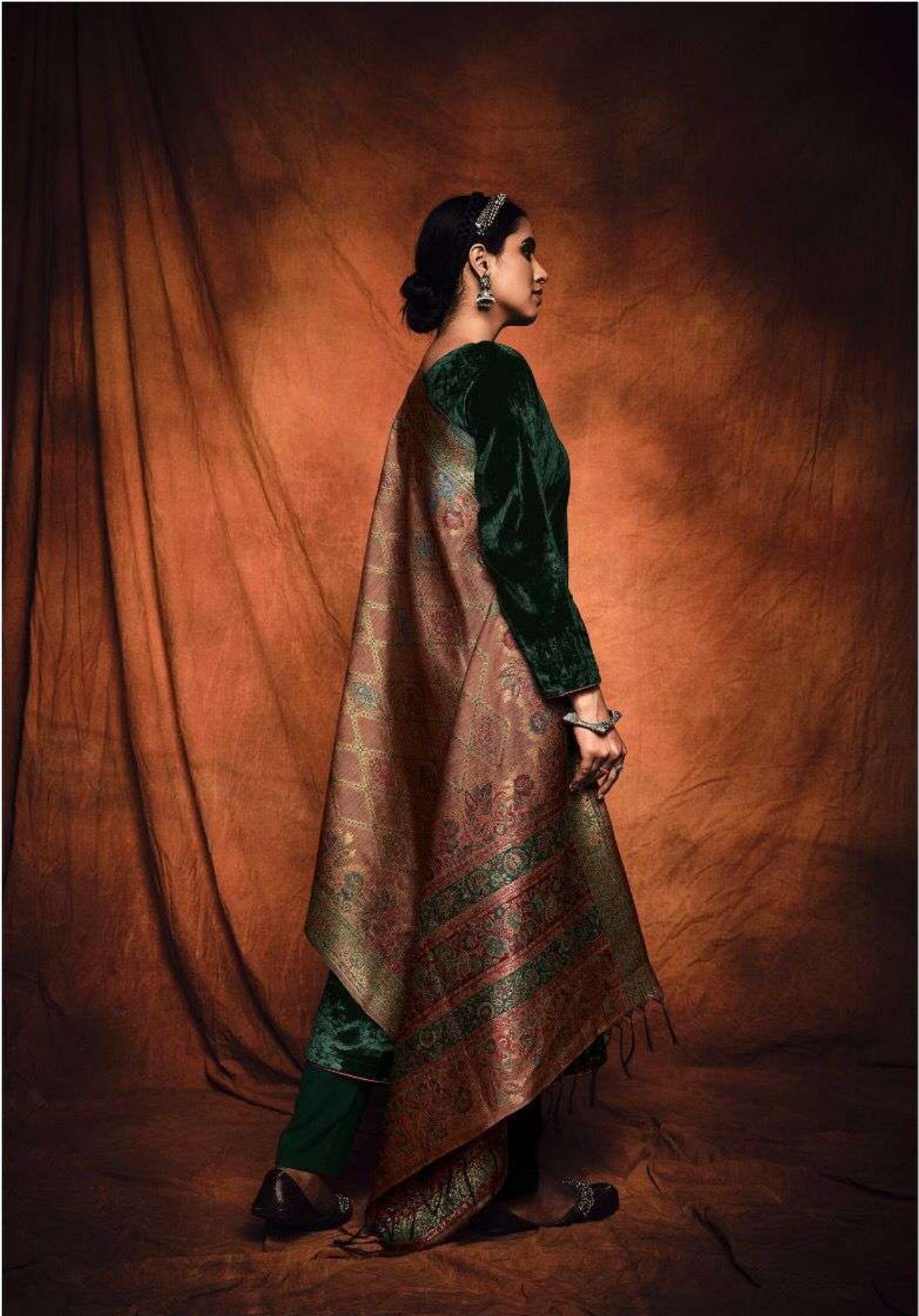
TOTAL PIECES : 3

FROM VARSHA FASHION



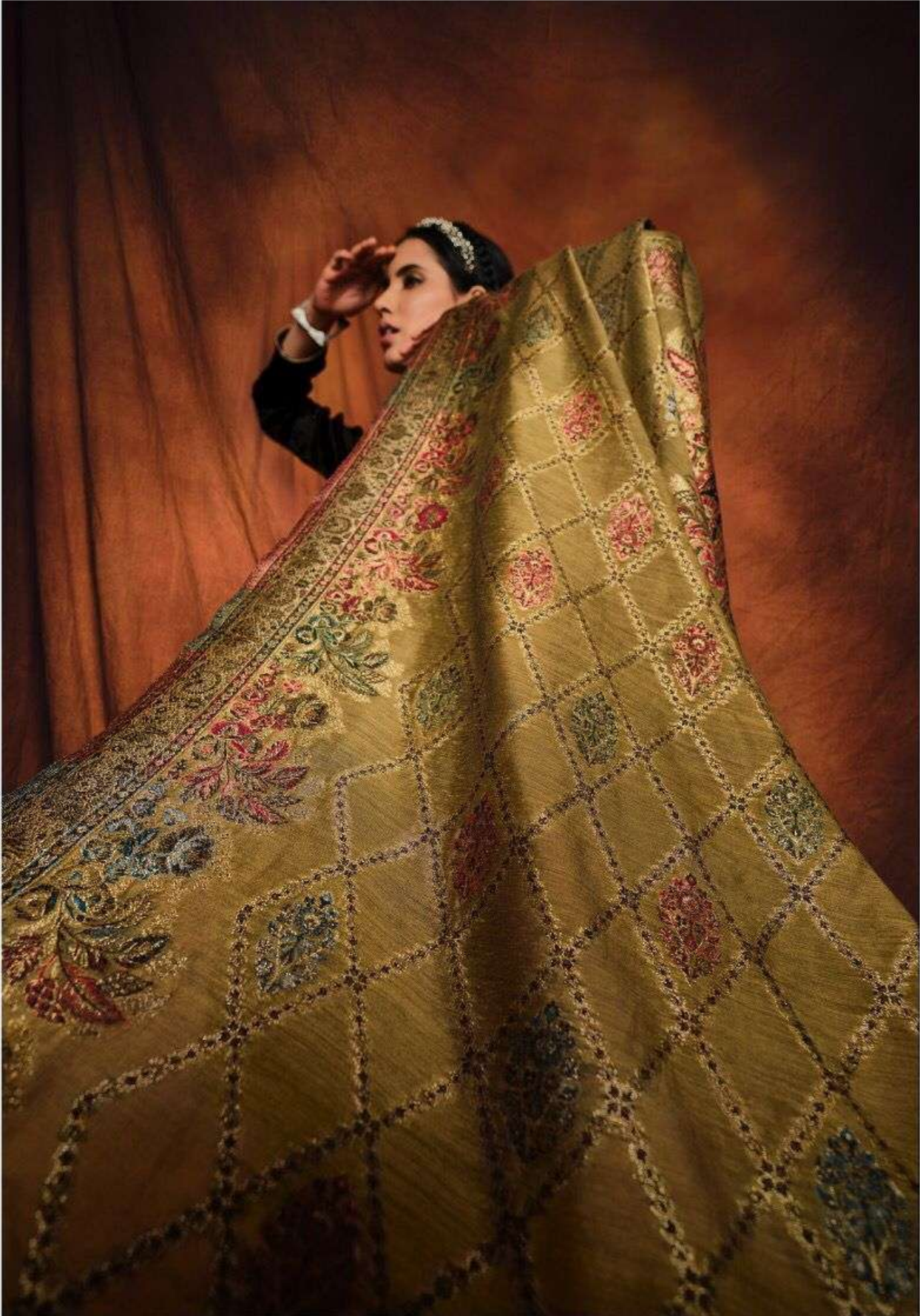














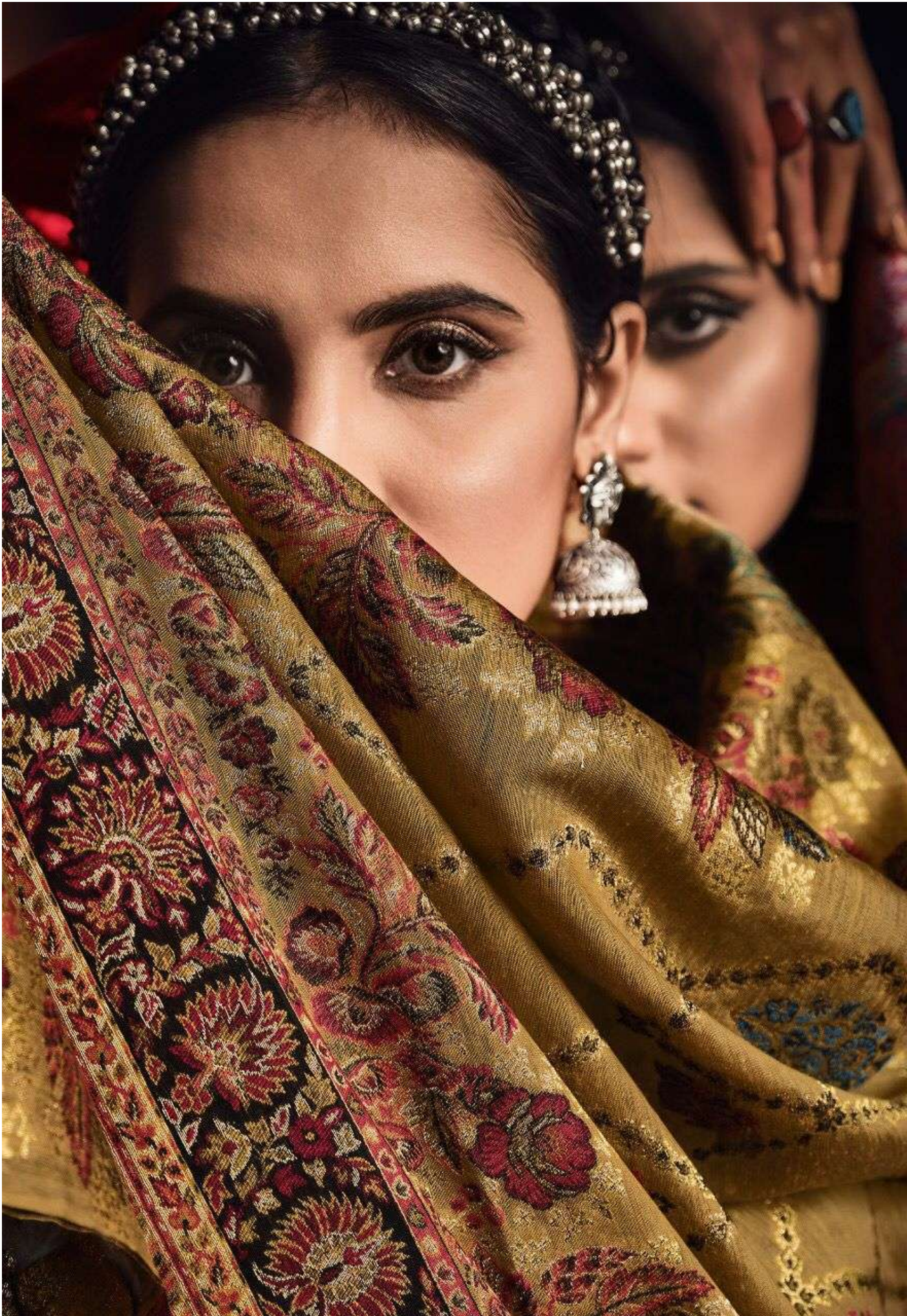
801-C







801-A





VARSHA

Ezra